

St. Anne's Anglican Church



1898 - 1998

GRESFORD - PATERSON
PARISH

FOREWORD

Hazel Hancock and Freda Collison have honoured me greatly by inviting me to write a foreword to their fine book.

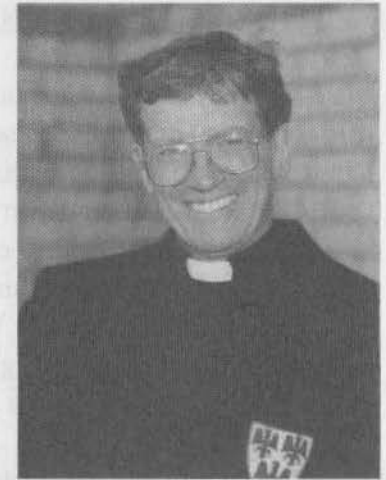
1998 is a year of great happiness for all those who have links with St Anne's Church, Gresford, as we celebrate the centenary of its present building. I am a lucky man for having this opportunity to enjoy seeing its beauty and to reflect on its many interesting and remarkable features of its history. There are many who share my joy.

Hazel and Freda have given us a book of outstanding merit. Many of the points of interest in St Anne's colourful story which have inspired and delighted me are faithfully recorded here. I promise you a feast for the eye and the mind as you turn the pages.

We are extremely fortunate to have two such skilful, enthusiastic, well informed and dedicated local historians as Hazel and Freda, both of them residents of long standing in Gresford and its environs. You will be amazed at the breadth and depth of their interests and their ability to collect and record the unusual anecdote and the fascinating detail. Their word is enhanced by superb photographs and illustrations.

St Anne's has been and still is a home and a focus for many people, near and far. Its lay people and its clergy have a fine record of worship and service, of fellowship and hospitable welcome, and of participation and constructive engagement in the life of its community. Many have found God in its life or work. This excellent presentation will give light and life to our celebrations, and inspire us to "accept with joy the challenge of tomorrows day".

GEORGE GARNSEY, Rector
Parish of Gresford-Paterson



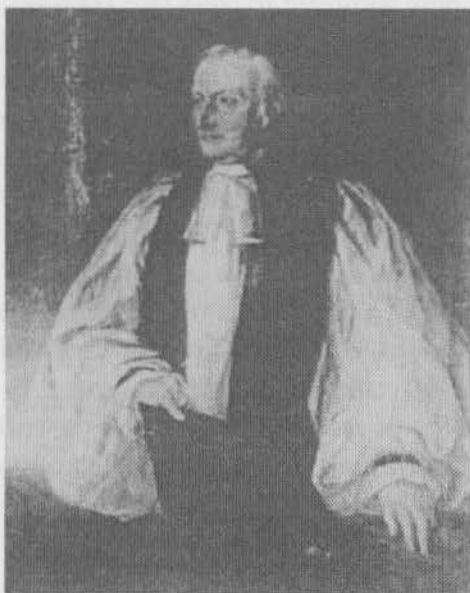
THE RIGHT WILLIAM GRANT BROUGHTON

It is a privilege to have had within the Parish a close link with the life and work of the first and only "BISHOP of AUSTRALIA" the Right Reverend William Grant Broughton.

A shipboard romance on the "CAMDEN" travelling to Australia in 1836 started a chain of events which led to the construction of three churches in the Gresford/Paterson Parish.

A fellow passenger was William Barker Boydell coming to New South Wales to take over a grant of land about six miles north along the Allyn River next to his brother, Charles' grant "Camyr Allyn" Gresford.

William and Mary Phoebe, the Bishop's daughter fell in, love.... Because the Bishop was familiar with the area where William was going he didn't think it would be a suitable place for his daughter to reside as there was no church where she could worship; However, William promised to build a church on his land for his future wife and family, his workers and their families, as well as those on the northern end of his brother's property.



Bishop William Grant Broughton, the first and only 'Bishop of Australia', who played such an important role in the founding of several churches in this parish.

PARISH HISTORY

During a recent search made at the Register General's Department to ascertain certain particulars of Glebe lands attached to St Anne's, Gresford, the following historical note was revealed:-

"An area of 181.5 acres in this locality was transferred by George Townshend to the Bishop of Australia on 25th August, 1841".

from Parish Messenger, July, 1955. Rev. B.E. Geary

ST. ANNE'S CHURCH OF ENGLAND, GRESFORD

Before St Anne's Church was begun the settlers and their workmen would ride to Paterson to a church service held by visiting clergymen, Rev. J. Woods, and Rev. J. Rusden.

On 2nd October, 1839 Rev. J. J. Smith arrived to live and commence his ministry at Paterson. St Paul's Church of England was begun at this time. Bishop Broughton made frequent visits to the Paterson/Gresford district during Rev. J. J. Smith's incumbency to inspect the Caergwrle and St Paul's churches which were under construction.

Whilst on a visit to the Gresford district a service was held in a building designed as a store on 26th June, 1843. (P.M. MARCH, 1958 Rev. B. Geary). The Bishop urged the 128 people who attended that service to build a church.

In 1841 George and Elizabeth Townshend of Trevallyn conveyed 181.5 acres of land to Bishop Broughton for the price of 10/-.

In his journal of 22nd June, 1843, he wrote that he had fixed on a site for a church and Burial Ground. The following day, 23rd June, 1843, he attended a meeting in Gresford to consult on the erection of a church. The decision was made to locate Gresford's first church on the very site where the brick church is today.

On 26th June, 1843 arrangements were made for the laying of the foundation stone of the first church, but because objections were raised as to the security of the land title, the ceremony did not proceed. However Gresford still continued to have church services.. (Maitland Mercury 18th October 1854.)

positively without reserve.

M/M Terms cash. 4925.
18-10-1854
Extensive sale of Farms on the Allyn River and the town of Gresford, the Post Office of the district, (in three lots) situated on the Paterson River.

Swes and Lambs, Rams, 150 head of Cattle.

Working Bullocks and Gear, Dray, Saddle, and Straught Horses.

Flour, Maize, Bran, Tobacco, in keg or leaf, &c., &c., &c.

MR. A. DOBBS has received instructions from C. A. B. J. H. Esq., to sell by auction, at Camyrallyn, Allyn River, on Wednesday, the 8th day of November, at Eleven o'clock precisely.

IN THREE LOTS.

Township of Gresford—the Post Office of the district, on the Paterson River.

Lot 1.—To consist of about 50 acres of land of good quality, about 12 of which are cleared, and fenced; the improvements thereon comprise a building measuring 59 feet long by 43 feet wide; is at present occupied as a Church and School Master's residence, as well as the Post Office, has a verandah on both fronts, and 7 apartments; it is rented at present for £20 per annum; though worth considerably more, and the lease expires 30th June, 185—. A stable 24 feet by 24 feet is included with the building. On the same lot is a weather boarded cottage, 21 feet by 14½ feet, of 2 rooms, occupied at present by the tenant of the ground, who pays a rental of £10, now worth from £15 to £20. His occupancy expires 28th February, 1855.

Maitland Mercury 18-10-1854

(Church services must have been held here before this date.)

THE FIRST (SLAB) CHURCH OF ENGLAND

In the P.M. September, 1955 Rev. B. Geary, ...The following reference was made re. the early slab church. I quote:...

"Unfortunately, records relating to the early slab church at Gresford are missing."

In the booklet "The Parish Of Gresford/Paterson Commemorative Edition, November 1995" Rev. George Garnsey wrote.....I quote..

"The first church in Gresford was built between 1856-1858."

It was a slab building with a shingle roof. Reports say it was burned down. This does not appear to be true. Read article taken from Maitland Mercury, 12th November, 1898 for explanation. (Article Printed Later).

Extracts taken from George Muddle Diary (Gresford Historical Society) are printed here.

ENTRIES FROM GEORGE MUDDLE DIARY RE: TIMBER FOR FIRST GRESFORD CHURCH.

Mon. 28th January, 1856. To draw logs up to pit at the Sheepstation Creek to cut stuff for the church at Gresford. (page 101)

Mon. 28th April, 1856. To draw logs for the Church at Gresford. (page 103)

Sat. 3rd May, 1856. To draw logs for the Sawyers and brought a load sawed stuff for the church at Gresford. (page 104)

Mon. 12th May, 1856. To the Pass for a load of slabs for the Church at Gresford. (page 104)

Mon. 16th June, 1856. Went for a load of sawed stuff for the Church at Gresford. (page 105)

Tues. 4th July, 1856. To draw some logs for the Sawyers and took a load stuff over to the Church at Gresford and drew some sleepers for Church.. (page 105)

Tues. 29th July, 1856. To bring a load of sawed stuff to the Church at Gresford. (page 106)

Mon. 11th August, 1856. To help the Blacksmith to make two iron tie beams for the Church at Gresford.

Nov. 23rd, 1856. To Gresford Church and their child, Lucy christened. (page 109)

THE RECTOR'S LETTER.

My Dear Parishioners.—I want to make special mention this month of the Golden Jubilee of the Opening of St. Anne's Church, Gresford. I am a little late with the news but it was not till a few weeks ago that I unearthed the information from a letter to the architect, Mr. John C. Luscombe, of Muswellbrook. Mention is made in that letter from the building committee that Mr. Luscombe had been publicly thanked for his honorary services at the opening of the new Church on 9th November, 1898.

I propose that we should all offer our solemn thanksgivings to God for our beautiful parish Church at the Patronal Festival on St. Anne's Day, 26th July, at 7.30 p.m. The special preacher at that service will be Canon C. W. Nicholls, who will afterwards in the Parish Hall screen some religious films if electricity restrictions will then permit.

No doubt you will be interested to hear some of the facts connected with the building of the new Church. According to the Parochial Council Minute Book, the matter was first discussed in a formal way in the year 1896 when it was resolved to make some preliminary enquiries about the amount of material that would be required, and a number of subscriptions were promised. This was during the incumbency of the Rev. P. S. Luscombe. It was not, however, till the next year that a definite move was made towards the erection of the building. On Friday night, May 14th, 1897, the Reverend Mr. Luscombe presided over a meeting of parishioners at which the following resolution was passed: That in the opinion of this meeting it is desirable to erect a new church on the site of the old one, and that a subscription list be opened at once, such church to take the form of a Jubilee Memorial. I presume that the Jubilee referred to is the Diamond Jubilee of Queen Victoria. The church then was planned by loyal subjects and in remembrance of the sixty years of beneficence which marked the reign of good Queen Victoria. It is recorded that at that meeting in May, 1897, the sum of £190 was promised which included subscriptions promised at a former date. Of course the meeting decided to ask the ladies to assist in the collecting. At that same meeting the Building Committee was appointed: The Rev. P. S. Luscombe, Mr. J. W. Boydell, Mr. G. Grey, Mr. W. J. Parker (Wardens), and Messrs. A. Ebbeck, W. Reynolds, and H. Crew. You may be interested to know that the Parochial Councillors at the time of the building were the Wardens mentioned above and Messrs. G. Glennie (Treasurer), A. Lindeman, F. Brooker, J. Lawrence, C. Drinkwater, H. Crew, R. W. Hipwell, G. Harris. Mr. J. Turnock, an auditor, evidently came on to the building committee at a later date and took an active part in all the transactions.

Although the contract of Mr. W. Barrett for a brick church was eventually accepted it was not before the proposal of Mr. Lindeman for a stone church had been thoroughly explored. Difficulties of labour, time and expense finally forced the committee into the decision to build in brick. Materials from the old slab church were auctioned in February and contracts for the making of bricks entered into immediately. In the meantime services were held in the School of Arts and the furniture stored in the old Church School House.

At this stage, on 14th April, Mr. Luscombe resigned the parish and for some months the parish was visited by the Reverend R. M. Walker.

Soon after the appointment of the Rev. Stephen Taylor, the new Church was opened and dedicated by the Right Reverend George Stanton, Third Bishop of Newcastle. A pencilled note in the Baptism Register states that the first child baptised in the new Church was the Rector's son, Hugh Stevenson Taylor.

The cost of the building appears to have been about £700 without the architect's fee. There is a note in the minutes of a Churchwardens' meeting of 10th October, 1905, that the Church was then free from debt. This was due to the splendid result of a sale of work (£138/9/10). Mr. Turnock moved and Mr. Boydell seconded that this meeting is deeply grateful to all the ladies and workers who aided in the late bazaar. The chairman, the Reverend G. M. Brown, expressed his gratitude to all concerned.

There is the record of the earnest efforts of the committee to have a sound as well as a beautiful church. This necessitated deeper foundations, a matter upon which Mr. Job Lawrence can instruct us. Several alterations were made to the original plan as the work proceeded, e.g. the raising of the walls of the porch to a higher level. We are very grateful for all that was done and very proud of the Church.

In conclusion, may I say that I would be most grateful for any information anyone can give me of the history of the parish, and I am most grateful to those who have helped me to gain the information which I already possess.—Your sincere Rector,

F. W. RUSH.

When David Wells interviewed Mr Charles Herbert (who lived to 102 years) some years ago, about the brick church at Gresford, he learned that Mr Job Lawrence's assistant when digging the foundation for this church in 1897, was "Daddy" Reid, the last surviving ex-convict in the area.

CONSECRATION OF ST ANNE'S CHURCH, GRESFORD.

MAITLAND MERCURY, NOVEMBER 12TH, 1898.

Consecration of St. Anne's Church, Gresford.

Wednesday (Prince of Wales' Birthday) will long be remembered as a red letter day in the annals of the Gresford district, it being the occasion when the interesting ceremony of the consecration of the new church of St. Anne's was performed by his Lordship the Bishop of Newcastle.

The new building is a neat brick structure in the early Gothic style, length 45ft., width 25ft., height of walls 11ft., capable of accommodating 200 worshippers. The chancel is approached by a step from the main floor, and is 16ft. by 14ft. and contains choir seats, etc. The Communion rails are raised by another step, and the Holy Table is on a raised dais. The east window is a stained triplet one, and is in memory of Senior Francis Marano. It is exceedingly handsome. The other windows, twelve in all, are of ground cathedral glass. The church is built on the site upon which the wooden church, lately removed, has stood for 40 years, and stands in the centre of the picturesque little cemetery, in which rest the remains of many of the pioneers of the district. The architect is Mr. J. C. Luscombe, of Muswellbrook. His brother the Rev. P. S. Luscombe was the incumbent of the parish at the time the movement for the erection of the new church was started. He took great interest in its erection, as shown by a contribution of £50 towards the new building. A pleasing feature in connection with the church is that it is opened practically free from debt. An interesting fact in connection with the new building is that in the year 1845, the first Bishop of Australia, the Right Rev. William Grant Broughton, D.D., visited Gresford to lay the foundation stone of St. Anne's church. But upon his arrival some difficulty arose as to securing the site, and the ceremony was not proceeded with, the stone as prepared being left upon the ground. Some short time afterwards the old wooden church was erected upon the site, and over the foundation stone, which has laid all that time under its floor. The old wooden building has done duty for about half a century, and when demolished to make room for the new structure, the old stone was discovered under the floor. The stone was won but it has been furnished with a marble face and has been used as the foundation stone for the new building. The name of Bishop Broughton with the year 1845, being inscribed upon it in association with that of Dr. Stanton, and the record of its laying in the present year 1898.

There was a large gathering from all parts of the district at the consecration, a great number of whom could not find accommodation inside. The clergy present were his Lordship the Right Rev. Dr. Stanton; the Rev. Stephen Taylor, B.A., Rector of the parish; the Rev. John Shaw, Paterson; the Rev. O. E. Hill, Dungog; and the Rev. E. Noake, B.A., of Sydney. The usual consecration ceremony was used. The prayers were said by the Revs. Messrs. Taylor and Hill, and the lesson read by the Rev. John Shaw. The anthem sung was: "Oh! how amiable are thy dwellings." In the course of the service the Bishop in company with the minister visited the font, lectern, organ, pulpit, and Holy table, and offered collects asking God's blessing on the ministrations connected with each. The sermon at the suggestion of the Bishop was divided among the visiting ministers, each one in turn giving a short address, a verse of a hymn being sung after each. The offertory amounted to about £30.

A substantial luncheon was provided by the residents of Gresford, in the School of Arts. It was served by the ladies whom the Bishop humorously designated Ladies-in-Waiting. The large numbers present made four or five relays necessary before all were accommodated.

At the close of the lunch an open air meeting was held near the church presided over by Mr. Jas. W. Boydell (the synod representative, senior church warden, lay reader, and Secretary). Among others present were Mr. R. B. Boydell, and Mr. H. H. Brown, ex-M.P. Addresses were given by the Treasurer and members of the Building Committee, supplying a statement of the accounts and of the progress of the work. It was stated as a pleasing fact that throughout the whole undertaking no dispute of any kind had arisen with architect, contractor, or had contributed in any way to bring about such a satisfactory result.

The gathering apart from its main object was the means of bringing together old friends from distant parts of the district in social intercourse. We may mention that the new rector of the parish the Rev. Stephen Taylor, B.A., who is a Cambridge man, and acted as principal at Moore College for twelve months after his arrival in the colony, is becoming very popular among his parishioners. The proceedings closed with the singing of "God Save the Queen," and as it was the anniversary of the birthday of the heir to the throne, with cheers for the Prince of Wales.

THE FOUNDATION STONE

A question often put to the hosts of the tourist bus load of visitors who come to St Anne's Church is "WHY ARE THERE TWO BISHOPS' NAMES ON THE FOUNDATION STONE AND THE DATES SO FAR APART?"

Your answer was given in the Mercury Article, 12th November, 1898.

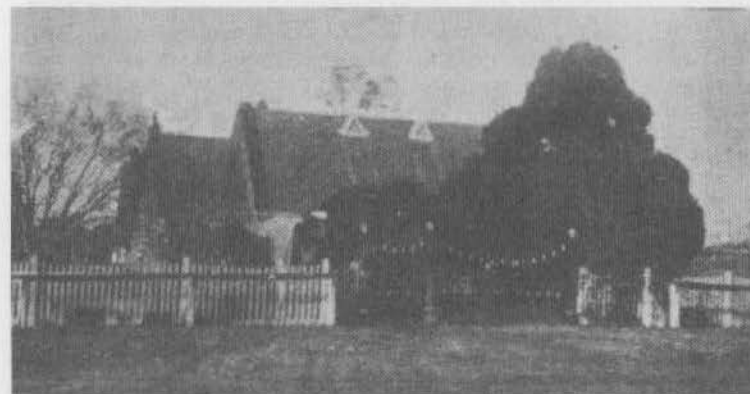


THE GOLDEN JUBILEE OF THE BRICK CHURCH OF ST ANNE'S, GRESFORD

During 1948(9) Reverend F. W. Rush planned a Golden Jubilee Service for the Church. He had spent many hours going through old church records (now in safe keeping in the Archives at Newcastle University). To him we owe a debt of gratitude for much of the church's history from (1898-1948(9)).

This is God's Court, the place of peace and rest;
The poor with Solomon's own wealth and blest.
The Son of David, God and Man, doth come
To knit us to Him in this Mother-home.
This is the ark of Noe; safe within,
Believers ride the flood and harbour win.
Lo, this is Jacob's ladder; here 'tis given
By faith and godly life to climb to heaven.

-747, Hymns A. & M.



S. ANNE'S CHURCH, GRESFORD
Dedicated 9th November, 1898.

THE RECTOR'S LETTER.

(Rev. F. W. Rush Sept. 1949)

My dear Parishioners, - The picture of S. Anne's Church appearing on the front page of this "Messenger" is by courtesy of Mr. Clarrie Walker. He came with me one morning recently at something after eight o'clock to get some photographs of the Church. They were all good but the one I have published gives the fullest impression of the Church in its garden setting.

I was disappointed not to be able to have the Golden Jubilee Service at S. Anne's on 26th July. The weather, of course, was much too wet. I shall try to arrange with Canon Nicholls to visit us on 9th November next to mark the 51st Anniversary of the Church's dedication. The new Church was dedicated on Wednesday, 9th November, 1898.

P.M. October, 1949.

51st Anniversary of the Dedication of the New Church will be on Wednesday, 9th November. Thanksgiving Service will be at 7.30p.m. It is hoped that Canon Nicholls will be able to preach at this service.

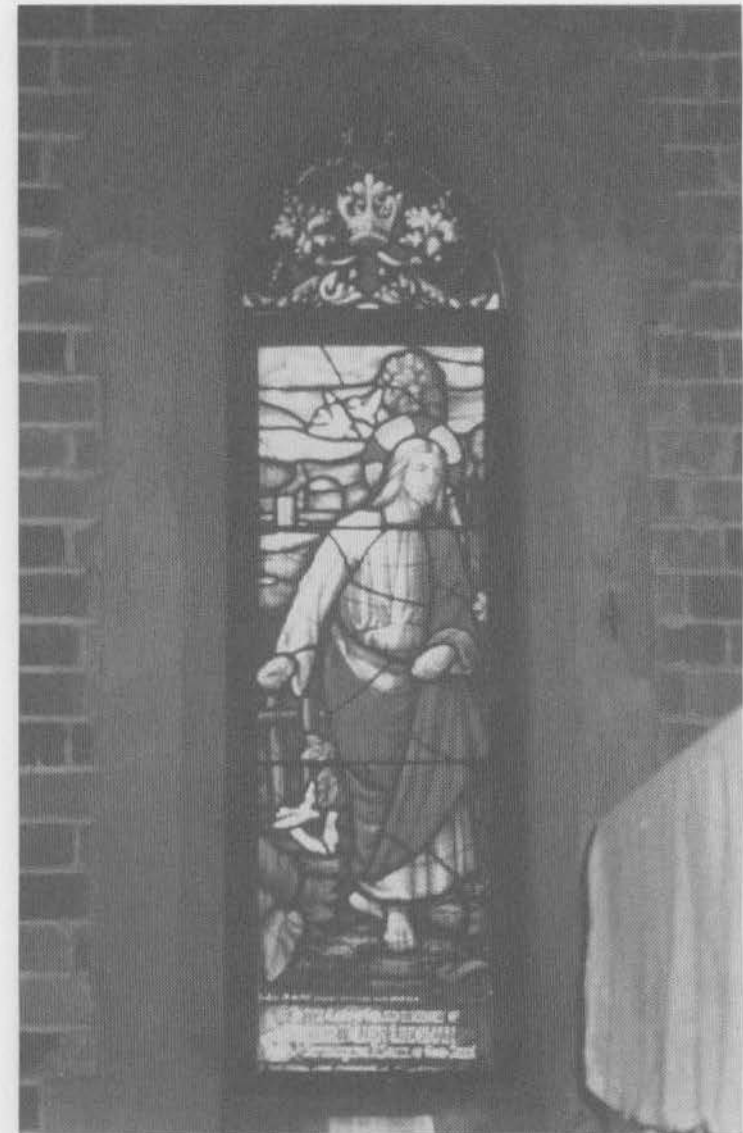
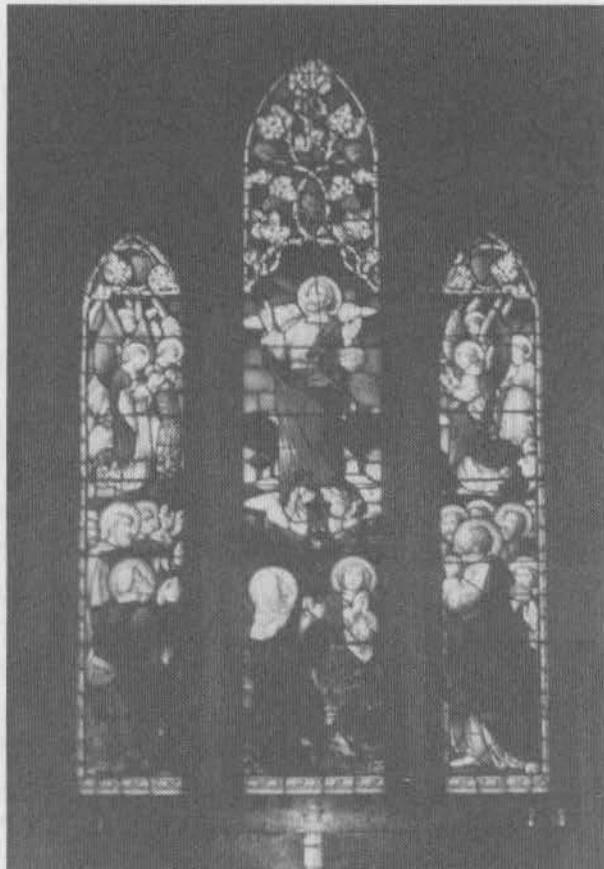
MEMORIAL WINDOWS

When the St Anne's Church was consecrated in 1898 there was only one stained glass window. It was in the east wall.

To the Glory of God
and in memory of
FRANCISCO DEL MARONEO.

A benefactor of this Church.
Native of Lago Di Como, Italy
Who died September, 1882.

This window was erected in March, 1899
by his Pious Bequest.

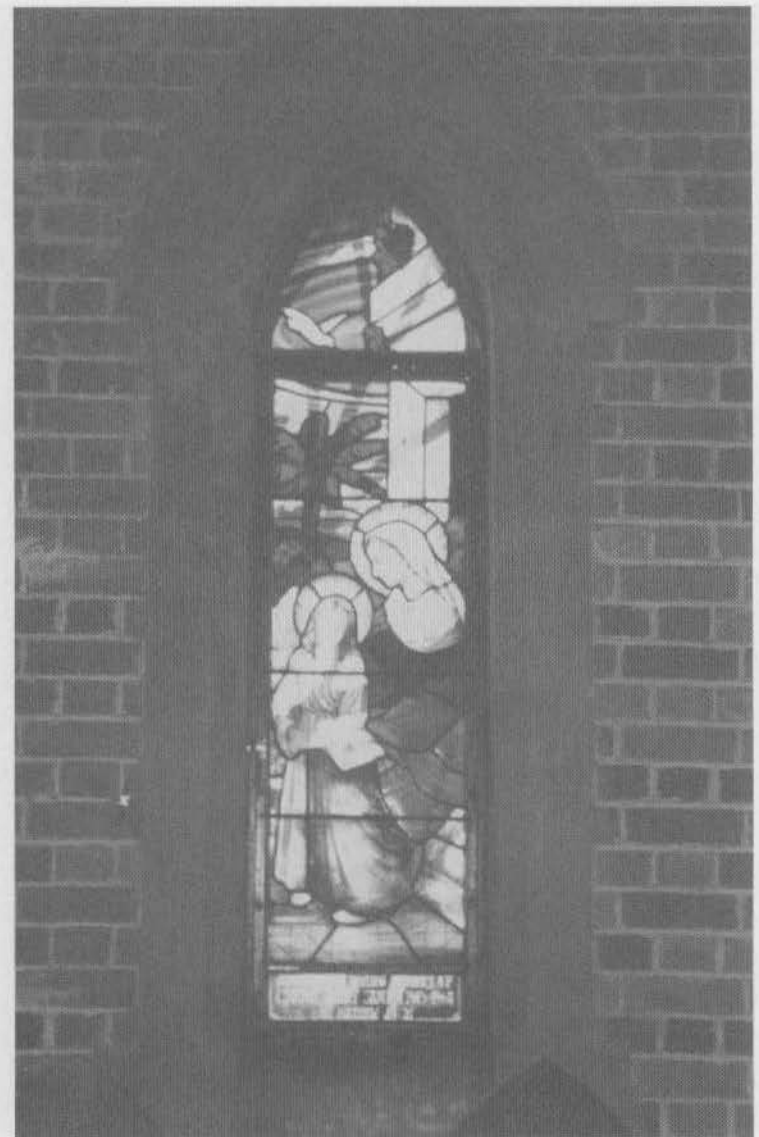


TO THE GLORY OF GOD
AND IN MEMORY OF
ARTHUR HOLDEN LINDEMAN
DIED 14 SEPT 1951
A SOWER OF GOOD SEED

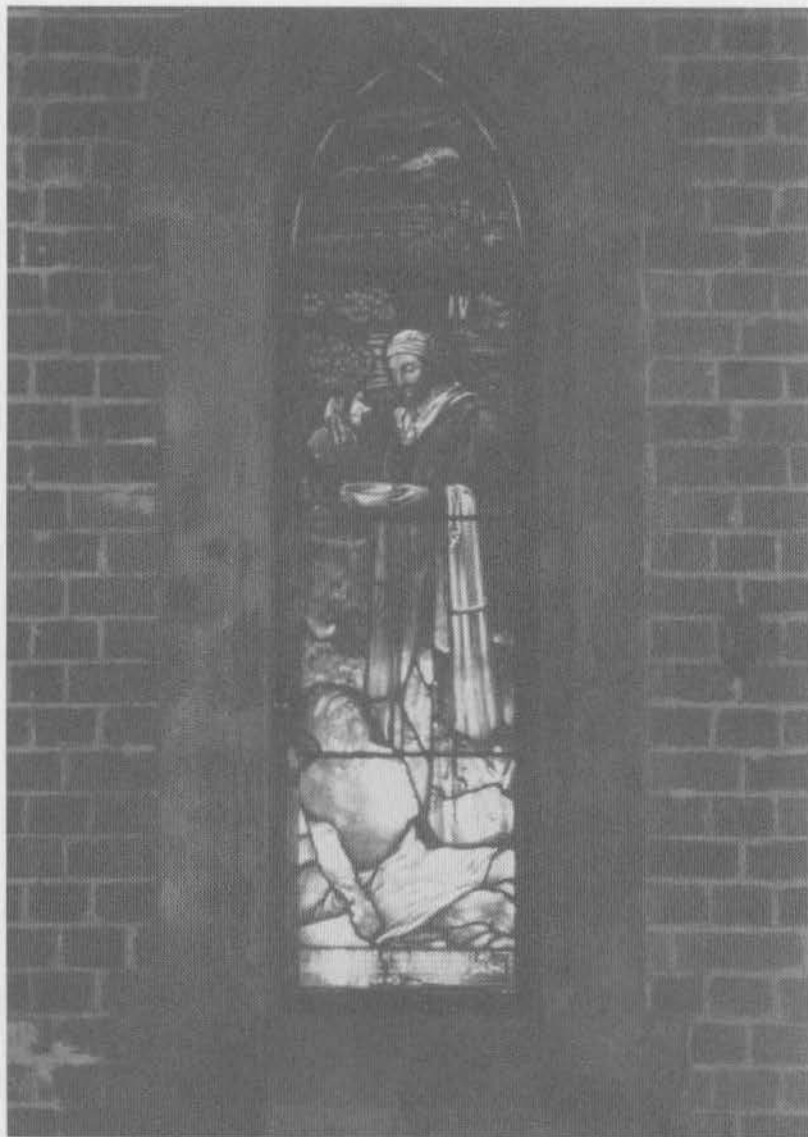
PLAQUE
AND HIS WIFE
BEATRICE LOUISE LINDEMAN
1890 - 1970



TO THE GLORY OF GOD
AND IN MEMORY OF
BERNARD EUGENE GEARY
SOMETIME THE RECTOR OF
THIS PARISH DIED 23 SEPT. 1960
"A GOOD SHEPHERD"



A.M.D.G.
IN LOVING MEMORY OF
ISAAC HENRY JAMES
1903 - 1968
ST MATHEW 25:21

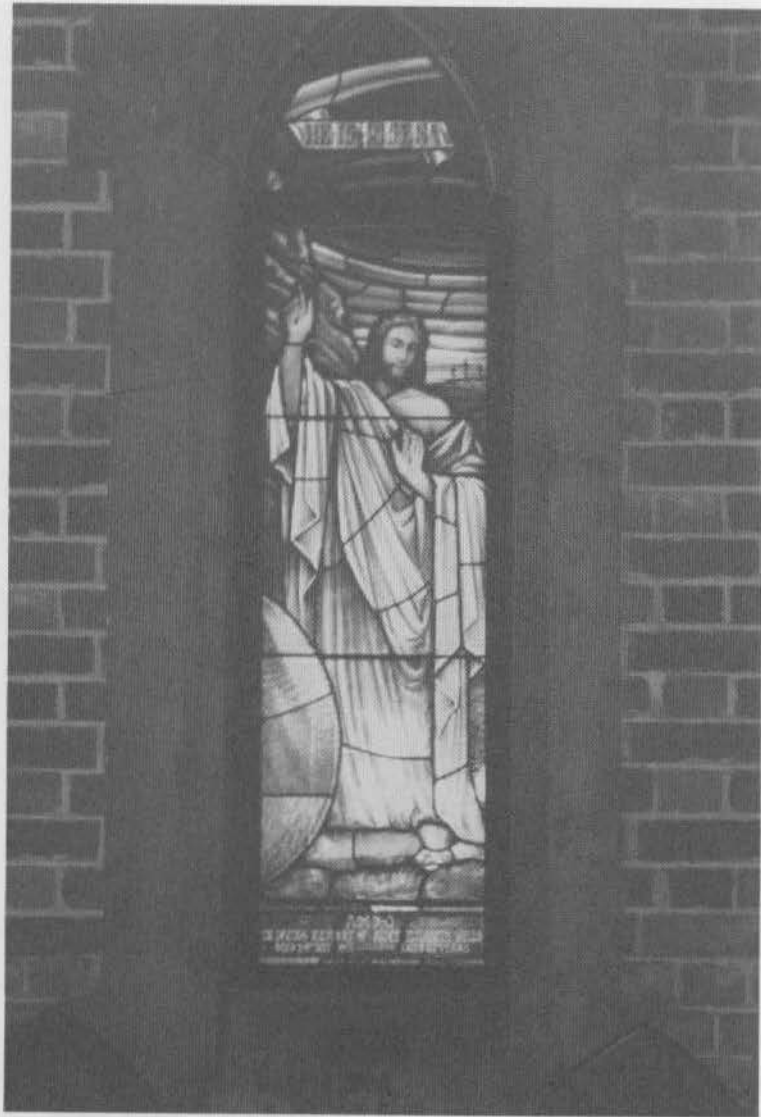


TO THE GLORY OF GOD
AND IN MEMORY OF
EDWARD BRAMHALL LINDEMAN
DIED 16 AUG. 1961
"A GOOD SAMARITAN"



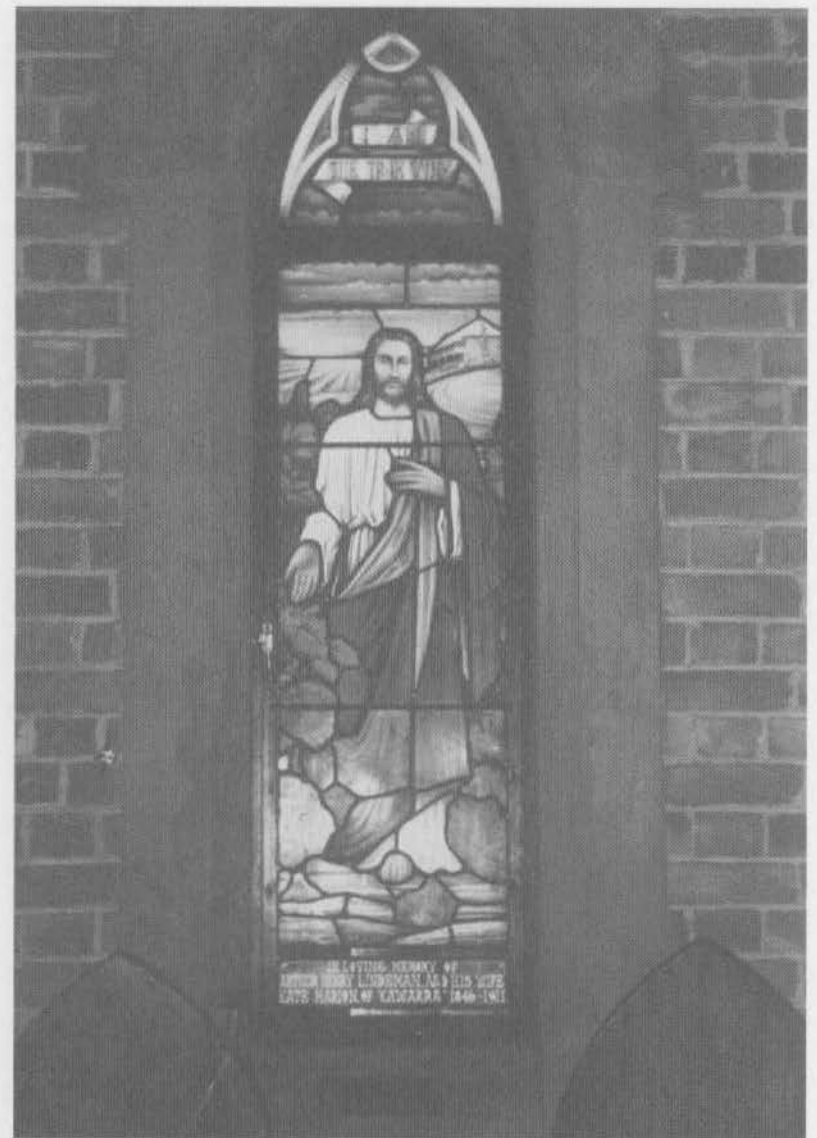
A.M.D.G.
IN LOVING MEMORY OF
LAURA BEATRICE LINDEMAN
DIED 22 SEPT. 1975
AGED 89 YEARS

PLAQUE
A.M.D.G.
IN LOVING MEMORY OF
DAVID HENRY LINDEMAN
3.4.1927 - 2.9.1990
LEST WE FORGET



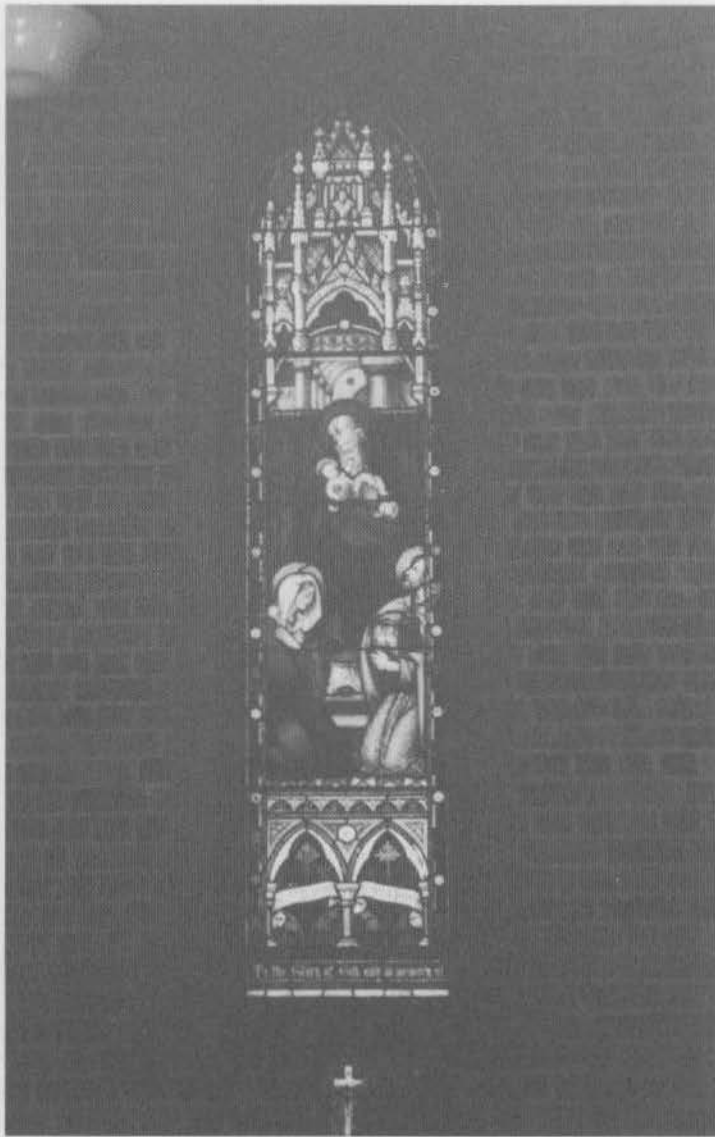
A.M.D.G.
 IN LOVING MEMORY OF
 ALICE ELIZABETH WELLS
 DIED 29 JULY 1971
 AGED 81 YEARS

PLAQUE
 A.M.D.G.
 IN LOVING MEMORY OF
 JOHN HAROLD WELLS
 DIED 29TH JANUARY 1986
 AGED 95 YEARS
 THE GIFT OF HIS FAMILY

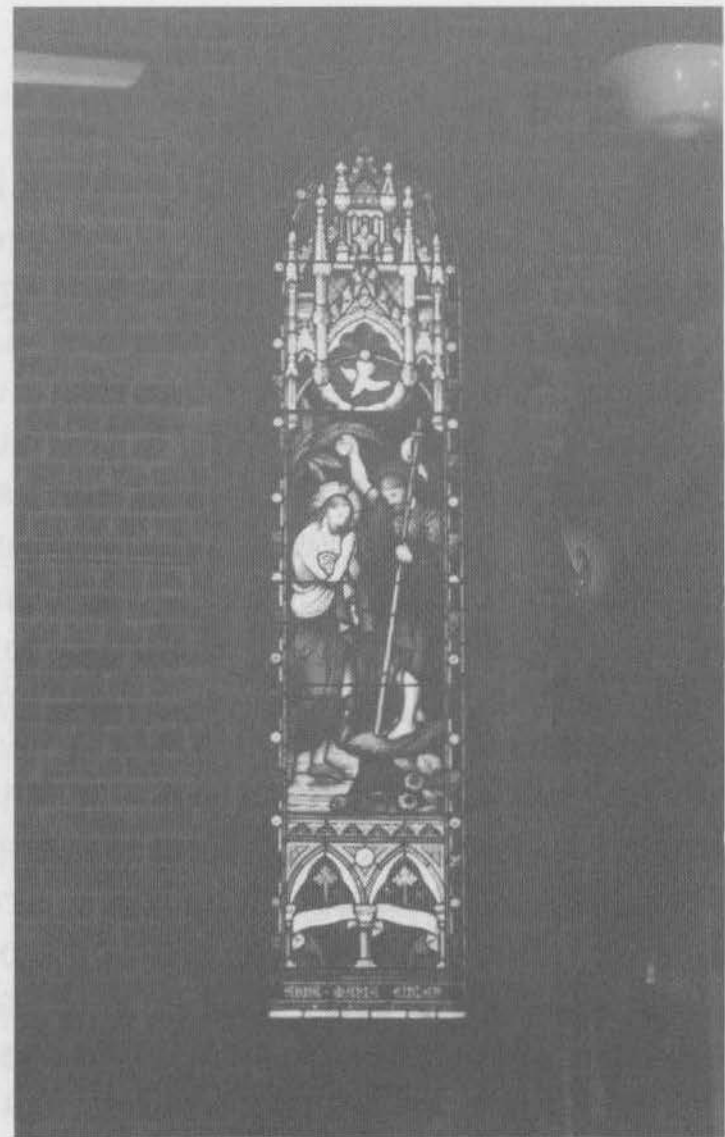


IN LOVING MEMORY OF
 ARTHUR HENRY LINDEMAN
 AND HIS WIFE
 KATE MARION OF
 "CAWARRA" 1846 - 1911

PLAQUE
 THEIR DAUGHTER
 KATE MARION LINDEMAN
 1878 - 1963



On 10th June, 1910 a special correspondent for the *Dungog Chronicle, Durham and Gloucester Advertiser* visited the Church. He mentioned three memorial windows. (see article) Can anyone confirm the article?



TO THE GLORY OF GOD
AND IN MEMORY OF
ANNA MARIA EIDLER

WEST GRESFORD.

This township lies a little over a mile from East Gresford, and here a substantial brick school building, presided over by Mr Rodgers, is situate, together with a desirable residence; good results are obtained here from the efforts of the scholars. Here also is a very handsome Church of England, built on the banks of the Paterson. The pastor of the church is Rev. Mr Brown. The eastern end thereof is relieved with a beautiful stained glass window, whilst at the western end two memorial stained windows are set in. One is to the memory of Anna Maria Eidler, the other to that of T. T. Hancock. The edifice is roomy and neatly finished. The rectory is also a goodly building with large grounds surrounding. Memorial gates are also erected to perpetuate the memory of Trooper Grey.

THE ORGAN

The beautiful pipe organ is now due for a complete overhaul. Money is being raised by the church committees. Donations to the "Organ Fund" would be gratefully accepted.

To the Glory of God
and in memory of

Edward Jones Catherine Jones
Mary Catherine Jones Louisa Jones

as directed by

Edward Jones (Jnr) who died 19th January, 1939

Plaque on end of keyboard..

The following extracts are from old Parish Messengers.

ST. ANNE'S GRESFORD

Vestry: The Vestry will meet on Friday, 1st October, at 8 p.m.

Bequest: Grateful acknowledgement is hereby made of the bequest of 1000 pound in the will of the late Mr. Edward Jones, who was at one time associated with St. Anne's and later with the church at Denman. The first call on the bequest will be the installation of a pipe-organ in memory of Mr. Jones' family.

P.M. Sept., 1948 Rev. F.W. Rush

By the will of the late Edward Jones the sum of 1000 pounds has been directed to a pipe organ to be erected in St. Anne's Church, Gresford, in memoriam of the Jones family; it is hoped if possible to have this grand gift placed in the Church as soon as possible.

With best wishes to you all, yours sincerely,

C. L. DUCK.

P.M. April, 1949.

1951 Order for Organ was made.

New Organ: Acting on behalf of the Vestry the Rector has interviewed Messrs. Whitehouse Bros. in Brisbane as to the placing of the pipe-organ in the church and has made an inspection of the work already completed on the pedal organ and manual and bellows. Little more can now be done until the metal pipes are received from the manufacturers in England. The organ casing and console will be constructed mainly of north Queensland pine naturally seasoned in the maker's shed. The date of completion may be the end of the year but will probably be in 1953.

P.M. May, 1952. Rev. F.W. Rush

I am very grateful to all those who contributed liberally towards the organ debt reduction, at the Dedication Service on Sunday February 14th. While this special collection is not sufficient to pay all of the overdue account, it will be the means of effecting a gratifying reduction. To those who have not contributed, I would say that the fund will be open for sometime and the need is urgent.

P.M. March, 1954. Rev. B. Geary

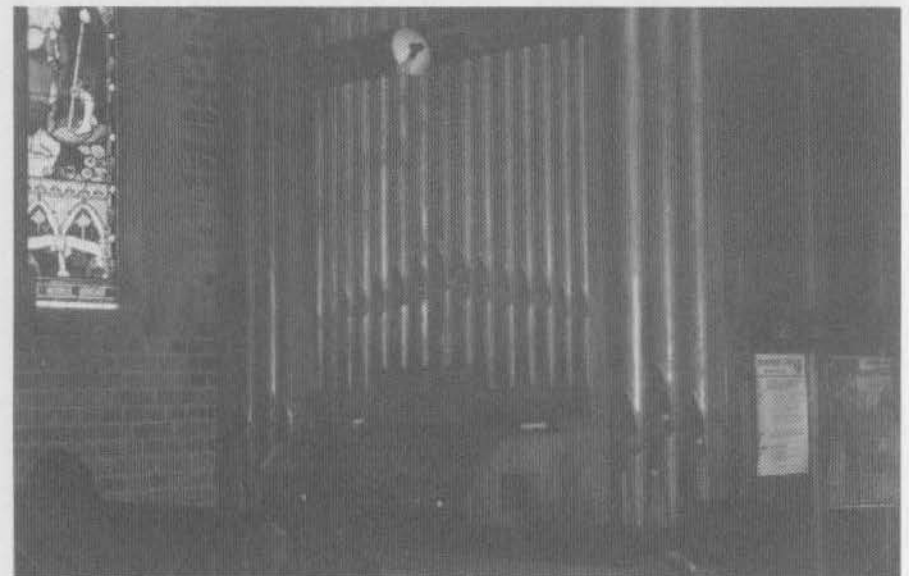
The organ Dedication Service was held on 14th February, 1954. A collection at the service raised 53/0/0 pounds which reduced the debt on the organ to approximately 360/0/0 pounds. The Diocesan Council issued a loan of 300/0/0 pounds (free of interest), The old organ sold for 60/0/0 pounds. The sale of the shelter shed and netting wire by the Tennis Club was 18/0/0 pounds and credited to the organ fund.

ORGAN ACCOUNT

£ s. d.		£ s. d.	
To Original Legacy	1000 0 0	By Pipe Organ	1560 0 0
Bank Interest	345 0 0	Side Case	35 0 0
Vestry	251 10 0	Installation	275 0 0
Diocesan Loan	300 0 0	Electric Wiring and Brass Plate	26 10 0
	<hr/>		<hr/>
	£1896 10 0		£1896 10 0

P.M. Dec. 1954. Rev. B. Geary

In December, 1954 it was reported at the Vestry meeting that the organ debt had been reduced to 300/0/0 pounds.



ST ANNE'S PIPE ORGAN

SYMBOLS AND ABBREVIATIONS

Symbols are monograms used in the Church for Jesus.

Alpha - Omega....The two Greek letters, alpha and omega are excellent monograms for Jesus. The alpha looks just like our capital "A" while the omega looks like an inverted "U". When these two letters are shown with a symbol for Christ, it becomes a reference to Revelation 22:13 where Christ is declared "the first and the last, the beginning and the end."

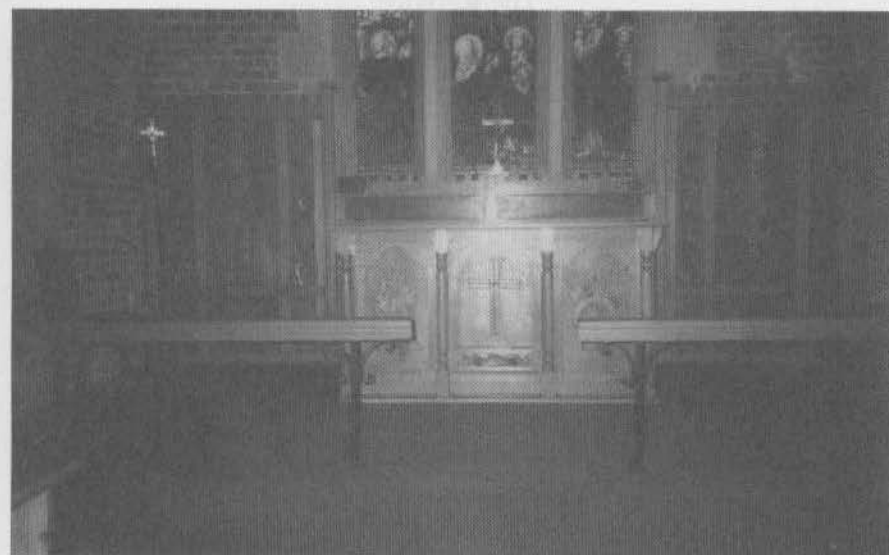


Frequently we see the monogram "I H S" engraved on crosses and altars. This is an adapted form of the first three letters of the Greek word for Jesus. (IKXIOYΣ). The third letter, the sigma, which looks like "M" lying on its left side, eventually fell out of use and an "S" was substituted. Both monograms are still in use, an abbreviation for Jesus.

A.M.D.G.

This is an abbreviation of the Latin (Ad Majorem Dei Gloriam).
To the greater Glory of God

SANCTUARY ALTAR



MEMORIAL PLAQUES IN THE SANCTUARY

In loving memory of
The Reverend Canon Blake Hobart
Rector of Gresford, 1935-1942
Faithful priest and servant of God, who
By great dedication and fine art
created the reredos, altar, communion rails and
organ frontal in this church.
To the greater Glory of God.

The Reredos
To the glory of God
and in memory of
a good and devoted son
Walter Seton Reynolds
accidentally killed May 28, 1931
Age 19 years
an offering from his mother
"Trevallyn", Gresford.

Marble Credence Table
To the greater glory of God
and in memory of
Frederick John Lawrence
1952

I.H.S..
A.M.D.G.
This Alms dish was given by
Frederick & Hedwig Lawrence
in gratitude for Blessings received.
1939

The candle sticks were given by Vera Lill
in memory of her beloved husband
Herbert George Lill
who died 26-12-'73.

SANCTUARY

A.M.D.G.
This plaque is in recognition
of the generosity of the
VERA LILL Bequest for copies of
A PRAYER BOOK FOR AUSTRALIA..
1996.

THE CHALICE
To the Glory of God
and in memory of
G. J. CHAMPAIN.
8-7-1949.

SILVER CRUETS
A.M.D.G.
In memory of
WILLIAM SELLENS.
From his family.
1977

A.M.D.G.
In memory of
LAUREL HANCOCK.
from her family
1977.

ALTAR CLOTH
A) Given and made by Mrs A.D. Wilson
Now used by St John's Lostock.
1955.
B) Hand made Altar Cloth given in
memory of the Drinkwater Family.
Still in Use..
1980.

SANCTUARY LIGHT

In loving memory of
HERBERT VICTOR COLLISON
for many years Warden of this Church
passed away 1-5-1970.
May his soul rest in peace.

EASTER CANDLE

"New life in the risen Christ".
White cedar pedestal.
The brass fitting for candle
Made and given by John Marr.
1990.

NAVE

BOOKS PRESENTED

COMMON PRAYER
CHURCH OF ST ANNE GRESFORD
EASTER 1902
Presented by REV. S. TAYLOR.

THE COLLECTS, EPISTLES AND GOSPELS
GRESFORD, N.S.W.

Presented by the Society for promoting Christian Knowledge
Altar services as proposed in 1928
In memory of a good friend
LAURENCE VERNON WELLS
FROM Terry Richardson, Neville Lawrence and Lloyd Grant
2nd May, 1969

THE AUSTRALIA HYMN BOOKS

Presented by Mrs Martha Everett
1987.

HOLY BIBLE-NEW REVISED STANDARD VERSION

with APOCRYPHA, 1990
is presented to St Anne's Church Gresford
By the generous gift of
ST ANNE'S WOMEN'S GUILD
On the occasion of
SUNDAY AFTER ASCENSION
15th May, 1994

TWO SMALL HOLY BIBLES
Gift from ST ANNE'S GUILD
FOR READERS at ST ANNE'S CHURCH
19-5-95

GRESFORD N.S.W.

Presented by the Society for
Promoting Christian Knowledge for
The Communion and other services
according to the use of the
United Church of England, Ireland.
printed at the University Press, Oxford.
M.DCCC.XLIV.=1844

TO THE GLORY OF GOD

and in LOVING MEMORY of
JAMES W. BOYDELL
"CAMYR ALLYN"
devoted worshipper in this Church
and for many years Warden and
Honorary Lay Reader in this Parish.
This LECTERN was given by his nephew
G. J. CHAMPAIN

PRAYER-DESK AND PRIEST'S CHAIR

To the Glory of God
and in memory of
HENRY CREW who passed away
Sept. 1st, 1930.

Worshipper, and for many years
Warden in this Parish.
This prayer desk and Priest's Chair,
the Gift of his loving wife,
MARGARET CREW.

To the Glory of God
and in memory of
SUSANNAH JANE HARRIS
DIED 27th August, 1932.
This pulpit is the Gift of her grateful son
HAROLD LESLIE HARRIS
To the memory of a good mother.

A.M.D.G.

The Pulpit Light is the given
in loving memory of
GEORGE SELLENS
Died 5th April, 1983.
The gift of his wife, RITA, and family.

CHAIR

To the Glory of God and in memory of
GEORGE RODWELL.
Died 1926, Age 86 years.

DESK

To the Glory of God
and in loving memory of
LAURENCE VERNON WELLS.
The gift of his friends in the FELLOWSHIP.
1969.

CEDAR TABLE

Made by DARRELL WILSON.
1957.

BANNERS

THE ALLYN & PATERSON RIVERS
Gift to the GRESFORD PARISH
Made by BRUCE CAPP.
1975.

MOTHER'S UNION

made by HEATHER STUART-FOX
1974.

GRESFORD PATERSON PARISH ST ANNE'S GRESFORD

made by Barbara Horn and Sheila Galbraith
1995.

ROLL OF HONOUR

Parish of Gresford
1914-1918.

CRUCIFIXES

A.M.D.G.

In loving memory of
FRANCES LILY HERBERT
Died 7th March, 1988. Age 81 years.
A faithful Worshipper.
The gift of her family.

A.M.D.G.

In loving memory of
STANLEY ELVER LAWRENCE
& LAURA JANE LAWRENCE
The gift of their family.
1985.

A.M.D.G.

In loving memory of
STANLEY MERVYN KELEHEAR
Died 26-6-1994. Age 71 years.
A faithful Worshipper.
The gift of his wife and family.

PLAQUES

In loving memory of
EDITH ANN WALKER
1879-1967
A regular worshipper in this church.

A.M.D.G.

In loving memory of
JOHN & RUTH LAWRENCE
who have laboured for the good of this church.
Erected by their descendants.
1987.

A.M.D.G.

The gift of the Parish Council
on the occasion of the
PARISH CENTENARY CELEBRATIONS.
1884(5) - 1985.

A.M.D.G.

The sound equipment in this church is
given in loving memory of
ARTHUR LESLIE RICHARDSON
Died 26th November, 1961.
Age 72 years.
ETHEL TUDOR RICHARDSON
Died 9th September, 1974.
Age 92 years.
A gift of their son.

NAVE Brass Jug for Christening Font

To the memory of
WAYNE RODNEY LILL
Died 2nd January, 1955.
Age 9 years.

To the Glory of God.

In memory of
ALLAN DAVID WILSON
Died 4-9-53
FONT COVER
Presented by his wife and family.

The GAS HEATING IN THIS CHURCH
is the gift of
ST ANNE'S WOMEN'S GUILD
to mark the Centenary of
THE PARISH OF GRESFORD.
1884(5) - 1985.

A.M.D.G.

This chandelier commemorates 150 years of
LINDEMAN'S WINE IN THE HUNTER VALLEY
and founder, DR HENRY JOHN LINDEMAN of
"CAWARRA", GRESFORD.
1843 - 1993.

A.M.D.G.

The Overhead Fans in this Church
are given in loving memory of
ARTHUR ALFRED MUNDAY HANCOCK
Died 2nd March, 1986. Age 82 years.
The gift of his family.

A.M.D.G.

This plaque has been placed by
the Vestry of ST ANNE'S CHURCH, GRESFORD.
commemorating the gift of kneelers by
Mrs May Robinson and the late Ken Bridger
Now used in St John's Church, Lostock.
1990.

Red vinyl padded kneeler each pew
The gift of Mrs May Robinson.
1989.

WALL FANS

In Loving Memory of
A. E. HARRIS
6-6-68

donated by Mrs A. O. Wilson

IN LOVING MEMORY OF

A. E. HARRIS
6-6-'68

donated by Mrs S. A. Archinal.

PORCH



THE WOODEN GATE ON THE PORCH IS FROM
THE OLD SLAB CHURCH 1856 - 1897.

The Porch Seat was donated by
Miss Mercy Lawrence.
for now and after.
1979.

Copper Tooling Plaque with brass frame and glass.

O Lord in the morning
Will I direct my prayer
Unto Thee, and will look up
Lord!
Make me an instrument of Thy peace,
Where there is hatred, let me sow love
Where there is injury, pardon,
Where there is doubt, Faith.
Where there is despair, Hope,
Where there is darkness, Light,
And where there is sadness, Joy.

C. Hipwell.
July, 1982.

A.M.D.G.

In loving memory of
RAYMOND CANTWELL COLLISON
a beloved husband and father.
Former Parish Councillor
and Vestryman of this Parish.
The floor tiling in this porch
is the gift of his family.
1986.

A.M.D.G.

In loving memory of
MICHAEL SMITH
Died 25th December, 1974.
OLIVE MARY SMITH
Died 2nd October, 1989.
The gift of their daughter and her family.

OUTSIDE

FRANGIPANNI TREE
In memory of Rev. B. E. Geary
planted by Mrs D. Geary
(given by Mrs Alf Watson)
1960.

HOLLY TREE

Planted by A. E. HARRIS,
1888, and still growing.

FLAG POLE AND FLAG

A.M.D.G.

In loving memory of
ARCHDEACON VICTOR JAMES ROBINSON M.B.E. E.D. THL.
born 1-8-1910 died 3-5-1986
PRIEST, SOLDIER, FARMER.
given by St Anne's Vestry.

ENTRANCE GATES.

Double Gates

In memory of
TROOPER A. P. B. GREY
who died in South Africa
November 19th, 1900.

Small Gate

In memory of
TROOPER M. L. G. GREY
KILLED on Active Service.
18th February, 1902.

THE LAMP AT THE ENTRANCE GATE.

I.H.S.

Dedicated to the original lamp makers
In loving memory of
My dear Uncle Tom Brooks
Remembered always by Ena Mc Cauley, Allynbrook
Lamp repaired by Jack Mc Cauley, 1990.

ST ANNE'S SIGN

A cedar sign board was erected
near the lamp by
Bob Richards
4-3-1998

BURIAL GROUND

Don't forget to take a stroll around the Burial Ground. Much of the early history of Gresford can be learned from reading the inscriptions on the headstones. Many of the names and dates tell us who were the pioneers. It was they who helped lay the foundations for the Church of England faith in this town of Gresford.

Here's a short list of graves worthy of note.

George Townshend, an early grantee of land from Trevallyn to Gresford on the Paterson River. It was from him land was acquired for a church and cemetery in the 1840's. (See Bishop Broughton's article)

Charles Boydell received a grant at Gresford. He called his place "Camyr Allyn". His descendants had long association with this church.

Senor Francisco Mareneo was a benefactor of the church. The triplet window in the sanctuary was bought with part of his bequest.

Mr Thomas Rodwell fought at the Battle of Waterloo in 1815.

Dr Arthur Holden Lindeman, "Cawarra", was famous for his wines. The early settlers called on him for medical treatment.

The Steers family were in residence on the Paterson and much respected by the early settlers. (G. Muddle Diary).

J. Bush was the first postmaster, Schoolmaster of the Church School, and first teacher of Gresford School.

Charles Herbert, born about 1885, was 101 years when he died in 1986. What a wealth of information he had to offer! David Wells captured some interesting stories of last century on tape.

One story told to David was that the aborigine, Boney was buried outside the back boundary of this churchyard..

Many of those interred here were once worshippers of this church and served it well.

May they rest in peace.

ACKNOWLEDGEMENTS

Maitland Mercury (extracts)

Dungog Chronicle (extract)

Parish Messengers (Rev. F. W. Rush, Rev. B. E. Geary)

Newcastle University Archives and Archivists

Gresford Historical Society (George Muddle Diary) & Mrs Bishop

Jack Sullivan (2 photos)

Rev. George Garnsey

Margo Capp

Verna Wells

David Wells

Rosemary Collison

Freda Collison

Hazel L. Hancock.



The First Church Built 1856