

1829

Back to . . .

Gresford

Centenary

Celebrations

1st and 2nd November, 1929

In aid of Building Fund

GRESFORD SCHOOL OF ARTS

1929

---

## Gresford Anthem

~  
Tune:—"Onward Christian Soldiers"  
~

Gresford and its District,  
Grown a century old,  
You have hopes of future  
Progress yet untold,  
Industries prolific,  
Advancement yet untold,  
Great will be your future  
Soon you'll stand alone.

Chorus:

In the Paths of progress,  
In the growth of mind,  
Be thou an example  
Lag not thou behind.

In the arts of science  
And in those of trade,  
Raise a noble standard  
Be not thou afraid.  
Hardy men and women  
Have well built up your past,  
See the stones of future  
Are built up so to last.

Chorus :

---

# BACK TO GRESFORD CENTENARY CELEBRATIONS

1829-1929



# SOUVENIR

---



IN AID OF THE BUILDING FUND OF  
GRESFORD SCHOOL OF ARTS

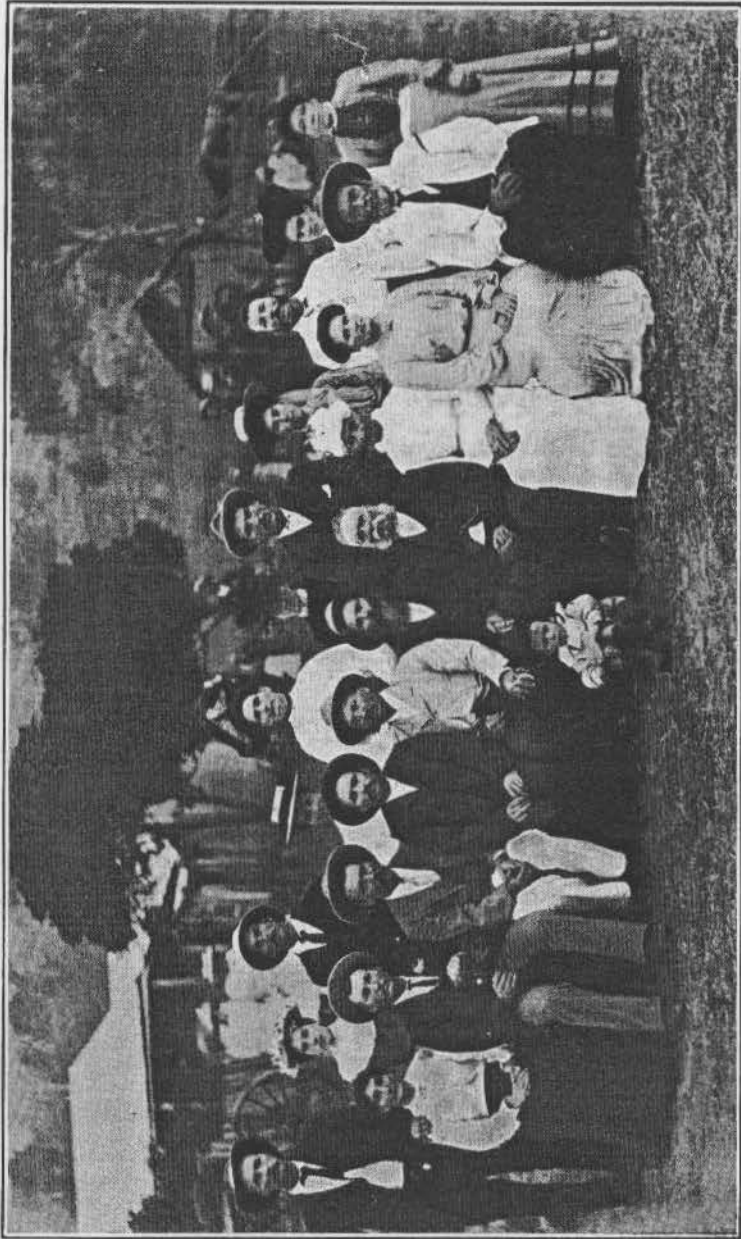


Photo of typical District Family—LAWRENCE FAMILY

Front Row—Katherine, Joseph, Samuel, Job, Edward, John, Thomas (Father), Martha (Mother), Susan, William  
 Back Row—Thomas, Florrie, Albert, Elizabeth, Ann, Sarah, George, Minnie, James, Sarah, Isabella  
 The lad in front is Stanley

BACK TO GRESFORD CENTENARY CELEBRATIONS.

## GRESFORD

Gresford is situated in the Country of Durham and in the Wallarobba Shire. It is divided into two townships, East and West Gresford, distant from each other by about a mile. West Gresford is on the Paterson River and East Gresford on the Allyn River, in the junction of the Paterson and Allyn Roads. East is the chief place of business about 13 miles from the township of Paterson, 26 miles from Maitland and the same distance from Singleton. Gresford has a healthy and bracing climate, and is the centre of a large grazing, dairying and fruit growing district, which is particularly noted for the famous Paterson River <sup>blue gum</sup> oranges. Wonderfully rich alluvial flats produce splendid crops of lucerne and grain. Good ironbark timber is plentiful. The population of the town and District is over <sup>blue gum mahogany timber</sup> 2000. Outside centres are Allynbrook, Halton, Eccleston, <sup>FISHERS SUMMER HILL</sup> Penrith, Mt. Rivers, Lostock, Carrabolla, Lewinsbrook and Trevallyn, each of which has distinctive features.

At the Union Sales held each Monday opportunity is given to the farmers for the disposal of farm produce, etc. Stock sales are held on alternate Fridays. The sales have a splendid reputation all over the District and are well attended. At the head of the Paterson and Allyn Rivers are the famous Barrington Heights

## BROOKER & LINDEMAN

AUCTIONEERS, VALUERS,  
STOCK & STATION AGENTS

Stock Sales of Fat and Store Pigs and Cattle,  
Every Alternate Friday at 11 a.m.

Gresford Union every Monday, at 11 a.m.

Orchard and Farm Produce

Property, Land and Clearing-out Sales, Conducted  
in any part of the District.

---

---

## PERCY MERRYFIELD

HAIRDRESSER, EAST GRESFORD.

Tennis Repairs. Umbrellas Repaired.

Scissors Sharpened.

## BACK TO GRESFORD CENTENARY CELEBRATIONS.

---

which in winter are covered with snow and trout are obtainable in the streams. The heights for these and their other scenic features are destined to be a great tourist resort in the near future. They are accessible through Gresford.

Gresford possesses a Police Station. The Magistrate from Maitland visits on the 2nd Thursday of every 2nd month. A resident Medical Officer practises and "Calala" private hospital is pleasantly situated in West Gresford, under the control of Matron Ficker. There are three Churches, the R.C. in the East, Rev. Father Kiernan in charge, the Church of England in the West, Rev. A. R. Holmes in charge, and the Congregational Church in between, Rev. G. Baily in charge. Allynbrook, Eccleston and Lostock have churches. In most cases the churches are surrounded by cemeteries.



## BACK TO GRESFORD



You are not back to Gresford until you have visited

BEATTY'S

# Victoria Hotel

Best Company

Best Attention.

Best Liquors.

Best Accommodation.



Old Timers.

New Timers.

And Others.

Call in

A CORDIAL WELCOME.



Phone: 10 Gresford.

BOOTH ON THE GROUND

## BACK TO GRESFORD CENTENARY CELEBRATIONS.

### EARLY SETTLEMENT

When the expedition of Captain Cook returned to England the journal of Sir Joseph Banks was used, as much, or perhaps more, than Cook's. The tidings of a land "whose deep black soil he thought capable of producing any kind of grain" and "whose woods he found interspersed with as fine meadows as were ever seen" drew close attention. Banks became a foster-parent of the new-found land. He wrote, talked and lectured about it. He was consulted by Cabinet Ministers in connection therewith. In 1783 England recognised the independence of the United States. England had been in the habit of sending convicts there. This had, perforce, to cease. A new convict depot had to be found. It was a necessity for at the end of the 18th century, punishment for crime in England was most severe—generally out of all proportion to the offence. Trivial offences were at that time treated as capital crimes. No great crime was likely to bring a penalty of 7 to 14 years transportation. Hence the gaols soon became full and to relieve the situation a penal settlement was formed in N.S.W. This continued for some time. During the terms of the early Governors convicts were sent out regularly. Governor Macquarie—1810-1821—regarded the Colony as a convict settlement pure and simple and not only discouraged free

1829

1929

WHEN IN WANT OF ANYTHING

There is no need for any inconvenience—no need for hesitation.

Your Problem may be Solved at

# Knights Store

for we have a LARGE RANGE of your  
Everyday Requirements in all Departments—

RIGHT HERE ON THE SPOT,

having anticipated your patronage.

We are here at your Service

Our Prices are Right, and you will get a Square Deal.

So come right along—and “get the habit” of doing  
your shopping at

**KNIGHT'S STORE**  
EAST GRESFORD.

BACK TO GRESFORD CENTENARY CELEBRATIONS.

*Free settlers came in 1829*

settlers but, through his representations to the Imperial Government, they did so too. Indeed, so little was known of the resources of the Colony by the people of the British Isles that there was little desire on their part to settle here. His wholesome regard for the welfare of the Emancipists—convicts who had served their time—brought him into conflict with retired officers of the N.S.W. Corps and a few wealthy settlers. This in 1819 led to the appointment of Mr. Bigge as Commissioner to enquire into the complaints. As a result of his report Macquarie was recalled in 1821. But of greater import was his recommendation on the matter of encouragement of free settlers. The resources of the colony were brought so prominently before the British Public and a stream of Free Settlers and men of enterprise flowed steadily in. This report was supplemented by a book published by Wm. Chas. Wentworth. Also as a field of investment English Capitalists turned their attention to the Colony—the A.A. Co. with a capital of a million—was formed for the development of the Pastoral, Agricultural and Mineral wealth of the colony. A million acres of land was granted to them chiefly at Port Stephens, Liverpool Plains and Newcastle (following the discovery there). The extension of exploration, brought further knowledge of the capabilities of the colony and influenced more settlers. Gradually they

1829

1929

ARE YOU A MEMBER OF  
**School of Arts**

IF NOT  
WHY NOT

?

Subscription, 2/6 a Quarter.

Splendid Library.

Billiards

Ping-Pong

UNITY IS STRENGTH.

JOIN UP!

THE SECRETARY OR ANY MEMBER OF THE  
COMMITTEE will be glad to welcome you.

BACK TO GRESFORD CENTENARY CELEBRATIONS.

went out further until they reached the upper portions of the Hunter and its tributaries. Grants of large areas were given along the Paterson, Allyn, Parke's Creek, etc. Some of these grants were received by the earliest settlers in these parts. Outstanding among these were Townshend, Charles Boydell and Hon. Alexander Parke. These arrived about the same time, though it is probable that the first named was slightly ahead of the others, for Chas. Boydell is said to have stayed with Townshend. Possessed of wealth, fire of youth, energy and determination, assisted by grants of land and assigned convict labour they went outside the limits of civilisation. Townshend had grants at Trevallyn and other blocks along the Paterson between Trevallyn and Lostock, Boydell from Gresford to Allynbrook, Parke in other parts of the district—Parke's Creek. The love of their native place—in or near Wales—no doubt induced them to name local places after others dear to their memory near the Welsh border. Of which Gresford, Allyn, Caergwrlle (now Allynbrook), Camyrallyn are samples. Soon assisted Settlers arrived—English, Irish, Scotch, Welsh, Germans, etc. Each helped to form settlements which were really self-contained and self-supporting being worked on the old-time (18th century) domestic principle. In their midst they grew the necessaries of life—grew their own crops, ground their own wheat, supported their own

*Picture Gresford in Wales*

**HABIT IS SECOND NATURE.**

Get the Habit of going to

**E. BURLEY'S IDEAL STORE**

**You Won't Regret It.**

**PRICES ARE LOW. GOODS ARE THE BEST.**

**Attention and Civility to Everyone.**

**If you cannot call, 'Phone 2 Gresford.**

We want your custom, and after you have given us  
an order you will want us.



**SOFT DRINKS, VICTOR'S ICE CREAMS**

**CHOICE FRUITS direct from the Orchards.**

**Refreshments Served at All Hours.**



**MAKE NO MISTAKE:**

**WE LEAD:**

**WE ARE ON THE TOP OF THE HILL.**

**We are on top for anything you want.**

**BURLEY'S STORE, EAST GRESFORD.**

**BACK TO GRESFORD CENTENARY CELEBRATIONS.**

tradesmen (shoemakers, carpenters, etc.) and conjointly faced difficulties as they presented themselves.

Blacks were numerous and troublesome and losses of stock and crops from their depredation were frequent. The aboriginal did not understand the code of honesty. He explained "No stealem ony takem." Roads, there were none, only such as the Settlers made and these were often mere tracks. The journey to Sydney took over a week. From Gresford they rode to Morpeth, took a small boat to Newcastle and another to Sydney. Goods had to be carried on pack-horses or per medium of bullock waggons. The means of exchange was "barter." They grew their own wheat, made their own flour or went without bread. Corn hominy was often a delicacy—dished up in all conceivable ways. The earliest crops were wheat, corn, tobacco and turnips. They built flour mills (one existed on the Paterson and another on the Allyn). Often a journey to places further afield were made for some supplies. Tobacco presses were in evidence and for a long time good tobacco was made and sold. Reduced prices, however, made the tobacco industry unprofitable. By degrees "Gigs" came to be the method of transit. A little dairying was done and stories are told of packing butter to the market at Morpeth, Newcastle and even Sydney.

*Allyn*

1829

1929

## ALF. WATSON

GRESFORD. 'Phone: 17.

GENERAL CARRIER.

EAST & WEST MAITLAND TRIPS DAILY.

CREAM & MILK COLLECTION DAILY.

Prompt attention to all orders. A trial solicited.

My motto: Promptness and attention.

---

---

## C. G. ARTHUR

PATERSON,

THE NEW LIVE BAKER & PASTRYCOOK.

Fresh Bread Delivered Daily.

My Motto: Serve to please, and Please to Serve.

'Phone: 39 Paterson.

## BACK TO GRESFORD CENTENARY CELEBRATIONS.

This is the heroic age of the settlement of the District. Men and Women left civilisation behind and taking "their lives in their hands" occupied practically unknown lands. Their dangers were many and great and would have overcome any but the bravest and hardiest. Droughts and floods, supplies run short or delayed by impassable roads or adverse elements, hurried and difficult journeys to obtain some, native birds and animals often substituted and eaten without the flavouring of condiments, stickfast dampers, hominy in every form and not too finely ground, attacks from the cunning and stealthy natives, hours of terror, unaccounted days and forgotten Sundays and fast days, sickness far away from succour, death under hard and lonely circumstances. These are a few of the troubles, trial and tribulations they bore or suffered. And yet they braved it and have left a heritage of a rich and wonderful District. "A land of milk and honey."

## SCHOOL OF ARTS

Many years ago the School of Arts was established. The land was a gift from Mrs. Lindeman, relict of the Lindeman Family. It was vested in Trustees, Messrs. Cooper; Logan and John Glennie. Active and hard working Committees, supported by a progressive Public, soon erected buildings thereon—a brick-

1829

1929

BACK TO GRESFORD CENTENARY CELEBRATIONS.

---

## PROGRAMME



Procession forms at West Gresford at 11 a.m. and marches to East Gresford.

Prizes for Best Decorated Motor Car, Most Comical Turnout, and Best Business Turnout.

Displays by School Children—Flag and Scarf Drill—Maypoles—  
—Varied Competitions.

### SPORTS EVENTS.

SCHOOL OF ARTS HANDICAP (75 yds.). Nomination 1/-.  
Prize £1/1/-.

BOYS' RACE (under 10), BOYS' RACE (under 14), HIGH JUMP, POLE VAULT, THREE-LEGGED RACE (Females), STEPPING 50 YARDS (Women), PUTTING THE WEIGHT, CORN HUSKING CHAMPION COMPETITION, TUG-O'-WAR ON HORSEBACK, FLAG RACE (Men), RELAY RACE, TEAMS OF 4 (Men), GIRLS RACE (under 10), GIRLS RACE, (under 14), THREE-LEGGED RACE (Males), STEPPING 100

---

1 8 2 9

1 9 2 9

BACK TO GRESFORD CENTENARY CELEBRATIONS.

---

## PROGRAMME



YARDS (Men), THROWING AT THE WICKET, NAIL DRIVING FOR LADIES, THROWING THE BROOM (Ladies), WRESTLING ON HORSEBACK, FLAG RACE (Ladies), RELAY RACE OF 4 (Ladies).

Carnival opens in the Hall, East Gresford, on FRIDAY NIGHT, at 7 p.m.

Competitions of All Kinds.

Sports on the Showground on Saturday!

Carnival in the Hall on Saturday Night!

Refreshments on the Sports Ground.

**Mark the Dates—1st and 2nd NOVEMBER.**

OLD TIMERS COME BACK TO GRESFORD.

JOIN IN THE PROCESSION.

Prize for the Oldest Person on the Ground.

E. W. CULBERT, Hon. Sec., Gresford School of Arts.

---

1 8 2 9

1 9 2 9

# FARMERS!

READING MAKETH A FULL MAN  
WRITING AN EXACT MAN

BUT CONFERENCE MAKES A READY MAN.

JOIN THE AGRICULTURAL BUREAU,  
and discuss subjects nearest to your pocket.

G. N. DOYLE, Hon. Sec.

---

---

## C. C. HALL

EAST GRESFORD,

will BUY any class of CATTLE.

PODDY CALVES AND VEALERS A SPECIALITY.

'Phone: 43 Gresford.

## BACK TO GRESFORD CENTENARY CELEBRATIONS.

---

hall and adjoining buildings, supper-room, billiard-room and library. Owing to the rapid growth and the decline of West Gresford negotiations were opened in November, 1926, to sell the property to the local Church of England. Departmental formulae and other matters caused a considerable delay but finally the sale took place. The old School of Arts became the Parish Hall and the supper-room, billiard-room and library were removed East where they were re-erected with improvements on the new and Central site. Plans for an imposing brick hall have been prepared, bricks for the same are on the ground. Finance has been a difficulty but soon it is hoped that the Town and District will possess a building worthy in appearance and utility of the progressive centre.

One outstanding worker for the School of Arts in the past was the late George Grey, or, as he was almost generally known, "Uncle Grey." He filled every office on the Committee and died in harness for at the time of his death he was Secretary. No effort on his part was too great or no time mis-spent provided the institution benefited. His photo, a valued possession of the School, now hangs on the walls of the present building.

The present Officers are:—President: C. C. Hall. Vice-Presidents: Messrs. D. Smith, H. Jones and T. Boyle. Treasurer: A. O.

---

1 8 2 9

1 9 2 9

# Gresford Bakery

T. BOYLE, BAKER, PASTRYCOOK.

BREAD OF THE HIGHEST QUALITY.

CAKES AND PASTRY SUPPLIED.

Wedding Cakes a Speciality.

My Goods Speak for themselves.

ONLY FIRST-CLASS QUALITY SUPPLIED.

'Phone: 1 Gresford.

---

---

ARE YOU A MEMBER OF  
GRESFORD DISTRICT  
AGRICULTURAL SOCIETY

If not, you are OUT OF FASHION.

FALL INTO LINE.

A. R. BROWN, Sec.

## BACK TO GRESFORD CENTENARY CELEBRATIONS.

---

Moore. Hon. Sec.: E. W. Culbert. Committee: Messrs. W. Dark, L. Brennan, J. Jones, B. Brennan, S. Storey, H. Southcombe, S. V. Drinkwater, H. G. Clements, W. Spencer, and R. Lawrence. Trustees: Messrs. H. G. Crew, A. H. Lindeman and D. Smith.

### SCHOOL

The present brick School was built in 1881. The wooden room was added later. An earlier School was situated near the vicarage. Mr. Bush and afterwards Mr. Parker taught in the old building. The Head-masters who officiated in the present building have been:—Messrs. W. Parker, T. P. Rodgers, T. Page, J. Thompson, T. A. White (now Inspector), C. Levitt and E. W. Culbert (present Teacher).

### SHOW

The Gresford District Agricultural Society was formed in 1927, and has successfully held three Shows. The ground, which is a natural Show Ground, has during this time been largely improved. Suitable buildings have been erected and the society has a credit balance. Until recently Mr. P. Legoe was President. The present occupant of the Chair is Mr. G. J. Champain. The Secretary is Mr. A. R. Brown, a strong and energetic Committee supports these officers.

---

1 8 2 9

1 9 2 9

# Shelton & Fisher

GARAGE AND SERVICE STATION.

Agents for

ESSEX and  
FORD CARS  
And TRUCKS

All Classes of Repairs. Complete Stock of Accessories.

TYRES — BENZINES — OILS

At Competitive Prices.



DAY AND NIGHT SERVICE.

'Phone: 36 Gresford.

BACK TO GRESFORD CENTENARY CELEBRATIONS.

---

## NOTES

Mr. G. Townshend at one time had a jam factory at Trevallyn. Here fruit was grown—apples, pears, peaches, etc. A number of families—mostly Germans—were employed in the orchards and factory. He also had a nursery for fruit trees and supplied many settlers. The great drawback in the jam business were containers. Hence earthenware jars were used. In consequence freights were very heavy. Some trees were brought overseas. Noticing a new grass under some of them, the men were ordered not to chip it out as it might be valuable. With the trees supplied to other settlers and by other means it reached other farms and spread over the District. It became the famous "Townshend Grass" which farmers now regard as a curse.

He is also reported to have imported some watermelon seeds. When the first crop ripened he was showing the crop to some visitors and complained that some of them were vanishing. The visitor picked on a man working near as being the likely culprit. "Not he," said the owner. "He doesn't know what they are. I'll prove it." He picked one, called the man, cut a slice and gave it to him. "Thank you, Sir," said he. He carefully pulled away all the edible part, threw it away, and ate the white and skin. "There you are," said G.T. "That proves it," but the melons continued to disappear, much to his amazement.

When requiring MEAT, leave your order with

**LES. LAWRENCE**

**THE QUALITY BUTCHER,**

Where Quality and Service go hand in hand.



**My Motto: Cleanliness, Civility, Attention.**

---

---

WHEN YOU GET A GOOD THING  
REMEMBER WHERE YOU GOT IT.

**W. M. WATSON**

**THE BOOT STORE EAST GRESFORD.**

'Phone 49. Green Coupons Given Freely.

**BACK TO GRESFORD CENTENARY CELEBRATIONS.**

---

Both the Grandfather and Father of Messrs. Lawrie, Greig and Bob were at one time employed by the late Wm. Boydell in the capacity of shepherds. The sheep were of a mixed kind but did remarkably well. On one occasion a flock was taken to Myall. Being short of meat at Caergyle Mr. Lawrie (Father) was asked by his employer if he could drive about half a dozen across the mountain. This the young Scotch Laddie—then 14 and only 4 months after landing in the Colony—did much to the consternation of Mr. Boydell. The feat was all the more praiseworthy when it is remembered that the blacks had a wholesome predilection for the "Jumbuck" and by weird noises often scattered the sheep with the intention, of course, of spearing them afterwards.

Several whites are reported to have been killed by the blacks in different parts of the district. On one occasion a shepherd was killed. What became of his body can only be surmised. But some settlers happened on a blacks' camp and saw a gin with the shrivelled hand of a white man busily engaged in pulling the sinews to make the hand move.

Years ago Gresford was noted for its tobacco which took prizes at exhibitions in Maitland and Newcastle. The remains of the late J. Beatty's tobacco press may still be seen near the sale-

---

1 8 2 9

1 9 2 9

THE LEADING BUTCHERS.

## DRINKWATER BROS.

We Supply Best Meat at Lowest Prices.

MEAT KILLED DAILY.

We Act up to our motto: Attention and Civility.

A Trial Proves. We are here to satisfy.

'Phone: 2. Green Coupons Given Freely.

---

---

## SID WATT

GENERAL CARRIER,

FIREWOOD, TIMBER, RIVER GRAVEL, Etc.,

at Shortest Notice.

'Phone: 36 Gresford.

## BACK TO GRESFORD CENTENARY CELEBRATIONS.

---

yards at East Gresford, while others are to be found in many other parts of the District.

Cawarra, which gives the name to one of the best known wines, now has no vineyards. They have been turned into pastures and dairies.

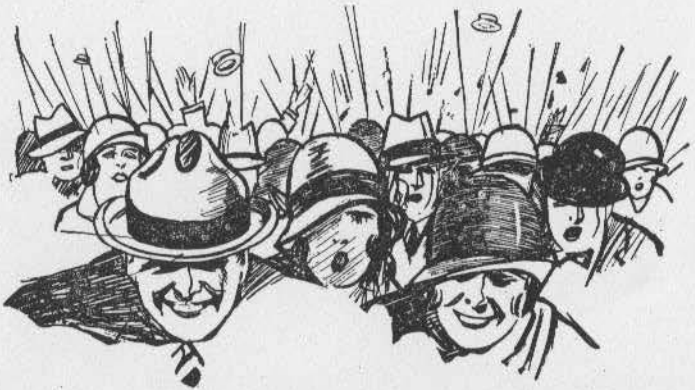
The following is taken from a tombstone in the West Gresford Cemetery:—"Thos. Rodwell, who departed this life on 31st August, 1861. He was in the Battle of Waterloo in 1815."

East Gresford contains the monument of Mr. John Kevin at one time Inspector of Schools in this District. He was the founder of School Libraries and died at Allynbrook.

The first store in Gresford was kept by Mrs. Johnson on the site of the present home of Mr. W. Lawrence.

Mr. Randall had a store at Wallah and afterwards had a store and a tobacco factory where Mr. W. Crew now lives, "Willow Tree."

The present home of Mr. C. Bird was at one time a hotel. Cattle sales were held there.



## EAST GRESFORD MAKES WHOO-EE!

Our native sons will soon be back with us. Old friendships will be renewed, and we're all looking forward to Back to Gresford Week being as Merry as a Wedding.

### CHANT'S THE LEADING STORE OF EAST GRESFORD

Will be able to take care of all your requirements for the carnival occasion.

You will, no doubt have visitors and you will want to show them a good time.

Everything for home and farm is here at the same moderate prices that made CHANT'S Store in West Maitland famous.

Should you require anything that is unobtainable in our East Gresford Store, you will have our big West Maitland stocks upon which to draw.

Shop in person, Shop by 'Phone, or Shop by Post. Chant's have unusual facilities for serving you and can execute Country Orders with despatch.

### CHANT & CO. LTD. WEST MAITLAND & EAST GRESFORD



## BACK TO GRESFORD CENTENARY CELEBRATIONS.

The surveyed township of Gresford is near the pound yard.

At one time a building existed in East Gresford which could boast of being a hotel, pharmacy, saddlery and joinery—all under one roof. Later it became a wine shop. Then again a hotel. This hotel was called the "Junction Inn." Later the license was transferred to the present "Victoria" Hotel.

An interesting legend is attached to the cliff of Rocks known as "The Leap," formerly as "Lover's Leap." Several young Bucks (Blacks) were rivals for the affections of a particular young Gin. She did not reciprocate their affectionate regard and bolted. They followed and sighted her on the top of the rock but on arriving they were surprised to see her half a mile away on the other side of the river. She had found a track on one end covered with thick scrub and not easily discernible. They in their haste had not noticed it and so concluded that she must have leaped down and as she was not killed decided that she was a witch and gave up the chase. Hence the name, "Lover's Leap."

The forethought of the early settlers in the preservation of the native has resulted in magnificent avenues of trees being found along most of the roads. The shade they afford combined with the beauty stand as a monument to those old-time lovers of Nature.

## A RACE

The late Mr. G. Grey told a tale of a resident whose abilities to sprint were not so great as his ideas. Jokingly they told him that his protruding ears were the cause of his slow time and persuaded him to try with his ears tied back. Here is the result:—

In years that have passed, the story is told,  
And some of the people were then not so old,  
Sport had its sway and they practised away  
In the street, on the road, anywhere.

A foot-race was mentioned, once on a time,  
"By jingo!" says George, "that race must be mine,  
I have a young colt, I'll put him in train,  
He did it in even, he'll do it again  
In the street, on the road, anywhere."

The colt was procured a, party went out,  
Intent on seeing the racer tried out.  
The course was a slant, as rough as could be,  
But George decided 'twould do, don't you see,  
In the street, on the road, anywhere.

The co't was stripped and George rubbed him down,  
But noticed his ears stuck out from his crown,  
He started his runner, held a watch in his paw,  
Each second that passed with keen eyes he saw,  
From the street, from the road anywhere.

The time that it read was seconds too slow,  
So George faced his colt, his face all aglow,  
"It seems," he remarked, while walking the track,  
"Your ears catch the wind, so we'll tie those things back  
On the street, on the road, anywhere."

Now George had a piece of good ship's rope,  
He kept it in memory of a trip round Cape Hope,  
To carry the anchor perhaps was its use  
But seeing no other the colt did not refuse,  
On the street, on the road, anywhere.

They bound each ear back, gently and kindly,  
Round forehead and chin—the colt stood it finely,  
They put him on scratch and started him off,  
Compared the two times—four seconds cut off,  
On the street, on the road, anywhere.

George shouted and laughed, his companions joined in,  
"By jingo!" says George, "We'll rope this chap in,  
With ears tied well back, some toast and raw eggs,  
There's nothing to stop our colt using his legs,  
On the street, on the road, anywhere."

The race was run on a rough country track,  
The colt came out with his ears tied well back,  
Breathless they watched him lead half way home,  
Nothing can stop him, the race is his own,  
On the street, on the road, anywhere.

Just then, sad to say, they saw the rope fall,  
The wind caught his ears, his pace was a crawl,  
His ears filled out like two big balloons,  
The crowd laughed and giggled like so many baboons,  
On the street, on the road, anywhere.

# D. Smith

Saddle and Harness Maker

---

ALL CLASSES OF SADDLES AND  
HARNESS STOCKED  
AT PRICES TO SUIT THE PUBLIC

---

NEW STOCKS OF SPORTING GOODS  
CRICKET, TENNIS, FOOTBALL, GOLF  
VIGORO, PING PONG, BOBS, QUOITS

---

## The Sports Depot

The Phoenix Press, Printers, 80 Sussex St., Sydney.