



THE JOURNAL OF
PATERSON HISTORICAL SOCIETY
INCORPORATED

MUSEUM NEWS



Royal Australian Historical Society
— **CERTIFICATE OF ACHIEVEMENT** —
presented to

Photo: Bill Anderson

MABS & BILL KEPPIE
of
Paterson Historical Society Inc
by the
ROYAL AUSTRALIAN HISTORICAL SOCIETY
*for their lifetime dedication to
the recording of local history
and thirty years of service to
Paterson Historical Society*

M Metzki
Manager 2005

Ian Jack
President 2005

THE AIM OF THE PATERSON COURT HOUSE MUSEUM IS TO HOLD ITEMS IN TRUST FOR THE
PATERSON COMMUNITY THE HUNTER VALLEY AND AUSTRALIA

VOLUME 13 # 1

ISSN 1321 4438

JANUARY, 2006.

Affiliated with:

Royal Australian Historical Society

Museums Australia – Hunter Chapter

RURAL MUSEUMS

are a reflection of their community's identity

PATERSON HISTORICAL SOCIETY INC. EXECUTIVE 2005

AFFILIATED with Royal Australian Historical Society Inc. and Museums Australia Inc.

PRESIDENT: Cameron Archer

SECRETARY: Pauline Clements

ASS. SECRETARY: Pam Sivyler

TREASURER: Shirley Threlfo

VICE PRESIDENT: Kathy Lyall

JOURNAL: Pauline Clements, Val Anderson & Shirley Threlfo

MUSEUM CURATORS: Val Anderson & Bill Keppie

PROJECT COORDINATOR: Bill Anderson

RECORDER: Mabs Keppie and Shirley Threlfo

PUBLIC OFFICER: Cameron Archer

RESEARCH COMMITTEE: P Clements, S Threlfo, M & B Keppie, J Sullivan, C Archer, V Anderson.

PATRONS

Mr. M Morris OA

Mr. R Baldwin MP

Mr. J Price MP

Mr. S Lowe AM

Mr. G Semken

Mr. A Fairhall

MEETINGS PHSI meets the first Thursday of each month – 7.30 pm. – at the Paterson Court House Museum (Recess December/January)

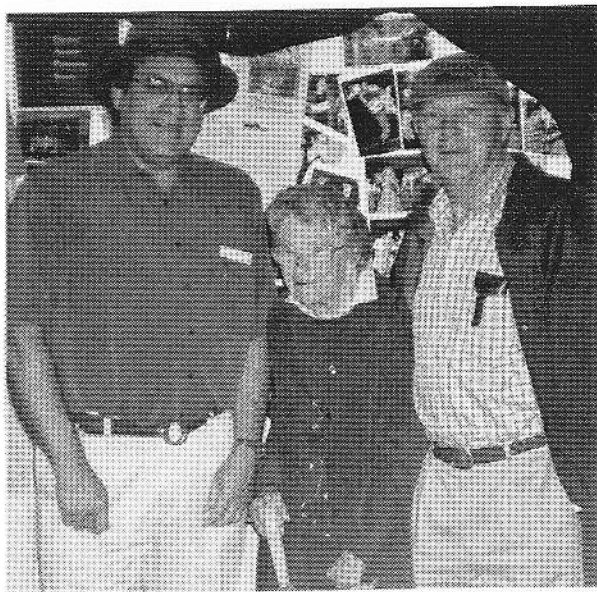
MEMBERSHIP FEES: Annual subscriptions due February each year. \$5. single \$10. family.



GRESFORD 175th ANNIVERSARY — OCTOBER 2005

What a great pleasure it was to be in the company once again of Mrs Hazel Hancock formerly of Gresford (now at Dungog). Hazel was for many years a district teacher, active community leader and a wonderful historian.

Our society staged a display in the local showground hall and naturally the theme was Gresford, in particular artifacts given to the society by Hazel before she moved into her retirement village. To our delight, Hazel and her son Allan, Principal of Maitland TAFE visited our display. They spent some time with us, Hazel and treasurer Shirley explaining to visitors the uses of domestic articles.



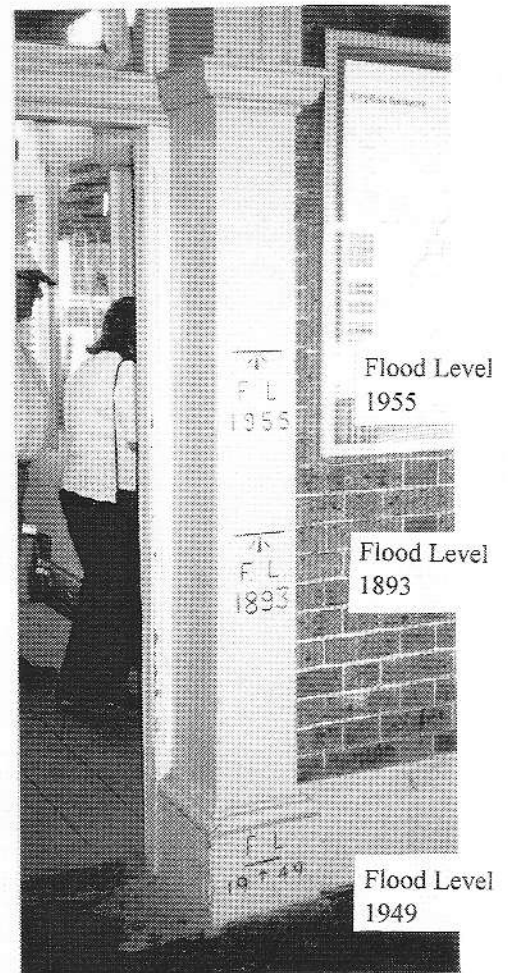
Cameron Archer
Hazel Hancock and
Allan Hancock

Photo: Bill Anderson



**MAITLAND
FLOOD LEVELS
1893 – 1949 - 1955
MAITLAND
RAILWAY
STATION**

Photo: Bill Andersonⁿ



HARRY BOYLE OAM

1919-2005

(Extracts from Cameron Archer's tribute to Harry Boyle OAM in *The Maitland Mercury* – 2 December 2005)

Harry Boyle has been an inspiration and mentor to us all and he will be sadly missed. Everyone loved Harry and respected him for his amazing grasp of the history of Maitland but also the wider history of the world and civilisation.

Harry generously shared his research with a wide variety of people and this helped us all further understand the history of this area.

We at Tocal and Paterson Historical Society would not have the marvellous range of publications about this area, its history and people without the influence and inspiration of Harry Boyle.

Maitland has lost one of its true companions and we have all lost a good friend.

We are, however, left with an enduring legacy of historical research and interpretation which will serve us into the future.

Thank you Harry.

Cameron Archer

Principal, CB Alexander Agricultural College –
Tocal and President, Paterson Historical Society Inc

(The development and success of the Paterson Court House Museum and "Museum News" could not have been achieved without the enormous input of Harry Boyle – Ed)



HARRY'S 80th BIRTHDAY — 6 May, 1999

PATERSON COURT HOUSE MUSEUM

Standing: Val Anderson – Kathy Lyall – Mabs Keppie – Esme Meehan – Val Webeck – Pam Sivyer

Seated: Pauline Clements – Our Harry – Mary Dunlop

Photo: Bill Anderson



KING TOM'S GRAVESITE — BOLWARRA

In 1997, on one of our outings, our dear friend, Harry Boyle took our society executive to the little known gravesite of King Tom, a local aborigine. The gravestone inscription reads:

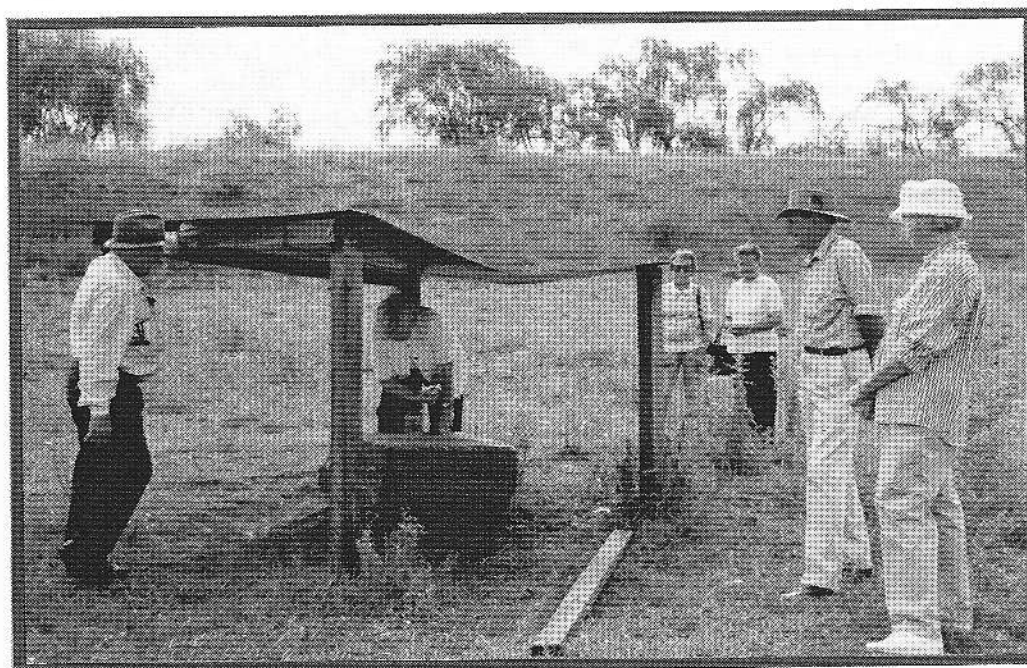
KING TOM
DIED
DECEMBER
1875

As well as this Harry wanted us to view the possible removal of an earlier inscription which may have related to the burial site of Jackey Jackey, the Singleton aborigine who accompanied Edmund Kennedy on his ill-fated expedition to Cape York in 1848.

We returned again in 2000 for member Jack Sullivan to photograph the site and record dimensions of the stone for his forthcoming publication on Jackey Jackey. In Jack's opinion, there is no evidence to dispute the burial of Tom (described as King of the Dunmore Tribe) on the site, given the proximity of it to the estate of Andrew Lang of Dunmore. Tom was a formidable figure and the local population was said to have been terrified of him. (It is possible that by today's standards he would have been considered just a "character.") Other published references to the site being that of Jackey Jackey cannot be discarded and debate remains.

Further Reading — "A Fortunate Liaison – Dr Adoniah Vallack & Jackey Jackey" – Jack Sullivan.

King Tom's Gravesite – Bolwarra – 1997



Harry Boyle OAM – Val Anderson – Mabs Keppie – Shirley Threlfo – Bill Keppie – Cynthia Hunter
Photo: Bill Anderson



Local Aboriginal Place Name – Jack Sullivan

MINDARIBBA: (Locality between Morpeth and Maitland)
The place of the winding or twisting stream.

King Tom to E.C. Close recorded in "Morpeth & I" – Prof A.P. Elkin.

PATERSON

Maitland Mercury 7 March 1903 — Kay Ingle

A very handsome villa residence has just been completed in the northern end of the town for Mr. J. A. Smith. The house, "Valentia," which is built on a considerable elevation, commands a beautiful view on every hand. It contains some very spacious rooms, finished with artistically coloured steel ceilings, and the airiness in the way of ventilators is a notable feature of the whole building. The front entrance is a nice bit of work completed in quite city style, and a wide verandah surrounding the house gives it a delightful, cool, shady appearance. Mr. Scobie was the architect, and Mr. Hipwell the contractor for the building, and the erection is a very nice piece of work.



Watercolour painting of "Valentia" Paterson c. 1840

Courtesy of Lake Glenbawn State Park Museum.

Museum Details (on back): "The home of Liet Bedwell R.N. – Paterson. The painting is dated about 1840"

This is thought to be the first home built on "Valentia."

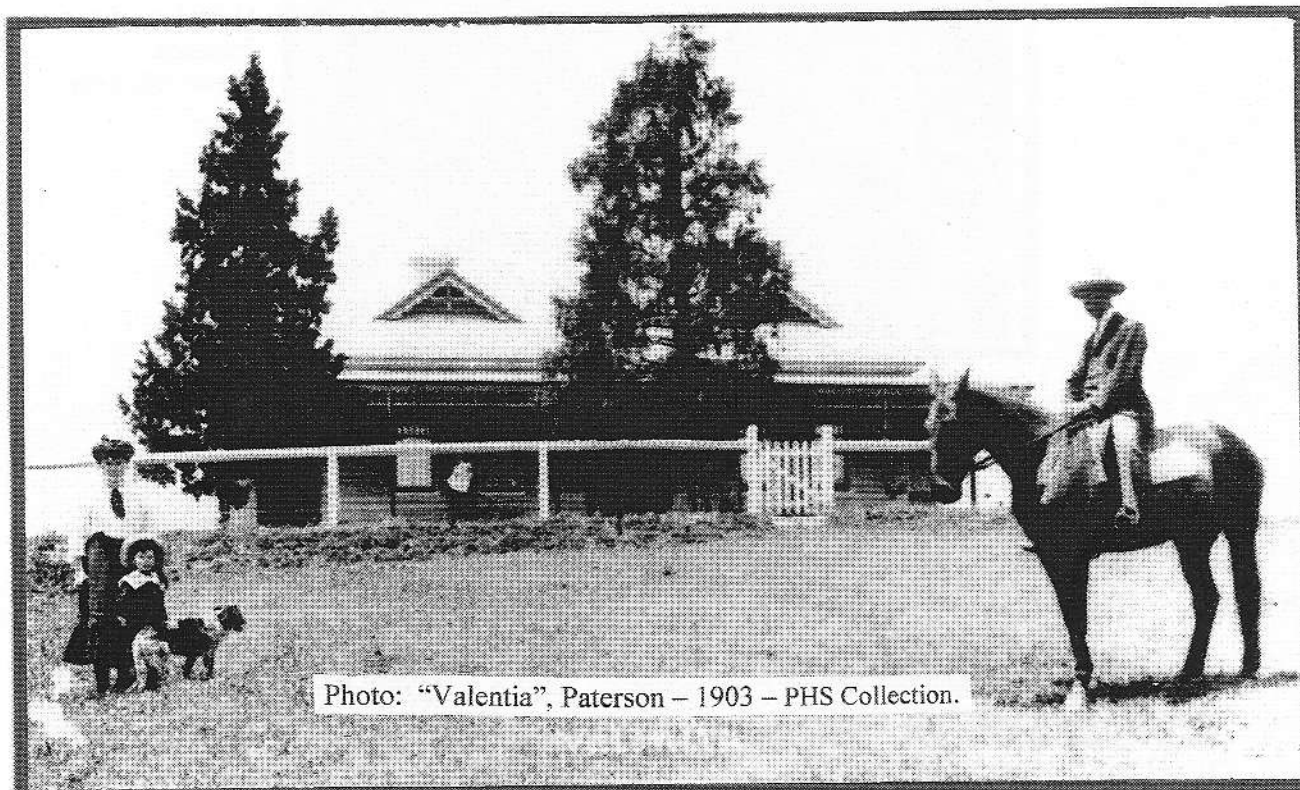
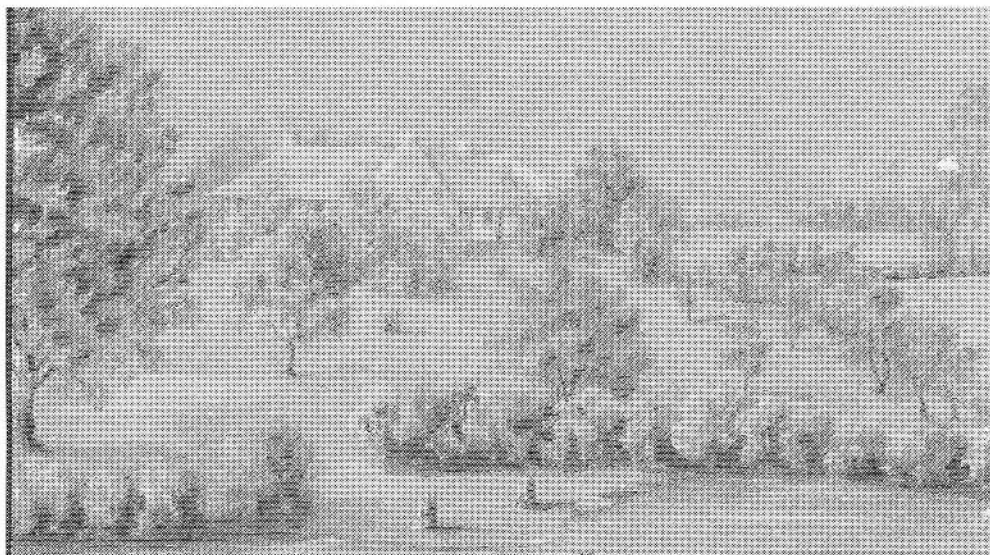


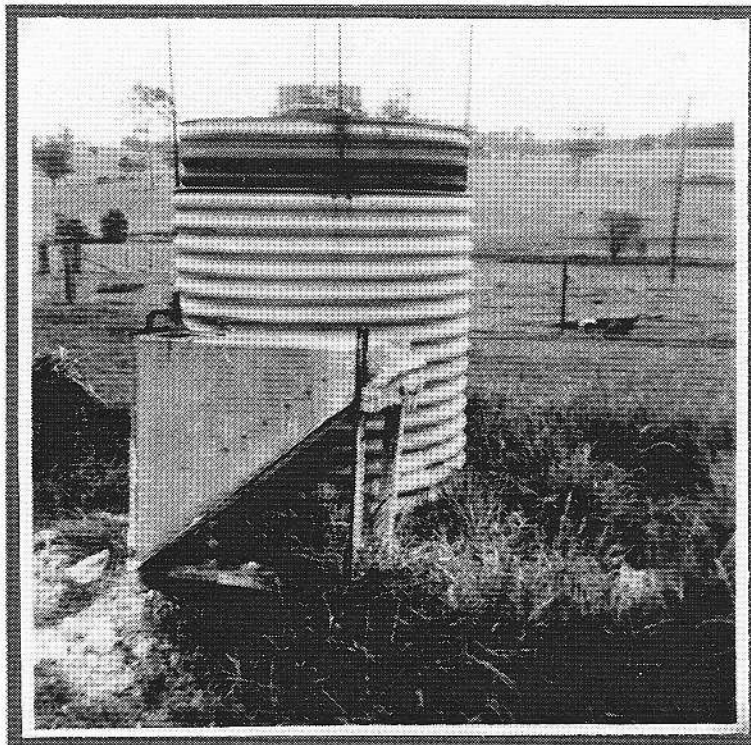
Photo: "Valentia", Paterson – 1903 – PHS Collection.

Let there be light for the Keppies of “Glenlossie”, Paterson — Bill Anderson

A gas generator and gas lamps were utilised in the School of Arts Hall, King Street, Paterson until 1931 when electricity was connected. The generator and lamps were then transferred to the Keppie’s property at “Glenlossie” on Martins Creek Road, Paterson and used there from 1931 until 1962 when the electricity supply came across the river to the Martins Creek Road area of Paterson from “Tillimby.”

General installation at “Glenlossie”.

- The carbide gas generation unit is adjacent to the gas holding tank as seen in the photograph below
- Two to three chunks of carbide about 50 mm cube was sufficient when combined with water to produce sufficient gas to illuminate “Glenlossie” daily.
- The system was simple and very satisfactory.
- The gas chamber (i.e. the inner tank) floated on water, held by the outer tank and as the gas charged the gas chamber it raised automatically following four guide rails.
- Additional gas pressure was achieved with extra weight on top of the gas chamber. Bill’s weight was actually a grain grinding stone — how’s that for resourcefulness?
- Carbide was purchased in 1 cwt drums (approx. 50 kg).
- The gas was piped from the gas chamber to inside the ceiling of the house with service junctions to each of the rooms where the gas lamps provide adequate glowing light.



Gas lighting unit at
“Glenlossie”,
Paterson.
Photo: Bill Keppie



Congratulations to Clarence Town and District Historical Museum (former Court House) on its “New Look.”

Beautifully restored inside and out, plans are well in hand to reopen the museum on a regular basis in the near future.