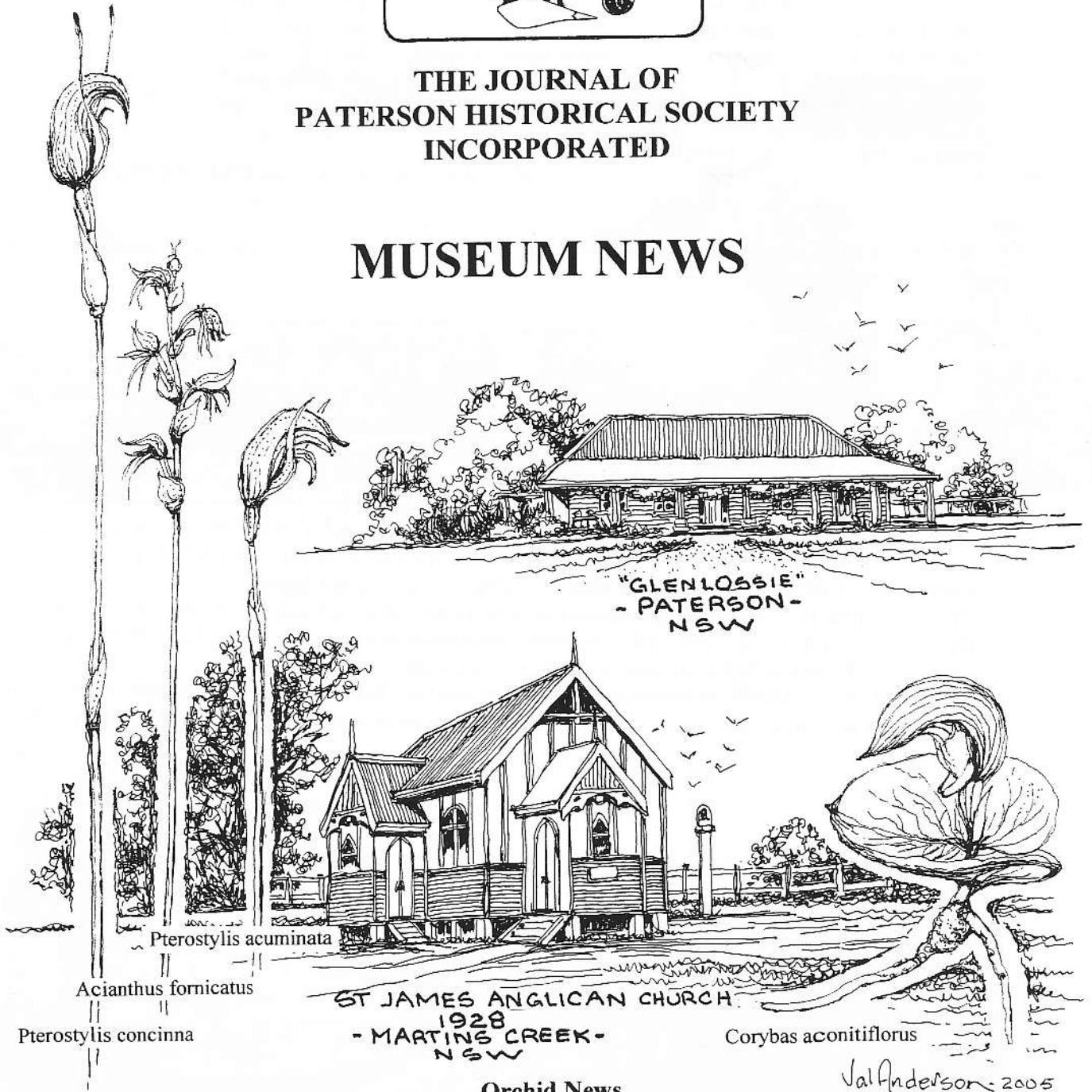


THE JOURNAL OF  
PATERSON HISTORICAL SOCIETY  
INCORPORATED

MUSEUM NEWS



Orchid News

At the June meeting MABS KEPPIE tabled a delightful posy of currently flowering native orchids gathered from her property, "Glenlossie" – Paterson.

Val Anderson - 2005

THE AIM OF THE PATERSON COURT HOUSE MUSEUM  
IS TO HOLD ITEMS IN TRUST  
FOR THE PATERSON COMMUNITY  
THE HUNTER VALLEY AND AUSTRALIA

VOLUME 12 # 4

ISSN 1321 4438

OCTOBER, 2005.

Affiliated with:

Royal Australian Historical Society

Museums Australia – Hunter Chapter

RURAL MUSEUMS

are a reflection of their community's identity

**PATERSON HISTORICAL SOCIETY INC. EXECUTIVE 2005**

**AFFILIATED** with Royal Australian Historical Society Inc. and Museums Australia Inc.

**PRESIDENT:** Cameron Archer

**SECRETARY:** Pauline Clements

**ASS. SECRETARY:** Pam Sivyer

**TREASURER:** Shirley Threlfo

**VICE PRESIDENT:** Kathy Lyall

**JOURNAL:** Pauline Clements, Val Anderson & Shirley Threlfo

**MUSEUM CURATORS:** Val Anderson & Bill Keppie

**PROJECT COORDINATOR:** Bill Anderson

**RECORDER:** Mabs Keppie and Shirley Threlfo

**PUBLIC OFFICER:** Cameron Archer

**RESEARCH COMMITTEE:** P Clements, S Threlfo, M & B Keppie, H Boyle OAM, J Sullivan, C Archer, V Anderson.

**PATRONS**

Mr. M Morris OA

Mr. R Baldwin MP

Mr. J Price MP

Mr. S Lowe AM

Mr. G Semken

Mr. A Fairhall

**MEETINGS PHSI** meets the first Thursday of each month – 7.30 pm. – at the Paterson Court House Museum (Recess December/January)

**MEMBERSHIP FEES:** Annual subscriptions due February each year. \$5. single \$10. family.



**THE MAGIC OF OLD PHOTOGRAPHS – FINDING THE WESLEYAN CHAPEL!**

Our executive has commenced re-cataloguing the society's photographs of early Paterson. Comparatively small in number, the nucleus of the collection was formulated by Pauline Clements who went "door-knocking" when the society was formed in 1974. Since then more photos have been donated by descendants of pioneer families, supportive researchers and visitors who come to the museum.

Our earliest images of Paterson were boosted last year when member Jack Sullivan was given access to two remarkable photos of c1860s Paterson. A wonderful source of information not previously known was revealed in particular the exact location of the elusive Wesleyan Chapel.

For some time the society has been aware of the existence of the Chapel – but where was it? When was it built etc.? Keith Jordan remembers his forebears making references to a small rise on his property on Commercial Road which was thought to be the Chapel's site.

Jack and Shirley Threlfo (who has commenced researching the Commercial Road area) have combined their talents with great enthusiasm in the hope of bringing some conclusion to our unanswered questions.

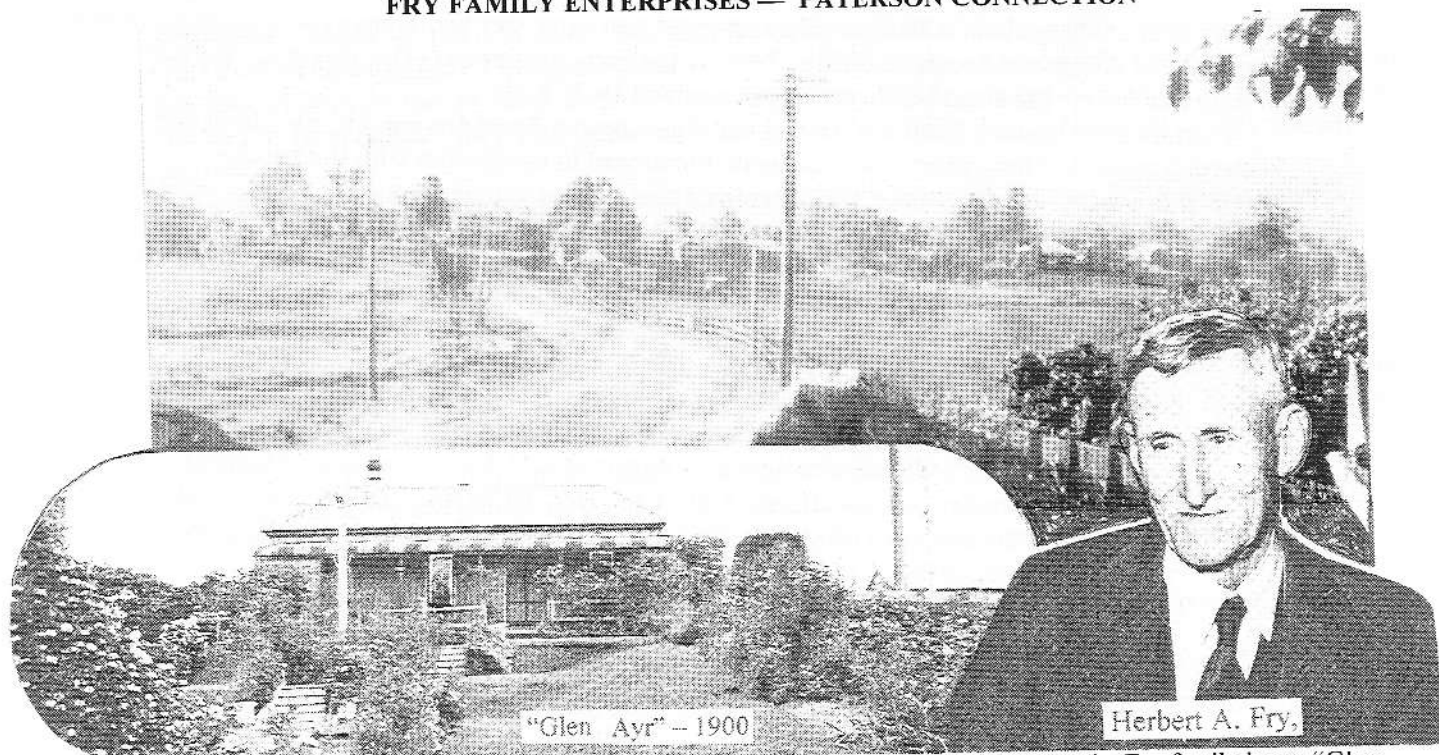


Photo: c1860s view of the Commercial Road area from St Ann's Presbyterian Church  
Photo: Jack Sullivan collection.



Bill and Mabs Keppie have commenced their selection of the society's photographic collection for the first of a series on EARLY PHOTOGRAPHS of Paterson. This series will be edited by Cameron Archer.

**FRY FAMILY ENTERPRISES — PATERSON CONNECTION**



The above photo is one of the few available of the Fry family business complex from the Fry family home "Glen Ayr" – 1900 at the entrance to Paterson and the Dungog Shire.

For some time now the society, in particular members Cameron Archer and Bill Anderson have been working extremely hard to retain two of the few remaining significant relics of the prominent Fry family business in Paterson - the HEARSE SHED and CORN STADDLE in John Tucker Park. They represent a bygone era when Paterson was the centre of activity and commerce for the Paterson Valley.

An extract from the Maitland Mercury in 1960 in a letter written by Miss D.M. Fry, daughter of Herbert A. Fry gives more insight into this remarkable family.

Sir,—My attention was drawn to an article on April 16 re the early coaching days.

I am a daughter of the late Herbert A. Fry, of Paterson, so I may be able to give you a little more information you require.

The Fry family had the coaches and Royal Mail contracts from Maitland to Dungog for many years. Henry Fry had them from 1878 to 1894, the year he died. His son, Herbert Fry, then took on the business.

Prest and Chamberlain had the mail contract from 1894 to 1896. H.A. Fry regained it and had it without interference until 1911 when the railway came to Dungog.

Your writer asks:-Where did they change horses? Callaghan's, that was where the horse stables were, I do not remember hearing of Johnson's Paddock, but it could have been used as a grass paddock for the horses.

Jim Brereton was a driver, also Sammy Marsh, Tom and Amos Arnold, and Jim Kelly. The Oakley family, of Dungog, were also among the drivers who drove for the Fry Family. Tom Arnold was the last driver on the coach to Dungog before the train came on August 14, 1911.

The Dungog people gave him a presentation of a very nice gold watch in appreciation of his services. There were many other well-known drivers, but these men mentioned were mostly associated with the Dungog run.

Mr. Fry had as many as twelve drivers employed and sixty horses were required as he also had the mail to Gresford and Allynbrook, and a day coach from Paterson to Maitland, return every day with the exception of Sunday.

He had the contract for conveyance of commercial travellers and samples, as far afield as Kempsey and Cassilis. A permanent blacksmith, Walter Barling, and others, and also a coachbuilder and painter were employed to keep the vehicles in good running order.

Richard Fry married Miss Mary Callaghan, sister of Mr. Paddy Callaghan, who was a saddler in Dungog. She only died last year, living to the age of 91 years.

From Maitland the coaches left the Post Office before midnight, changed horses at Paterson and arrived in Dungog about 6.30 a.m. They returned that same day and thence on to Maitland with a change of driver and horses, to arrive there in the early afternoon. The driver on the last coach from Paterson to Maitland before the train came was Daily Kidd.

I am inclined to think Sheriden's Hotel may have been a depot for parcels, etc., to be left, also a starting place, as I have often heard the name mentioned in connection with the coaches.

In those early days, whether heat wave or floods, it was most important for the mails to get through on time. If not it entailed a written explanation, or could be a fine of £5.

I have the first railway ticket issued from Paterson to Dungog, also the first ticket from Paterson to Maitland. — Yours faithfully, (Miss) D.M. FRY  
*Dungog Chronicle* 7 May 1960



1883 — Increase in fares due to price increase in horse feed.

**ROYAL MAIL NOTICE.**

FRY & CO.'S COACHES LEAVE WEST MAITLAND, via East Maitland, DAILY (Sunday excepted), at 8.45 a.m., for DUNGOG, GRESFORD, and PATERSON; and on TUESDAY, THURSDAY, and SATURDAY, for HINTON, SEAHAM, CLARENCE TOWN, and BROOKFIELD.  
 BOOKING OFFICE —

**Bourke-street, West Maitland.**

In consequence of the high rate of Horse Feed, the FARES WILL BE AS UNDER until further notice:-

Maitland to Dungog.....	7s. 6d.
“ “ Gresford.....	5s.
“ “ Clarence Town .....	5s.
“ “ Paterson.....	2s. 6d.

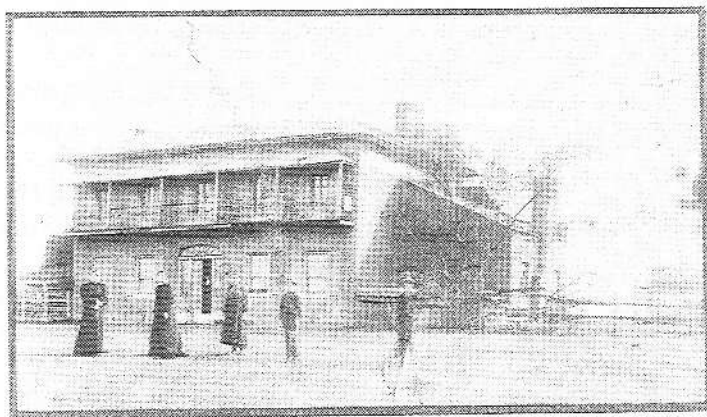
FRY & CO.,  
 Bourke-street,  
 West Maitland.

*Maitland Mercury*, 1883 – John Dickson, Paterson.

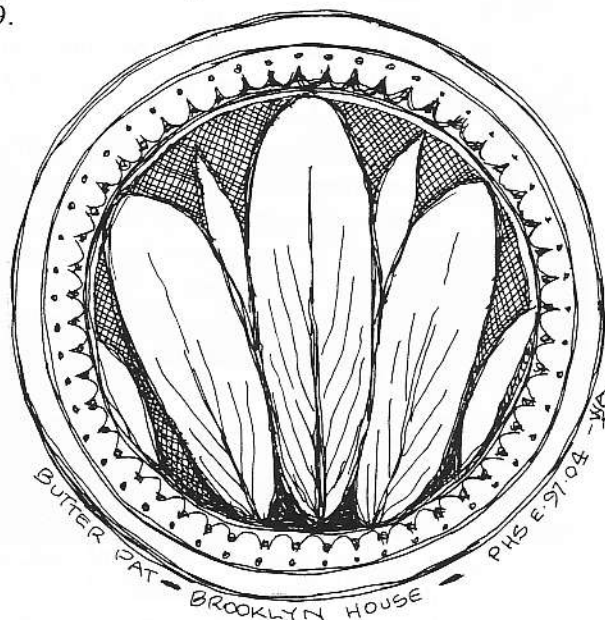


**MUSEUM ACCESSIONS**

BUTTER PAT and WALKING STICK associated with the Keppie Family from Ann and Peter Boyce of Chipping North. The butter pat was used at Brooklyn House during a boarding house period. The walking stick was used by Andrew Keppie, 1849 – 1929.



- BROOKLYN HOUSE -



*Maitland Mercury* 21 May 1868 – Cynthia Hunter



THE FLATS IN THE PATERSON RIVER.—The steamer Bolwarra on her trip from Morpeth to here last Tuesday morning, stuck on the flats near Ogg Island, and was detained there for five hours, before she could get off.

**MAJOR DONATION — CREMATION CHARGING TROLLEYS**

Society executive has accepted the donation of two charging trolleys from Newcastle Crematorium, Beresfield. Made in 1981 by K.H. England, Macquarie Road, Warners Bay, they were used at the crematorium between May 1981 and February 2005 – 56200 charges between the two dates. Possibly the last two trolleys in use in New South Wales (redundant due to process upgrading at Beresfield and doomed to be scrapped) they were reluctantly refused by the Powerhouse Museum as they already had one trolley.

Collected by Bill Anderson assisted by Phil Lockett (NCB employee) 27 June 2005, the trolleys will be stored at Anderson's property with possible future use in the Hearse Shed!



**EXTRACTS FROM DR BOWKER'S DIARY –1869-87**

Dr Bowker was the son-in-law of James Phillips of "Bona Vista", Paterson and following the death of the widow of James Phillips he purchased the property and built the present homestead in 1876. Dr Bowker was a well known Doctor of medicine in Newcastle and a member of state parliament.(ST)

1869 May 28, Building instructions, And I paid Maddams for the child's coffin.

May 31, Corn and pumpkins got at Bona Vista.

May 7, 31½ bushels and 7 lbs damaged corn at 1/9, 21 dozen pumpkins at 1/6 from John Clements.

54 bushels and 22 lb corn at 2/0 from Will. Radcliffe says his consumption of good corn is 15 lb a day.

Rain/wind.

1876 Mar 5 Have had a long drought. At Paterson – slight shower, trees dead, fowls and pigs dead, no oranges.

Apr 15 Osmond goes to Bona Vista today Wednesday. Wife not go yet.

Sept 7 Osmond reports more stock dead of 'disease' but maybe starved in drought.

1878 Feb 6 Rain heavy

Oct 29 My beloved Lydia leaves me –dies. She first had the mumps which she got from Ida Phillips at Bona Vista then Erysipelas of the leg. Then overworked herself, got Typhoid complicated with perforation and children all had mumps. I think only Isabel had scarlet fever (long ago).

1879 Jan 2 Cedric and Edward have whooping cough caught at Bona Vista

1887 Aug 29 Saw what I thought a seal in Tocal lagoon. The ground very splashy so that it might have been tempted from its lair.



Source: Banks Papers - Harry Boyle OAM

**WILLOWS ARRIVE IN AUSTRALIA**

George Suttor to Sir Joseph Banks NSW 28 December 1800

Sir,

In obedience to your commands, I do myself the honor of writing to you on account of what plants I have been able to take alive to NSW:- 1 olive, 6 apples, 2 black mulberrys, 6 white mulberrys, 4 willows, 18 Chily strawberries, 2 walnuts, 2 chesnuts (Spanish), 2 oaks, 4 pomgranites, 2 plantains, mint and the following sort of vines:- Tokay, White Fontinac, white Muscatdine, Black Fontinac, Constantia and Muscat of Alexandria.

It is with painful concern I inform you sir, that I have not been able to bring the hops and many other valuable plants I had on board. Many a day and night have I spent of anxious solitude on account of my garden; but all my anxiety and concern were in vain under the disadvantages the garden was situated, so constantly exposed, from the smallness of the ship, to the washing of the sea, and other circumstances that tended so much to their hurt; indeed I now do and ever shall regret that it was not more successful. As they have hops at the Cape, I have great hope we shall soon receive some from thence. Mr Barrow assured me that we depend upon their being sent.

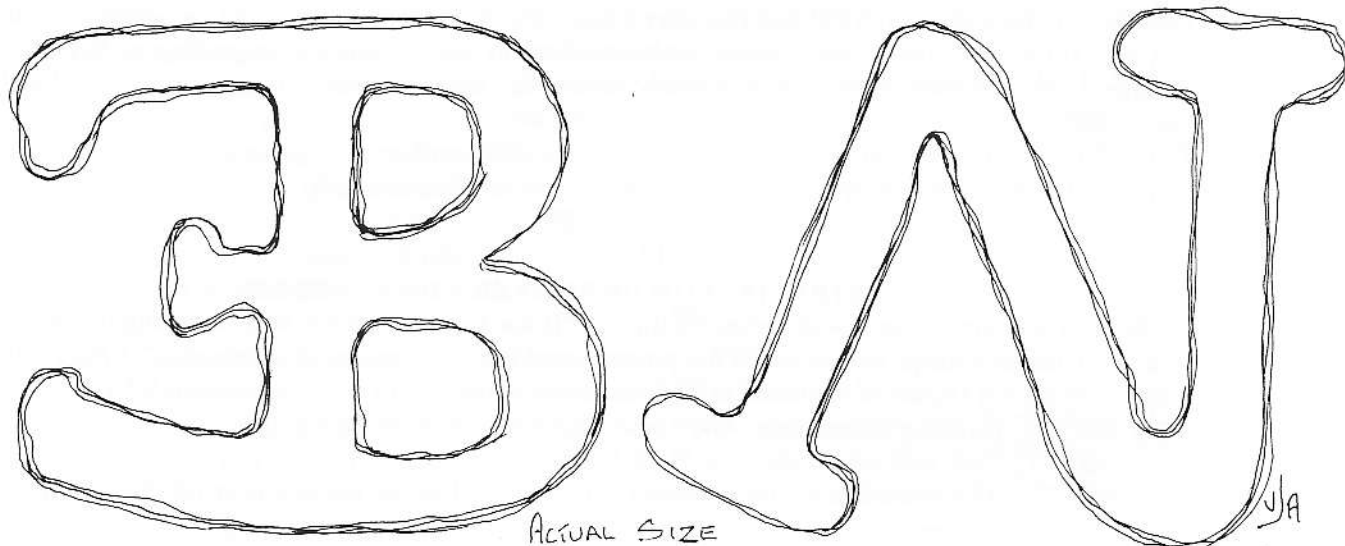
Mr. Scott was induced to behave something better to us during the remainder of our voyage, through the kind interference of sir Roger Curtis in our behalf at the Cape.

I sincerely hope, yourself sir, and Lady Banks are in good health, also Mrs. Banks, Mr and Mrs Anfriere

I am, etc.,  
Geo Suttor.

P.S. I have taken the liberty, Sir, of enclosing letters to my friends; beg of you to forward them.

**TILLIMBY BRANDING IRONS** – from John Priestley “Tillimby”, Paterson



J.H. Boughton Period – 1822

Nivison Period -1859

**“The Settlement of the Paterson District”**

*Tillimby* – Paterson – Cameron Archer.

J.H. Boughton and his wife Charlotte arrived in Sydney on the *Fame*, 12 September 1822. He subsequently received a land grant of 2000 acres, in two portions, on 12 October 1822. The grant was north of *Cintra* and was to become *Tillimby*.

*Tillimby* was later owned by A.W. Nivison from 1859 until it was purchased by G. Priestley of *Gostwyck* in the late 1920s. Descendants of George Priestley are current owners – the homestead was demolished in 1946 – ruins of the servants’ quarters remain.



**PREMIER’S COMMUNITY SERVICE AWARDS TO SOCIETY MEMBERS**

A small number of Community Service Awards are allocated each year by the Premier and this year, Bill and Val Anderson were recipients for their work in the community, particularly associated with the Paterson Historical Society.

Bill and Val have been stalwarts for the society for many years, Val working as honorary curator and Bill working on many projects particularly conservation of the building and other resources in the town.



Bill and Val Anderson with the Hon John Price, Member for Maitland, following the presentation of the Premier’s Community Service Award. Photo: Elizabeth Price

*Dungog Chronicle*, 13 April 2005