



THE JOURNAL OF
PATERSON HISTORICAL SOCIETY
INCORPORATED

MUSEUM NEWS



LIFE MEMBERSHIP
PATERSON HISTORICAL SOCIETY INC.
MARY & MAURICE DUNLOP - 2002
CAMERON ARCHER - 1995.

THE AIM OF THE PATERSON COURT HOUSE MUSEUM
IS TO HOLD ITEMS IN TRUST
FOR THE PATERSON COMMUNITY
THE HUNTER VALLEY AND AUSTRALIA

VOLUME 9 #2

ISSN 1321 4438

APRIL, 2002.

PATERSON HISTORICAL SOCIETY INC. EXECUTIVE 2002

AFFILIATED with Royal Australian Historical Society Inc. and
Museums Australia Inc.

PRESIDENT: Cameron Archer

SECRETARY: Pauline Clements

ASS. SECRETARY: Pam Sivyver

TREASURER: Shirley Threlfo

VICE PRESIDENT: Maurice Dunlop

JOURNAL: Pauline Clements, Val Anderson & Shirley Threlfo

MUSEUM CURATORS: Val Anderson & Bill Keppie

PROJECT COORDINATOR: Bill Anderson

RECORDER: Mabs Keppie

SURVEILLANCE OFFICER: Phillip Leak

PUBLIC OFFICER: Cameron Archer

RESEARCH COMMITTEE: P. Clements, S. Threlfo, M. & B. Keppie

B. Brown, H. Boyle OAM, J. Sullivan, C. Archer, V. Anderson.

PATRONS

Mr. M. Morris OA

Mr. R. Baldwin MP

Mr. J. Price MP

Mr. S. Lowe

Mr. G. Semken

Mr. A. Fairhall.

MEETINGS PHSI meets the first Thursday of each month - 7.30 pm. - at the Paterson Court House Museum (Recess December/January)

MEMBERSHIP FEES: Annual subscriptions due February each year.
Family \$5. Single \$3. Student \$1.

LIFE MEMBERSHIPS PRESENTED

- ❖ Longtime executives, Mary and Maurice Dunlop were elevated to Life Membership at the Society's A.G.M. in February. When making the presentation, President Cameron outlined the many supportive ways Mary and Maurice contribute to Paterson Historical Society and Paterson.

"SENSE OF PLACE "

- ❖ The Combined Museums Travelling Exhibition is now at the Tocal Visitors Centre. Together with Tocal Foundation and Morpeth Museum, our society is hosting this well presented group of individual displays from Hunter Valley Museums and Galleries. This is a wonderful opportunity for our museum to be seen away from the Paterson district.

ANNUAL HERITAGE ADDRESS.

- ❖ The 2002 Heritage Address was presented by secretary, Pauline at our April meeting. Pauline's chosen heritage subject was "The History of Vacy", a long-overdue topic. Pauline also spoke of her continuing research into the Flood Boat originally offered to the museum but which will now return to its place of origin, Millers Forest.

ANNUAL HERITAGE WALK.

- ❖ Our society held the Heritage Walk on the weekend of this year's inaugural Dungog Shire Autumn Festival weekend in March. Thanks to President Cameron, who each year draws a good following and always has such a wealth of knowledge and anecdotes to pass on to visitors about our locality and Australian history. A special museum display was a medical instrument collection donated by Dr. Hyde of Gresford used in the district in the 1950s, and a new display in the accessions cabinet of recent donations. (Thanks to Kathy Lyall for her tennis club urn, her school's drink dispenser etc. and her energy.)

DISTRICT CONFERENCE & GRESFORD WORKSHOP

- ❖ Barb Brown and Val & Bill Anderson attended the District Conference at Lake Macquarie in March. Bill Anderson represented at the RAHS Regional Grant Funding Workshop at Gresford in April

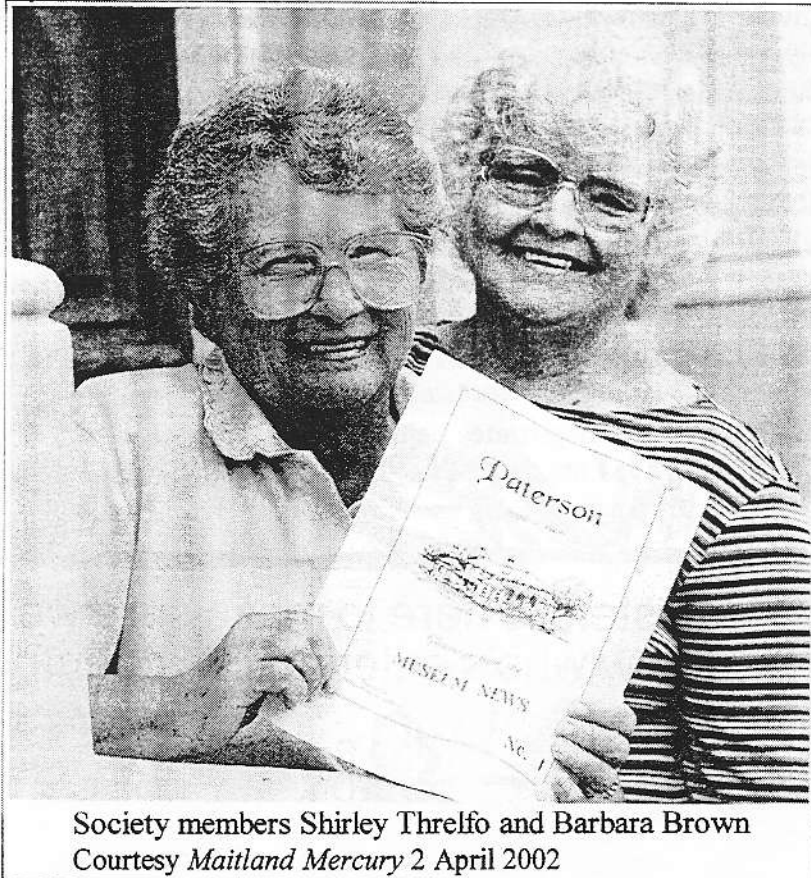
REGIONAL MUSEUM OFFICER'S VISIT

- ❖ Our Society had the pleasure of finally meeting the Newcastle Regional Museum's newly appointed Regional Museum Director, Maggi Solly when she visited Paterson in March. Following a visit to Tocal Homestead, a tour of the district and a delicious meal at member Pam Sivyver's property, (cattle herd an' all!). Maggi attended the Society's March meeting and helped celebrate Mary Dunlop's birthday.

- ❖ **PLEASE NOTE:** The May social outing has been deferred until later in the year

TOCAL FAMILY HISTORY FAIR

- ❖ The second Tocal Family History Fair this year was most successful. Our society staged an excellent display of local history publications and treasurer Shirley was smiling at the end of a very busy day. We are fortunate to have Cessnock family history researcher, Barb Brown as an active member. Barb and Shirley have worked closely to produce the first of a new series of booklets on the Paterson district. "Paterson Gleanings from the Museum News" No. 1 is the forerunner of articles collected from the society's quarterly "Museum News" journal and was well received when first on sale at Tocal Family History Fair. (It seems that distance is no object to Shirley and Barb. To begin with, their selections crossed by mail, visits and "what do you think" phone calls. The typed drafts were delivered to Barb's sister's letterbox at Largs by Shirley on her way to bowls at Lorn. Jenny would get them to Barb and return them to her letterbox, or behind the pot plant on the verandah for Shirley to collect. It all worked well, commented Barb, and Shirley assures us that "through the farms" was not out of the way at all! Just a few country miles?)



Society members Shirley Threlfo and Barbara Brown
Courtesy *Maitland Mercury* 2 April 2002

SPECIAL THANKS TO

- ❖ Mabs & Bill Keppie for hosting the Sydney Telegraph tourism journalist at the Museum - Pauline for hosting Vacy School at the Museum, St. Paul's Church and graveyard (and for her talk on Cooma at the A.G.M.) - Dungog Shire Council for their preparation of museum's grounds for Annual Heritage Walk. - our obliging members who manned the "Sense of Place" and Tocal Family History Fair and early museum opening - Olga Marquet and Jack Sullivan, our specialist historians who gave so freely of their knowledge at the Fair stall - Pam Sivyer who gave support at the opening of beautiful Duninald Homestead and this time to Shirley's letterbox which works overtime when we are putting a "Museum News" together.

CASH DONATION.

- ❖ Special thanks to Dot Rogers of IGA Supermarket, Paterson for her \$50 cash donation to Society funds.



.1846 - PATERSON ROAD - TOCAL BRIDGE - Harry Boyle OAM

Mr. Windeyer presented a petition from the landholders and inhabitants of the district of Paterson praying the erection of a bridge over Tocal Creek for facilitation the traffic between the Paterson, Williams River, Stroud and surrounding districts. Petition read and received.

SLICE OF VALLEY'S HISTORY *Maitland Mercury* 16 August 1999

Paterson Court House closed in 1967 for court procedures and reopened in 1974 as a museum. Paterson Historical Society is the governing body of The Paterson Court House Museum.

Earlier this year the welcoming signs at each entrance of the town, donated and erected by the society in 1990, were cleaned, refurbished and lower signs replaced. Colours chosen at the time were colonial, pre 1850s and the logo, "First Land Grants - 1821" was felt to be appropriate by the society.

More recently, the original timber sign at the museum entrance was replaced with a modern sign to complement the colours used on the building when it was painted in 1993 to original 1860s colours.

Bill Keppie, society life member, had helped put up the original sign atop the plough at the entrance and was now giving a hand with its replacement 25 years later. "It was the late Stan Priestley's suggestion that we use a plough below the sign," Bill said. "I had a small one at the farm and it looked right at home when we put it up."

Bill felt sure the plough would have been made by one of the Keppie family who were prominent trades and business people in the developing years of Paterson. Bill had used the plough on his property, "Glenlossie" (on the outskirts of Paterson) as did his father Walter and grandfather, William. Peter and William Snr Keppie, who came to Paterson around 1840 won medallions at the Hunter River Agricultural shows in 1844 and 1845 for Best Scuffler and Best Plough. Bill's grandfather, William, won a medallion in 1874 for Best Plough.

The former entry area, used by magistrates before entering their chambers at the courthouse (now an annex to Dungog Shire Council library), has a fine collection of rural memorabilia on loan from the Keppie family. It includes farming tools used by these early pioneers. — Val Anderson (Paterson Historical Society)



Bill Keppie beside the newly refurbished Plough Sign - 1999

Photo: Bill Anderson.

Maitland Daily Mercury Anniversary Supplement 1933 - MRS KEPPIE

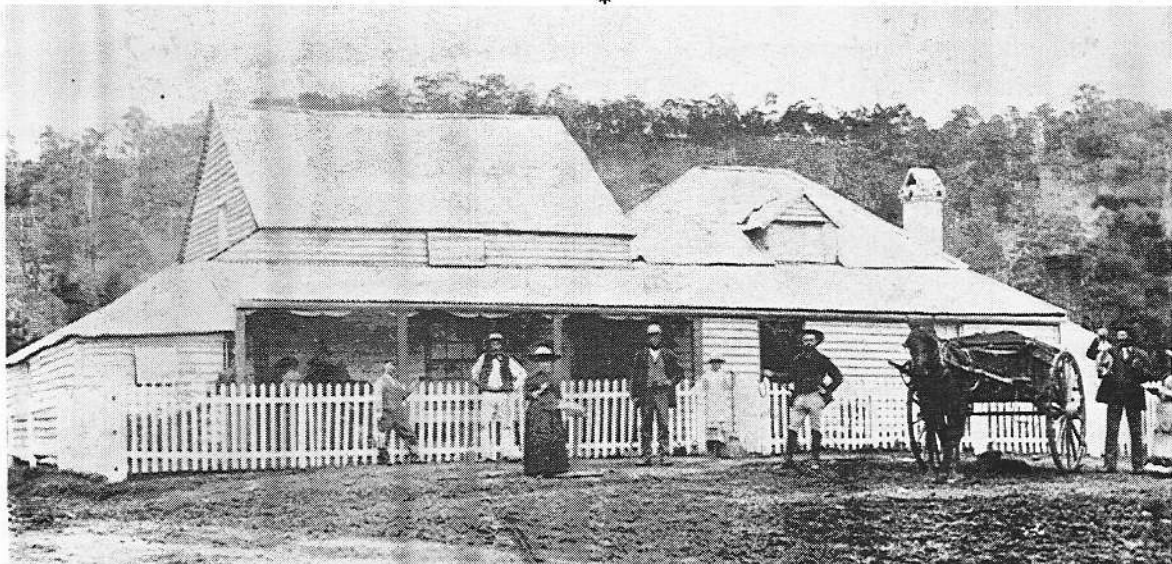
The first show of Hunter River Agricultural Society was held on Tuesday May 14th 1844 in the yards of the Albion Inn West Maitland a site now occupied by business premises opposite Galtons Ltd.

The Schedule and prize winners at the 1st show were as follows:

(1) Colonial Red Wine - no exhibit (2) Colonial white wine (no exhibit) (3) Wheat. Mrs. Schofield (4) Eng. Barley - Mrs. Turner (5) Maize C.M. Doyle (6) Leaf Tobacco (Colonial) 10 lbs. W. Holden (7) Colonial Cheese (50 lbs.) Messrs. Reynolds and Parnell (8) Firkin of butter (28 lbs.) W. Geddes (9) Colonial bred drought Stallion S. Clifts Young Farmer's Glory (10) Ditto brood Mare W. Holden's Gipsy (11) Ditto Hackney Stallion W. Nicholsons Harry Lorrequer (12) Ditto Hackney Mare Doyle Brothers Victorine (13) Colonial bred bull H. Danger (14) Ditto breeding cow H. Danger (15) Ditto five heifers E. Turner (16) Fat ox no exhibit (17) Fat cow H. Danger (18) 5 colonial bred Rams no exhibit (19) Ditto Ewes no exhibit (20) Colonial bred boar E. Turner (21) Ditto sow C.M. Doyle (22) Colonial made plough P. Keppie (23) Colonial made Harrow P. Keppie (24) To the farm servant male or female who had been the longest period with one master or mistress and who can produce the best testimonial as to Character John Carroll servant to C.M. Doyle (25) To the person who pays the greatest attention to the appearance and comfort of his cottage and garden no entry. To the winner in each class a silver medal was awarded.

FIRST PLOUGH ON NELSON'S PLAINS - Harry Boyle OAM

Jonas Foot, Pioneer settler, worked the first IRON PLOUGH at Nelson's Plains in the late 1820s. (Jonas Foot married Mary Arndell, daughter of Thomas Arndell who was surgeon to the First Fleet)



PLOUGH INN WINE SHOP - PATERSON
Photo: Society Files

PLOUGH INN WINE SHOP, PATERSON - Norman Hall, Toronto.

In his booklet, "The Settlement of the Paterson District", Cameron Archer includes a photograph of the Plough Inn by courtesy of W.L. Keppie, and quotes the inscription on the front "George Osmond Licensed to Sell Colonial Wines". (P. 37)

George Osmond was my maternal Great Grandfather. Born in 1831 he emigrated from Tentinhull, Somersetshire, in 1849 aboard the *Harbinger*, settling in the Paterson region. Elizabeth Baker, born in 1829, emigrated from Yeovil, Somersetshire, in 1851 in the company of Charles (George's brother) and Ann Osmond. Their voyage took six months aboard the *Kate*, a fully rigged clipper

operated by the British India Steamship Navigation Company. Along with Charles' seven children, they came straight to Paterson.

Married in 1852, George and Elizabeth spent the first part of their married life at *Gostwyck*, after which George was appointed manager of *Bona Vista* for Dr. R.R.S. Bowker, remaining in that position for 25 years until taking over the old Paterson wine shop and accommodation establishment, the "Plough Inn". (*Bona Vista* had been broken up as early as 1845.) In 1855 Usher Tinkler, my paternal grandmother's adopting father had purchased 500 acres and established *Portnahinch*

After nine years at the Plough Inn, they returned to *Bona Vista* from where they retired to live privately in High St. Paterson, opposite Crouch's Motor Garage.

George died on 2nd November, 1899, aged 68. Elizabeth's death did not come until 17th October, 1926 at the age of 96, she having outlived five of her eleven children.

When George's estate was being wound up the agents, Wilson and Keppie, advertised the auction of two homes:-

- (i) Very comfortable W.B. residence, 5 rooms, with frontage of 136 feet to High Road and running back to Paterson River. Recently occupied by the late Mrs. G. Osmond;
- (ii) Residence (opposite Crouch's Motor Garage) having frontage of 33 feet to High Road and running back to Paterson river. At present occupied by Mr. Thos. Smith as tenant.



KNOW YOUR TOWN - WHERE WAS THIS BUILDING?



Courtesy National Trust - Photo: C. Lucas 1967



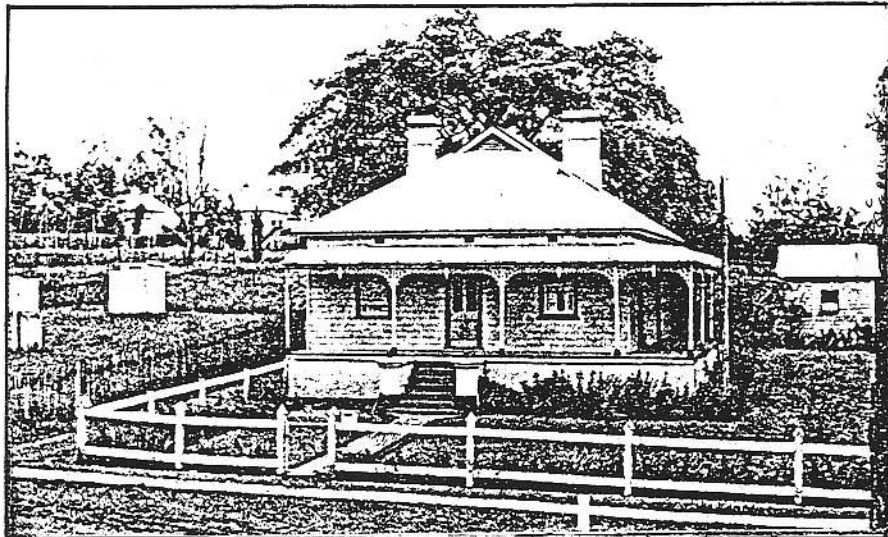
1846 - CHURCH OF ENGLAND BURIAL GROUND - Harry Boyle OAM

Mr. Windeyer presented a petition from proprietors of the township of Paterson stating that the burial ground of the Church of England had been consecrated in the centre of the township to the great detriment of their properties and praying protection from the loss they must sustain if such burial ground be used for the purpose of sepulchre. Petition read and received.

PATERSON

Mr. and Mrs. F. Wilson, of the Courthouse Hotel, after many years of proprietorship, with the record of a well-kept and most orderly house, have retired to their new residence, a commodious villa "Ernestville," in Princes-street. Mr. Alfred Wilson, son of the above, is now in charge of the business, and we trust he will maintain the worthy record of his parents in the management of the handsome Courthouse Hotel.

Maitland Mercury 31 October 1900



"ERNESTVILLE" - Courtesy National Trust Photo: C. Lucas 1967



1894 - "DISTINCT" KING STREET COTTAGE BUILT - Jack Sullivan

A very neat weatherboard six-roomed cottage has just been completed opposite the Commercial Bank by Messrs. Thompson and Cummins from plans prepared by Mr. C.W. Holmes, architect, West Maitland. The premises were built to the order of Mr. George Fry, and will be occupied by Mr. Tinson, cordial manufacturer. The residence consists of six rooms, with six feet wide verandahs on two sides and at the back, porticos on both sides, and enclosed with a neat palisading fence in front. In the rear of the premises are complete stabling, loft, coach house, two 2000-gallon iron tanks, etc., the stabling alone costing £80. The buildings altogether cost between £300 and £400. They are a distinct improvement to the appearance of our little town, and a credit to the architect and contractors, and Mr. Fry also is to be congratulated upon his enterprise. Paterson, Sept. 22.

Maitland Mercury 22 September 1894



1892 - MARTINS CREEK SCHOOL - Harry Boyle OAM

A new provisional school has recently been erected at Martins Creek about four miles from Paterson township. This school was a long felt want as it is too far for children to walk four miles to the nearest school.

Friday the 22nd is to be a gala day with the parents and children as they intend celebrating the opening of the school by a picnic in the day and a ball at night; the latter to raise funds for the purpose of securing a tank for the use of the children. The school will open for instructions on the 25th inst. The building reflects great credit on the contractors Messrs. J. Oldfield and A. Vogle.

Maitland Mercury 23 January 1892.



1873 BUILDING ON BONA VISTA ESTATE - Harry Boyle OAM

TENDERS Required for Quarrying and carting to Bona Vista, Paterson, Rubble Stone for Building a house. Quarry is about a mile from Bona Vista—Quarrying and carting either together or separate. Apply to DR. BOWKER, Newcastle

Maitland Mercury 28 October 1873

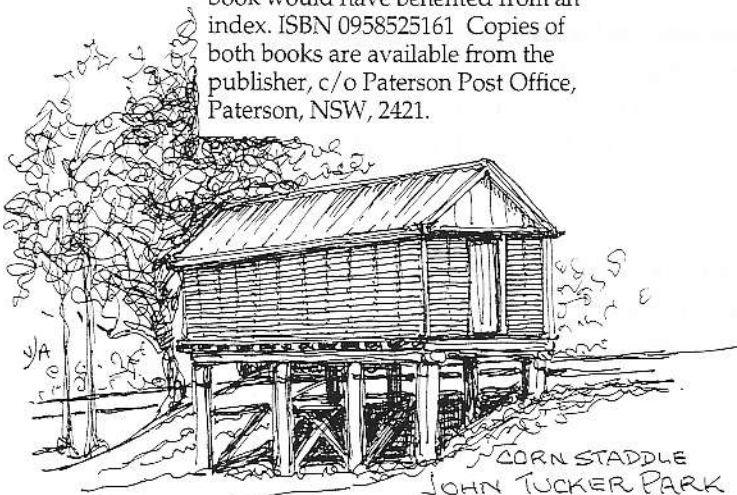


RAHS State Roundup
HISTORY March 2002

Australia's oldest Presbyterian Church?
St. Ann's Paterson by A. C. Archer, was published by **Paterson Historical Society**. This is the second edition (originally published in 1990) history of the church which was established in 1842 and the text is accompanied by many illustrations, an appendix and bibliography. The question mark in the title is due to the fact that Ebenezer Church, built in 1808-1809, is now a Uniting Church. The church at Kirklands in Tasmania, built in 1836, also became a Uniting Church but has only recently once again become Presbyterian! The 16pp book would have benefited from an index. Copies available from the publisher, c/o Paterson Post Office, Paterson, NSW, 2421. ISBN 0646013971



The Parks of Paterson was written by society member Pauline M. Clements. This publication outlines the history of John Tucker Park, Paterson's Bicentenary Park, Paterson Park, Paterson Sportsground and King's Wharf Park from their establishment and includes many photographs. In fact King's Wharf is the name of the unidentified wharf that featured on the cover of RAHS *History Magazine* No.68! 90pp with bibliography. The book would have benefited from an index. ISBN 0958525161 Copies of both books are available from the publisher, c/o Paterson Post Office, Paterson, NSW, 2421.



Paterson Historical Society situated in the Hunter Valley are prolific publishers of local history. *The First Fatal Election Paterson 1843* was compiled by members Barbara Brown and Shirley Threlfo. This interesting report has been compiled from the files of the *Maitland Mercury*. In the first issue of the paper, a 'manifesto' by one Andrew Lang, revealed that a bill was about to be introduced into the Legislative Council to constitute the County of Durham to be one of the electoral districts of the colony and that he, Andrew Lang, was announcing his candidature. From this opening, the book, with the aid of journal articles, official announcements and letters to the editor, traces the story of the candidates and the public's reaction to them, up to Election Day 1843 and its tragic aftermath. Fascinating! 33pp ISBN 0958525145. Copies available from the publisher.



Sacred Heart Church and Cemetery, Summer Hill, Paterson Valley by Kay Ingle is published by **Paterson Historical Society**. This book contains a short history of the area of Summer Hill in the Paterson Valley and its early Catholic settlers such as the Kealy and Clarke families who were instrumental in the establishment of the church, built in 1840 on land donated by Messrs. Kealy and Clarke. The book is well illustrated with images of headstones from the cemetery and some delightful sketches of the church furniture. 76 pp with index and bibliography. Copies available from the publisher, c/o Paterson Post Office, Paterson, NSW, 2421. ISBN 0958525137

