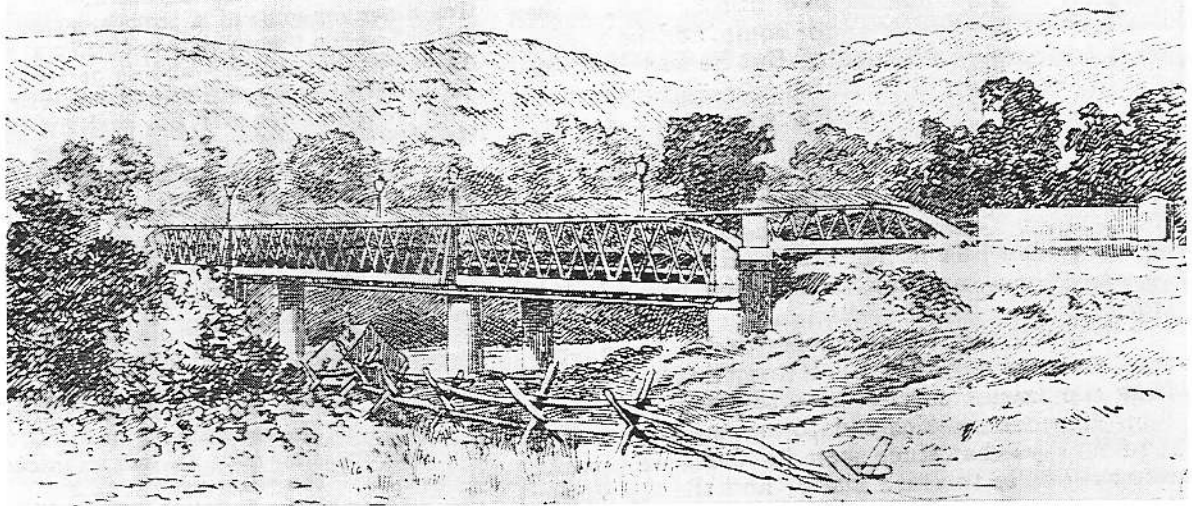




THE JOURNAL OF
PATERSON HISTORICAL SOCIETY
INCORPORATED

MUSEUM NEWS



Paterson Bridge to Morpeth
Courtesy: State Library of New South Wales
Town and Country Journal - 10th March, 1888.

Source: Jack Sullivan

THE AIM OF THE PATERSON COURT HOUSE MUSEUM
IS TO HOLD ITEMS IN TRUST
FOR THE PATERSON COMMUNITY
THE HUNTER VALLEY AND AUSTRALIA

VOLUME 9 # 1

ISSN 1321 4438

FEBRUARY, 2002.

PATERSON HISTORICAL SOCIETY INC. EXECUTIVE 2001

AFFILIATED with Royal Australian Historical Society Inc. and
Museums Australia Inc.

PRESIDENT: Cameron Archer

SECRETARY: Pauline Clements

ASS. SECRETARY: Pam Sivyver

TREASURER: Shirley Threlfo

VICE PRESIDENT: Maurice Dunlop

JOURNAL: Pauline Clements, Val Anderson & Shirley Threlfo

MUSEUM CURATORS: Val Anderson & Bill Keppie

PROJECT COORDINATOR: Bill Anderson

RECORDER: Mabs Keppie

SURVEILLANCE OFFICER: Phillip Leak

PUBLIC OFFICER: Cameron Archer

RESEARCH COMMITTEE: P. Clements, S. Threlfo, M. & B. Keppie

B. Brown, H. Boyle OAM, J. Sullivan, C. Archer, V. Anderson.

PATRONS

Mr. M. Morris OA

Mr. R. Horne

Mr. J. Price MP

Mr. S. Lowe

Mr. G. Semken

Mr. A. Fairhall.

MEETINGS PHSI meets the first Thursday of each month - 7.30 pm. - at the Paterson Court House Museum (Recess December/January)

MEMBERSHIP FEES: Annual subscriptions due February each year.
Family \$5. Single \$3. Student \$1.

Guest Speaker

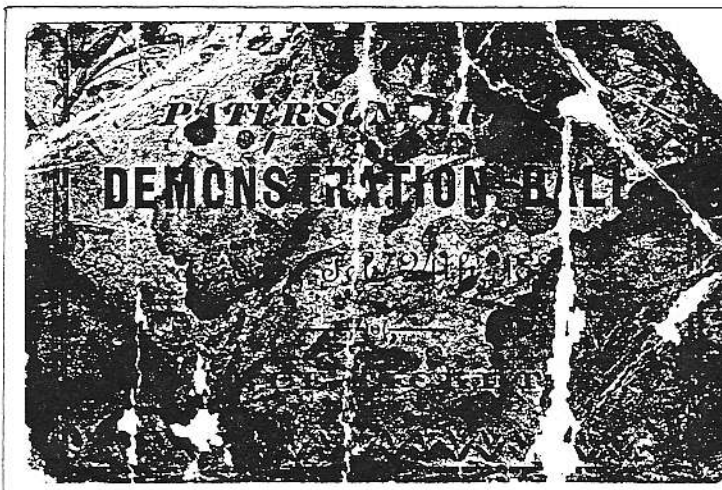
- ❖ (Additional to 2002 Programme) Meeting September 5 - Professor John Fryer of the University of Newcastle, a surveyor who has done extensive research on Indigenous historical items in Australia and overseas. Included in the evening will be an extensive slide programme.

Commonwealth Awards

- ❖ Congratulations to Val and Bill Anderson who received International Year of Volunteers Certificates of Recognition at the 2001 Commonwealth Awards for Senior Australians. Val insisted on accepting the award on behalf of all associated with the Paterson Museum and expressed her delight that Australian history in the Hunter had not been forgotten. (Bill's invitation to those present to visit the museum was well received by all)

Welcome to 2002.

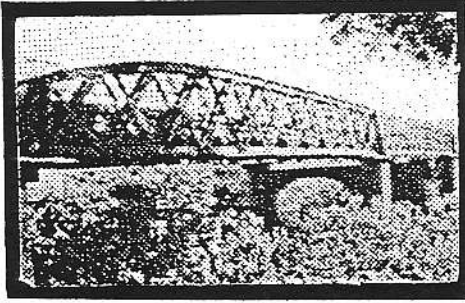
- ❖ We are already in business mode with a near-full complement at our first executive meeting (but where was Bill A.?), good ideas, enthusiasm and as usual the museum grounds looking very neat with the regular ground maintenance from Dungog Shire Council. Without hesitation, our regular stalwarts, Cameron Archer, Pauline Clements, Shirley Threlfo, Mary and Maurice Dunlop, Bill and Mabs Keppie, Pam Sivyver, Kathy Lyall, Phillip Leake, Jennifer Dum and Val and Bill Anderson have pledged another twelve months of Sunday museum duty.



PATERSON BRIDGE
DEMONSTRATION BALL
February 24, 1888

Source: Bert Hallett

PATERSON RIVER BRIDGE



How many times do we travel over the Paterson River Bridge without giving a thought to its age, construction or the unique place it holds in the history of the opening up of the area in the early days of the Colony's history.

In the earliest days of settlement the river could only be crossed by small row boats, or by small foot bridges built by landholders over the narrower reaches of the river and creeks on their own properties, or by driving horses, carts and cattle across a shallow part of the river. Later ferries or punts were used to carry a greater number of passengers. The Paterson River was crossed by a punt operated by the Meehan family for many years. The entrance to the punt was down the river bank on the Paterson side of the Moreton Bay Fig Tree which is such a landmark in the district today. This means of transport across the river existed for many years but one can well imagine the rumblings of protest there would have been coming from the residents of the district wanting to have a flood-free bridge built to span the river.

Up until the 1880's any bridges that were built would have been of timber and even after this time timber bridges were still being built. We see evidence of this in our own district, with the Woodville, Morpeth and Hinton Bridges well over one hundred years old, and all showing the wear and tear of many years of carrying traffic for which they were never designed.

At last the government acted and a notice appeared in the Maitland Mercury of 18th July, 1885 calling for Tenders for the erection of a bridge over the Paterson River. The Bridge was to be made of steel, and at first was to be imported wholly from overseas, but the Minister of Works at that time wanted it to be built in the Colony and offered a cash incentive to a builder to have the construction done in the Colony. This was the first bridge to be constructed to a design made in steel imported from England, and the contract was given to Messrs. D. and W. Robertson for the bridge to be made at their works in Blackwattle Bay, Sydney. The parts were then transported by the s.s. *Bowra*, *Summer Rose*, and *Zoebrough* and arrived in Paterson on 4th September, 1886 where further construction of the bridge took place. Stone for the base of the cylinder supports for the bridge was found 34 feet below the bed of the river and when in place these cylinders were filled with concrete. Stone for the north-west abutment was brought from the Tocal property, whilst that needed for the opposite bank was bought by ship from Cockatoo Island in Sydney.

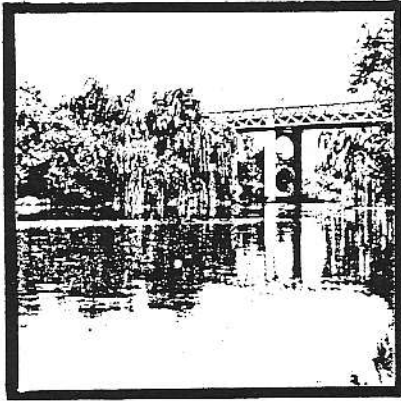
As work progressed there were many hold-ups to river traffic and the Maitland Mercury of 9th April, 1887 reported that the ships *Myall* and *Paterson* were unable to pass under the scaffolding - just one instance in the delays caused by the construction of the bridge.

The Paterson River Bridge was the first of a series designed by Mr. John Alexander McDonald, an assistant engineer with the roads and Bridges Department. Mr. McDonald had his new idea of bridge building patented in England, America and throughout the Colonies and between 1881 and 1893 eighteen bridges of the Iron Lattice Truss design were built throughout the state, thereby opening up huge new tracts of farming land and making transport between centres much easier for the settlers.

Of the eighteen bridges built, seventeen remain intact today. Apart from the Paterson Bridge, two can be found in the Hunter Valley. One is to be found at Aberdeen (the north-bound lane of Fitzgerald Bridge) and one at Redbournberry in the Singleton district and the others are to be found in many parts of the state. The eighteenth bridge was that built over Iron Cove in Sydney but this was dismantled and re-erected at Forbes in New South Wales, when the new Iron Cove Bridge was completed in 1956.

At the beginning of 1888 the bridge was complete with a cost to the Government of £9972. Materials for the project cost £4170 and the construction on the site £4302. (£31/7/0 per foot).

The structure was 'technically sophisticated' for its time and brings a sense of 'grace and elegance' which is as applicable today as when it was built. It is a three-span continuous bridge with a centre span of 36 m. in length and two side spans of 28 m. The overall length is 93 m., and the Bridge is 5.9 m. wide between kerbs.



The Bridge was Officially Opened on 24th February, 1888 by Mr. H.H. Brown, wife of the local Member of Parliament cutting the ribbon. Government officials present were Mr. H.H. Brown, M.L.A., the Hon. W. Clarke, Minister for Justice, and the Hon. C.J. Robertson, Post Master Gneral. The weather was not kind on this day and it was noted that the official party was drenched on their return to Maitland. The local celebrations took the form of a Ball held that night in the School of Arts, where the residents danced the night away.

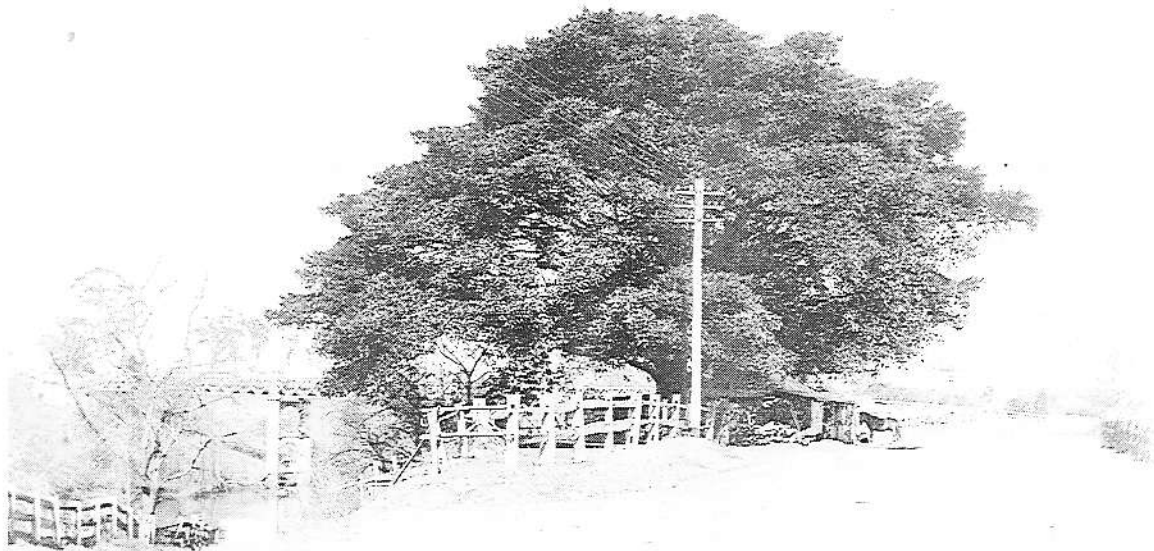
The Bridge is now 114 years old and is given a high historical significance by the National Trust Register as it was the first major bridge of its time built to new design, and it contributed greatly to the further development of this and other centres further afield.

(My interest in the history of our Bridge was aroused by a request from Cardno MBK Sydney, who were conducting a Heritage Study of R.T.A. Pre-1938 Metal Bridges throughout the State. Local information was supplied by our ever helpful local historian, Harry Boyle, OAM, thank you!!)

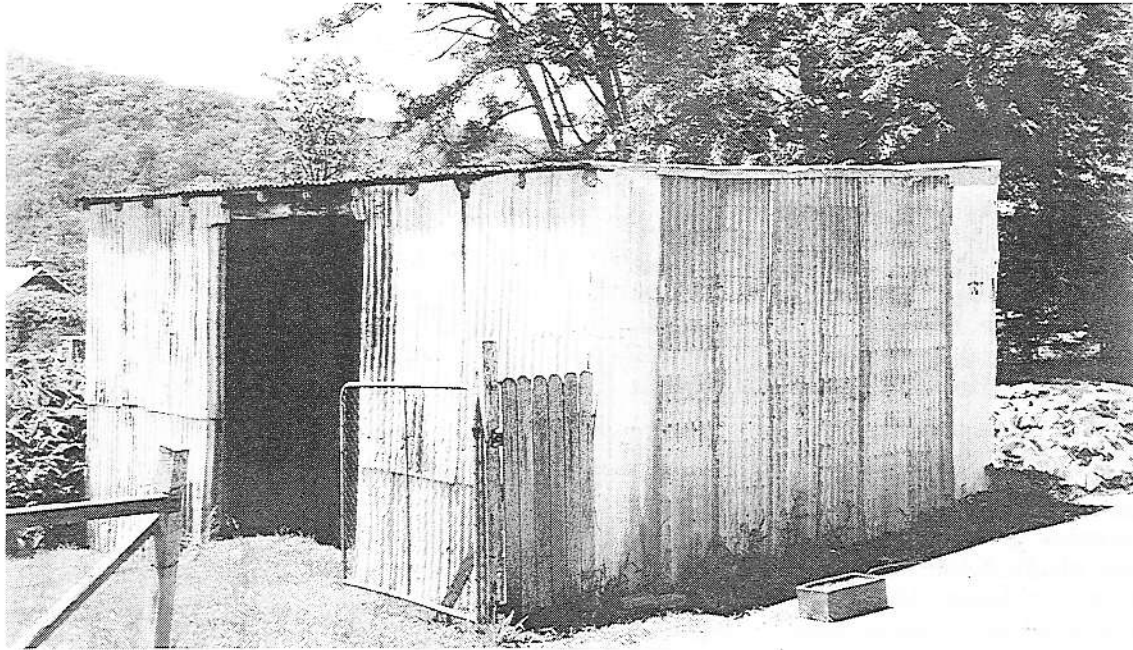
Pauline Clements.

Salome Keppie's Diary - Bill Keppie

1888 Celebrated the opening of Paterson Bridge Friday 24 Febury



PATERSON RIVER BRIDGE - Punt Entrance - Photo: Society's Files.



Paterson Fire Brigade Shed - Police Station Grounds

Photo taken by Bill Anderson prior to demolition in 1995. (Building demolished by police authorities due to safety precautions)

(Const. Steve Mackie - Maitland Police.)

PATERSON RIVER BRIDGE
Public Works - Col. Architects Branch
Roads & River Branch.
1884 - £6,000.00.
opened February 24, 1888

OPENING OF THE PATERSON BRIDGE.

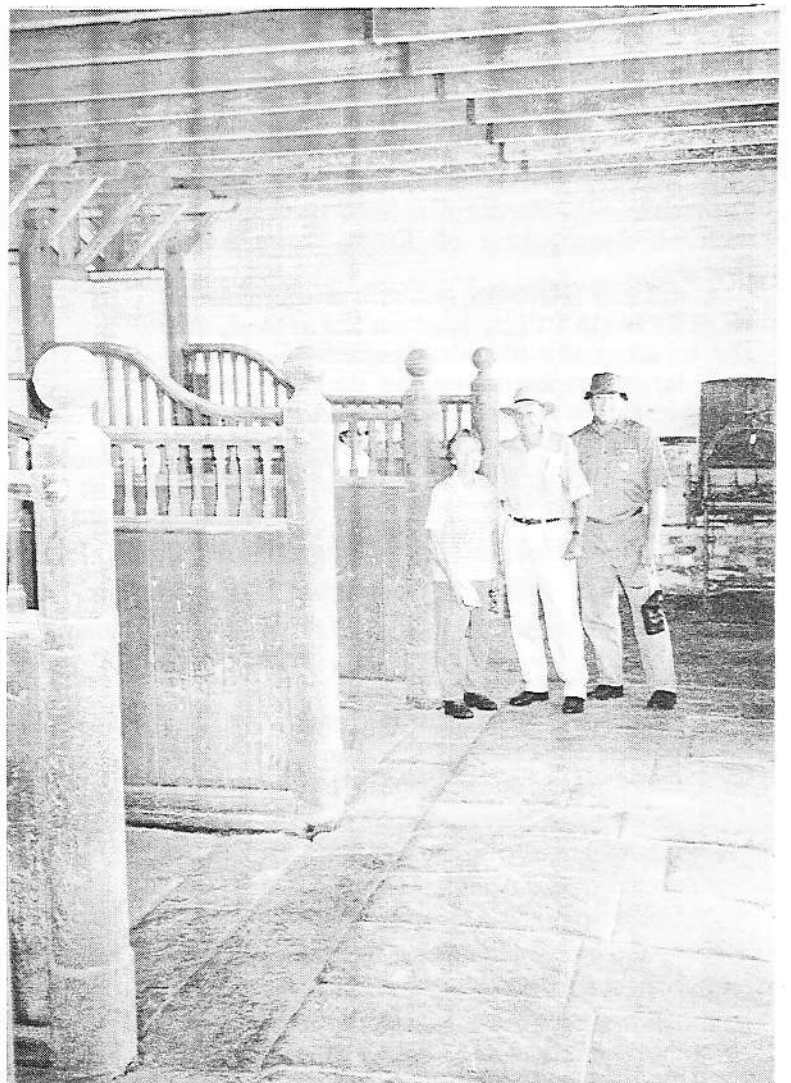
[BY TELEGRAPH.]
[FROM OUR OWN CORRESPONDENT.]

WEST MAITLAND, SATURDAY.

The ceremony of opening the Paterson Bridge was performed on Friday by Mrs. H. H. Brown, who named the new structure in the time-honoured fashion by breaking a bottle of champagne on the centre span. The Hon. W. Clarke, Minister of Justice, the Hon. C. J. Roberts, Postmaster-General, and Mrs. H. H. Brown, member for Durham, were present, besides a large gathering of local residents and visitors. The Ministers, on their arrival at West Maitland in the morning, were entertained at breakfast at Main's Hotel by the Mayor, Mr. John Gillies, and were afterwards driven in a drag to the Paterson, where they received an address of welcome, and after the ceremony were entertained at luncheon, under the presidency of Mr. Theophilus Cooper, J.P. The usual toasts were duly honoured. In returning home in the evening the Ministerial party were caught in a very heavy thunder-storm which fell about 7 o'clock, and they received a thorough drenching.

Maitland Mercury 27th February, 1888

Courtesy: Harry Boyle OAM



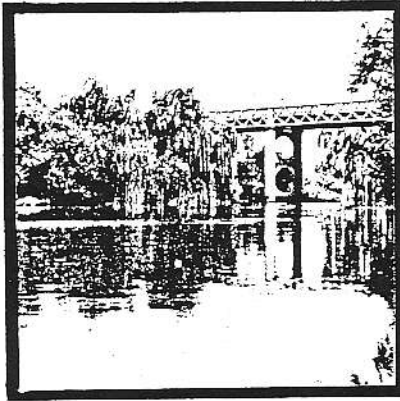
Rouse Hill Outing - March, 2001.

4 Mabs and Bill Keppie and Cameron Archer
in the stables.

Photo: Bill Anderson.

At the beginning of 1888 the bridge was complete with a cost to the Government of £9972. Materials for the project cost £4170 and the construction on the site £4302. (£31/7/0 per foot).

The structure was 'technically sophisticated' for its time and brings a sense of 'grace and elegance' which is as applicable today as when it was built. It is a three-span continuous bridge with a centre span of 36 m. in length and two side spans of 28 m. The overall length is 93 m., and the Bridge is 5.9 m. wide between kerbs.



The Bridge was Officially Opened on 24th February, 1888 by Mr. H.H. Brown, wife of the local Member of Parliament cutting the ribbon. Government officials present were Mr. H.H. Brown, M.L.A., the Hon. W. Clarke, Minister for Justice, and the Hon. C.J. Robertson, Post Master Gneral. The weather was not kind on this day and it was noted that the official party was drenched on their return to Maitland. The local celebrations took the form of a Ball held that night in the School of Arts, where the residents danced the night away.

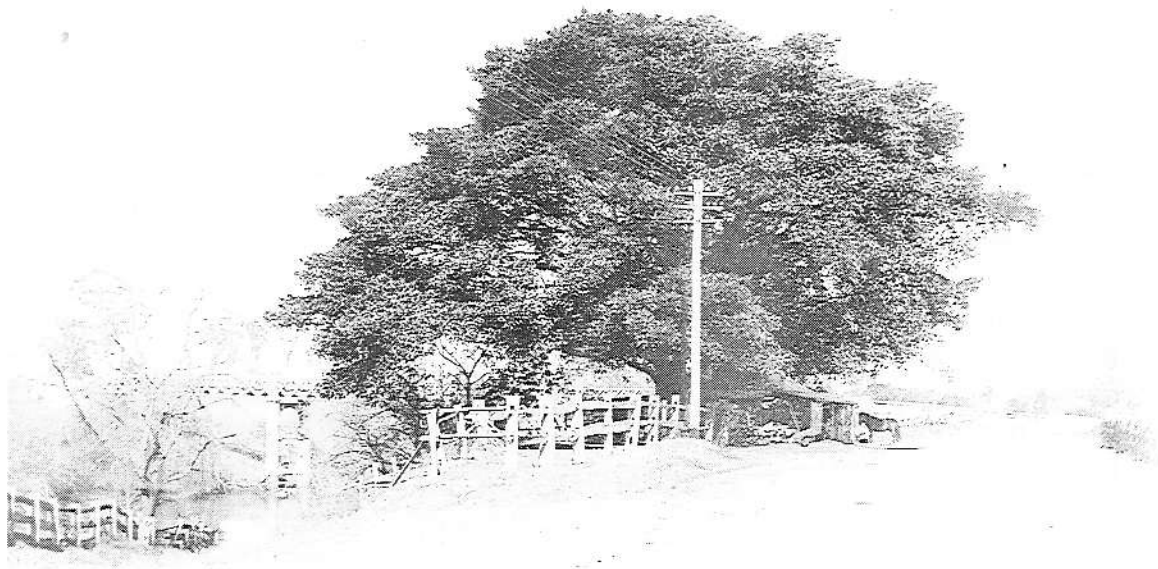
The Bridge is now 114 years old and is given a high historical significance by the National Trust Register as it was the first major bridge of its time built to new design, and it contributed greatly to the further development of this and other centres further afield.

(My interest in the history of our Bridge was aroused by a request from Cardno MBK Sydney, who were conducting a Heritage Study of R.T.A. Pre-1938 Metal Bridges throughout the State. Local information was supplied by our ever helpful local historian, Harry Boyle, OAM, thank you!!)

Pauline Clements.

Salome Keppie's Diary - Bill Keppie

1888 Celebrated the opening of Paterson Bridge Friday 24 Febury



PATERSON RIVER BRIDGE - Punt Entrance - Photo: Society's Files.

Tillimby Sale Notice

Maitland Mercury 15th March, 1854

Tillimby, &c.—Paterson's River.

TO BE SOLD, by Private Contract, the ESTATE OF "TILLIMBY,"

and other LANDS, the Property of J. H Boughton, Esq., adjoining the Town of Paterson, at the north thereof, and about 11 miles north of Maitland and Morpeth, having above four miles of River Frontage on the Paterson, part of which is tidal, so that vessels of burden can approach the Homestead, and the water is always fresh.

It is two miles in breadth from north to south, and extends back to Lamb's Valley, about eleven miles from east to west. The Estate contains about 6,000 acres of Freehold Land, and about 6,600 acres of Church Land and Pre-emptive Lease attached.

If not sold within a short time, a portion of the Alluvial Land will be divided into small Farms, of from 50 to 100 acres each, and sold by auction.

The Crops on this Farm have never been known to fail from blight; and formerly, when all the Maize Crop failed in other parts of the colony, a full crop was gathered from this Farm.

This Estate possesses an excellent

BRICK-BUILT DWELLING-HOUSE AND OFFICES,

with Stables, Coach-house, Smithy, &c., and Extensive and Fertile Gardens, well stocked with all descriptions of Fruit Trees in full bearing.

About 200 HORSES, and 500 or 600 Head of HORNED CATTLE, bred on the ground, may also be taken at a liberal valuation.

A large proportion of the purchase money may remain on security of the land.

Application to be made to the Proprietor, at Tillimby. 1165



Remains of Convict Built Servants Quarters - Tillimby
Photograph - Bill Anderson

Book Review - John Herring Boughton of Tillimby, Paterson.

R.A.H.S. "History" September 2001 - Number 69

State Roundup - Mari Metzke - Mary Kinsman

John Herring Boughton of Tillimby, Paterson, written by Dulcie Hartley and published by Paterson Historical Society was an outcome of that society's 2000 Heritage Lecture. It is very well-researched and well-documented and contains a bibliography and index and was part-funded by a Cultural Grant. The book is the story of Boughton from 1822, when he selected two land grants in the Paterson area, to his death in 1854. The book also reflects a history of the local area and its development in this period. Copies available from the publisher, c/- Paterson Post Office, Paterson, 2421. (ISBN 0 9585251 2 9)



SERVANTS QUARTERS
"TILLIMBY"
PATERSON - NSW

BUSINESS AND PROFESSIONAL DIRECTORY, 1935. - Country Section

Paterson - (132 miles north) - Harry Boyle OAM.

AUCTIONEERS

WILSON & KEPPIE

PHONE: 3. Also Stock & Station Agents. Stock Sales

Conducted at West Maitland each Monday.

BAKERS

Arthur, C.

BANKS

Commercial Banking Coy. of Sydney Ltd.

BOARDING HOUSES

Boyle, G.

Osborne, Mrs. J.

BOOTMAKERS

Pring J.

BUILDERS

Hall, V.

Maurer, C.

BUTCHERS

Humbles, W.

McGill, W.

CARRIERS

Duggin, D.

CONFECTIONERS

Miles, E.

Oxborrow, J.

Phillips, Mrs. A.

Williamson, Geo.

GROCERS

Cann, J. & F.W.

Park Stores (E. Miles, Prop.).

Phillip, Mrs. A.

Miles, E.

HAIRDRESSERS

Oxborrow, J.

HOTELS

Commercial.

Court House

PAINTERS

Hall, V.

Maurer, C.

REFRESHMENT ROOMS

Doyle, Darcy

Miles, E.

Oxborrow, J.

Patfield, S.

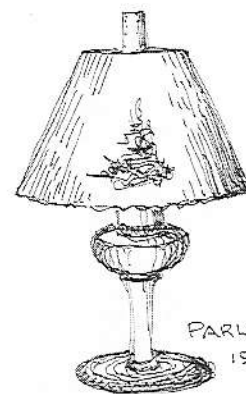
Sunnyside Tea Rooms,

Afternoon Teas, Light Refreshments.

TAXI SERVICES

Crouch, W.J.

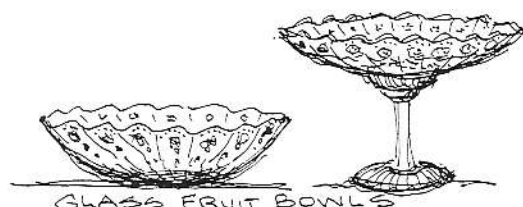
Duggin, D.



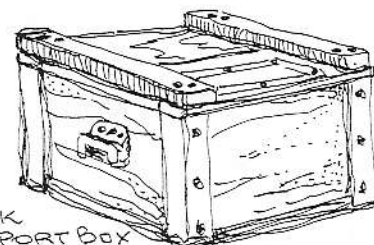
PARLOUR LAMP
1940-1950

Museum Accessions

- ◆ Keppie family photos - Ted Coyle - Keppie family - Paterson.
- ◆ Electric drill c1940's - Ralph Hamilton.
- ◆ Parliamentary Records 1824-1999 - John Price MP - Paterson.
- ◆ "Hard Work Won't Hurt You" - Barden & Pyle - by purchase.
- ◆ 1940's - 1950's Parlour Lamp - was purchased not long after WWII from "Brandts, George Street, Sydney" by donor's parents. Mrs. G. Clifton - Gresford (Handed to society secretary, Pauline by Mrs. Clifton's daughter, who said it was her mother's wish the lamp be placed in the Museum. Mrs. Clifton was 90 years of age when the lamp was donated in November, 2001.)
- ◆ Baby's Gown - Helen Dunlop - Paterson.
- ◆ Maitland Park - Horseshoe Bend - Hunter - by purchase.
- ◆ Vacy Telephone Photos etc. - Wendy Cannon - East Maitland.
- ◆ Allyn River (Halton) Orangery - Jack Sullivan - Newcastle.
- ◆ 1898 District Map - Denise Presland - Paterson.
- ◆ Railway Transport Box for Bank Cash - Mrs. J. Doust - Bolwarra - (See "Museum News" - Volume 7 #3 - November, 2000)
- ◆ Glass Fruit Bowls - (two fluted stands and two pearl glass bowls) - Lyn Dickson - Charlestown, NSW, in memory of her mother, Joan Jackson of Belmont, NSW. Mrs. Jackson was a descendant of Emily Kidd - d. 1962 who was a former housekeeper at Tocal Homestead.



GLASS FRUIT BOWLS



BANK
TRANSPORT BOX