



MUSEUM NEWS

THE JOURNAL OF
PATERSON HISTORICAL SOCIETY
INCORPORATED

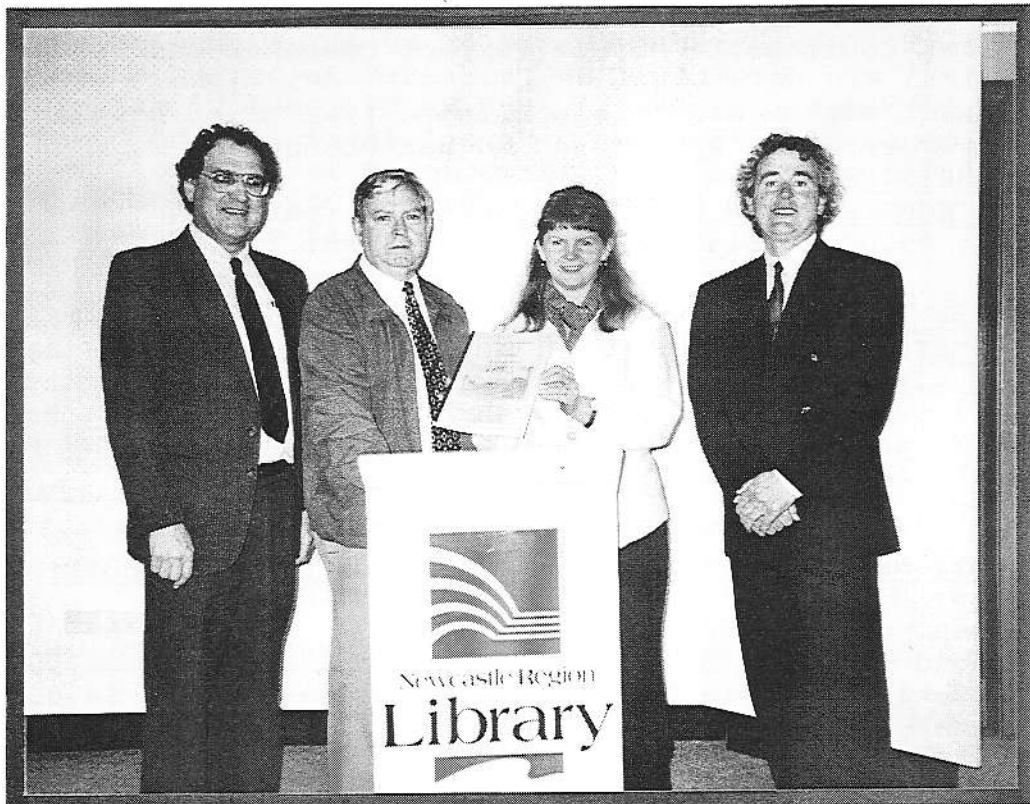


PHOTO - BILL ANDERSON

LOCAL HISTORY BOOK LAUNCH
GEORGE TOWNSHEND 1798-1872 and TREVALLYN
PATERSON RIVER
by
JACK SULLIVAN
NEWCASTLE REGION LIBRARY
LOVETT GALLERY
Friday August 8, 1997
CAMERON ARCHER-JACK SULLIVAN-CAROL EDMUNDS-ROD BLACKER

AUGUST 1997 - Volume 4 #4

ISSN - 1321 - 4438

PATERSON HISTORICAL SOCIETY INC.

Affiliated with the ROYAL AUSTRALIAN HISTORICAL SOCIETY

PRESIDENT: Cameron Archer

SECRETARY: Pauline Clements

ASS. SECRETARY: Geof. Keppie

TREASURER: Shirley Threlfo

VICE PRESIDENT: Maurice Dunlop

JOURNAL: Pauline Clements - Val Anderson

MUSEUM CURATOR: Val Anderson - Committee

PROJECT CO-ORDINATOR: Bill Anderson

RECORDER: Mabs Keppie

SURVEILLANCE OFFICER: Clive Corbett and Phil Leak

RESEARCH OFFICERS: P CLEMENTS S THRELFO M KEPPIE V ANDERSON

PATRONS:

MR M MORRIS OA

MR R BALDWIN

MR P BLACKMORE

MR A FAIRHALL

MR L KIDD

MR G SEMKIN

PATERSON COURT HOUSE MUSEUM is open regularly on SUNDAYS - from 1pm

MEETINGS: Paterson Historical Society Inc. meets the first Thursday of the month - 7.30pm at the Paterson Court House Museum (except December and January)

JOURNAL: "MUSEUM NEWS" is published five times a year - February April June August October

MEMBERSHIP FEES:

ANNUAL SUBSCRIPTION DUE: February each year

Family: \$5.00 Single: \$3.00 Student; \$1.00

On the Banner Launch Day, Harry Boyle launched a publication, "The Paterson Lodge Banner - Its Origins and History" by Pauline Clements - a fine 12p booklet - 5 photos and available @ \$5 (\$1.50 ph). Funds for the publication were made available by the Manchester Unity Friendly Society in NSW Hunter River District Lodge No 003.

PUBLICATIONS FOR SALE FROM THE MUSEUM OR BY MAIL ORDER:

| | |
|--|---------|
| June 1997 | |
| Settlement of Paterson - C Archer | \$8.00 |
| W M Arnold - H Boyle OAM | \$8.00 |
| Fred Bedwell - H Boyle OAM | \$4.00 |
| G B White - H Boyle OAM | \$4.00 |
| Syn History of Paterson River - H Boyle OAM | \$2.50 |
| - V Anderson | |
| Dor Mackellar/Paterson Valley Connection | \$7.00 |
| "My Country" - V Anderson | |
| St Paul's Church - P Clements | \$4.00 |
| John Tucker Park - P Clements | \$2.00 |
| St Paul's Cemetery Listing #1 - P Clements | \$30.00 |
| St Paul's Cemetery Listing #2 - P Clements | \$25.00 |
| Clements /Paterson Connection - P Clements | \$8.00 |
| Paterson Lodge Banner - P Clements | \$5.00 |
| Historic Paterson | .60 |
| Paterson Town Walk | .50 |
| Cards | .50 |
| Spoons | \$4.50 |
| Tea Towels | \$ 7.00 |
| Valley Echoes - K Ingle (Gresford Catholic Parish) | \$16.00 |
| Big Creek the Allyn to Hilldale - K Ingle | \$16.00 |
| Martins Creek School - K Ingle | \$12.00 |
| History Raymond Terrace - C Hunter | \$25.00 |
| Earthquakes/Hunter Valley - C Hunter | \$18.50 |
| Wades Cornflour - C Hunter | \$15.00 |
| George Townshend - J Sullivan | \$15.00 |
| Keppie Family - E Coyle | \$3.00 |
| Williams River - R Ford | \$29.95 |

THE DAY HISTORY CHANGED PATERSON.

The 14 August marks the eighty-sixth anniversary of the opening of the North Coast Railway Line between West Maitland and Dungog on 14/8/1911.

More than 110 years ago, a man and a small boy wandered along a peaceful bush track towards Oakhampton. The man remarked to his son, pointing to axe marks on the trees, that some day an iron horse would come snorting through this very track - he would not live to see it but his son would.

The speaker was Henry Fry, who for many years held the contract for taking Her Majesty's mails by coach from Maitland to Dungog and Gresford. After his death in 1894 his son Herbert took over the service until the long-awaited iron horse arrived.

The opening of the North Coast railway brought to a close Herbert Fry's coaching activities so he became a successful farmer on land which he had acquired at Paterson. He lived with his family in the comfortable family home, "Glen Ayr" (1900) near John Tucker Park and continued to be actively engaged in the triple occupations of dairy-farmer, orchardist and funeral director. When his large car was not available he would think nothing of riding a bicycle or a tractor between his farm properties.

Sadly, none of the coaches were preserved but dismantled and sold for use as rabbit carts on properties. The coaches were in much demand because of the tough leather springs and their overall durability on rough conditions.

VAL ANDERSON

(From reminiscences of the late Stan Fry with the writer)

(Our editor, Pauline Clements is on holidays - again!)

THE WEST MAITLAND TO DUNGOG BRANCH LINE (NSW): Phillip Leak

Construction of this branch which was to become the first section of the North Coast Line to Grafton was commenced in the early part of 1908 by the contractors Messrs Carson, Carey and Simpson, the tender price for the 33 miles was 288,234 pounds. There were two main bridges on the line, both being constructed by the Clyde Engineering Co for a total cost of about 35000 pounds. Both were of steel on concrete piers, the first over the Hunter River at Oakhampton consisted of three 157ft 6ins in steel truss spans and six 32 ft plate girder spans. The second bridge over the Paterson River at Paterson consisted of one 200 ft truss steel span, two 66 ft and seventeen 32 ft plate girder spans. Both bridges are still in use although there is currently a speed restriction on the Paterson Bridge.

A separate contract for a number of smaller bridges was let to Messrs Henry Vale and Sons, but no mention is made in the press report of the builder of the Webbers Creek Bridge near Paterson. The other major construction work was the 33 yards long Wallarobba Tunnel.

The single track fully ballasted line was laid with 80 lb silicon steel rails on wooden sleepers 2376 to the mile. The ruling grade is 1 in 80 in both directions.

On Friday 11/8/1911 the constructor's loco known as "The Dungog" departed from Dungog at about 10.00 pm with much whistle blowing signalling the completion of their contract.

The official opening was held on Monday 14/8/1911 with a special train timed to leave Newcastle at 8.30 am. Cheap tickets at 2d per mile first class return (minimum 2/-) and 1d per mile second class return (minimum 1/-) were available by special train from Newcastle, West Maitland and intermediate stations to stations on the Dungog Branch. The crowds were so great that the first train consisted of twelve carriages and a second train of five carriages had to be provided.

Ribbon cutting ceremonies were held at West Maitland and Dungog with the usual speeches from local and government dignitaries.

Regular services commenced on Tuesday 15/8/1911.

Horse drawn mail and passenger coaches had been operated by the Fry family between Maitland, Paterson, Dunogo, Vacy and Gresford districts for 40 years. Because they could not compete with the railway, the last coach from Maitland to Dungog operated on the 14 August 1911.

From 15 August Fry's coaches connected with trains at Paterson providing a service to Vacy, Gresford and Allynbrook which were not on the rail line.

| | | |
|------------------------------------|--------------------------------|-----------|
| The stations were: | Single fare from West Maitland | |
| | 1st class | 2nd class |
| West Maitland | | |
| (Changed to Maitland - 1/4/1949) | | |
| West Maitland Marshalling Yard | | |
| (Changed to Telarah - 15/4/1922) | | |
| Oakhampton | 4d | 3d |
| Dunmore | 6d | 5d |
| (Changed to Mindaribba - 1/4/1912) | | |
| Paterson | 1/- | 8d |
| Martin's Creek | 1/3 | 10d |
| Hilldale | 1/11 | 1/3 |
| Wallarobba | 2/5 | 1/7 |
| Wiragulla | 2/9 | 1/10 |
| Dungog | 3/5 | 2/3 |

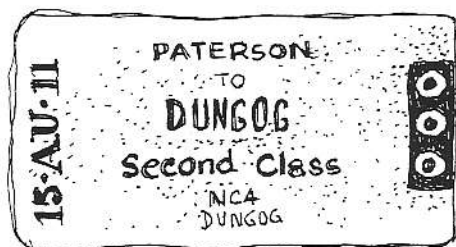
Return tickets were only available as far as Paterson, the limit of the Newcastle suburban area.

REFERENCES:

- The Maitland Daily Mercury
- PTC of NSW Station Names - 3rd Edition 2/1979



COLOUR: YELLOW



COLOUR: DARK GREEN

JA
97

The first two tickets issued at Paterson on 15/8/1911 were sold to Mr H A Fry of Fry's Coach Company. Copying of the tickets was kindly made available by Mrs Barbara (Fry) Fraser, Vacy.

George Townshend (1798-1872) and *Trevallyn, Paterson River*, by Jack Sullivan, Paterson Historical Society, 1997.

Jack Sullivan, well-known for expertise with his camera lens, has now focused his research lens on the life and times of several nineteenth century families of the upper Paterson and Allyn River Valleys and in particular George Townshend of *Trevallyn*.

Jack has expanded the informative research paper that he presented to the Paterson Historical Society in Heritage Week 1996, into a comprehensive monograph now published by the Society. His work melds an enlightening genealogical approach to George Townshend with a complementary local history study of the influence of *Trevallyn* and its neighbouring estates.

It is surprising to learn that *Trevallyn House*, built before 1840 and demolished in 1950, was almost an architectural duplicate of *Tocal*, a homestead now considered a heritage jewel. Sullivan's narrative, supported by rare old photographs, makes the reader regret deeply the loss of this handsome building once set in a picturesque landscape equal in beauty to any in the region.

Townshend himself epitomises the pioneering generation of land managers who brought unfamiliar forest into productivity and, by willingness to contribute to community affairs, helped shape the progress of nineteenth century village and rural life.

No one reading this monograph can fail to be astonished at the productivity of *Trevallyn's* orangeries, the output of Townshend's fruit processing factory, and the extent of his venture into the nursery business, producing orchard stock on a large scale.

Townshend and his family struggled with the partition of living between the new world and the old. In Townshend's case, the old world may have won. Although his last years were spent at *Trevallyn*, his personal disillusionment was intense, his fate determined by a changing society that he was no longer able to influence.

Without the dedication of researchers such as Jack Sullivan, the contribution of George Townshend, a pioneering land holder who has no living descendants in Australia, would remain obscure and the origin of some Welsh place names in the Paterson Valley would remain a mystery.

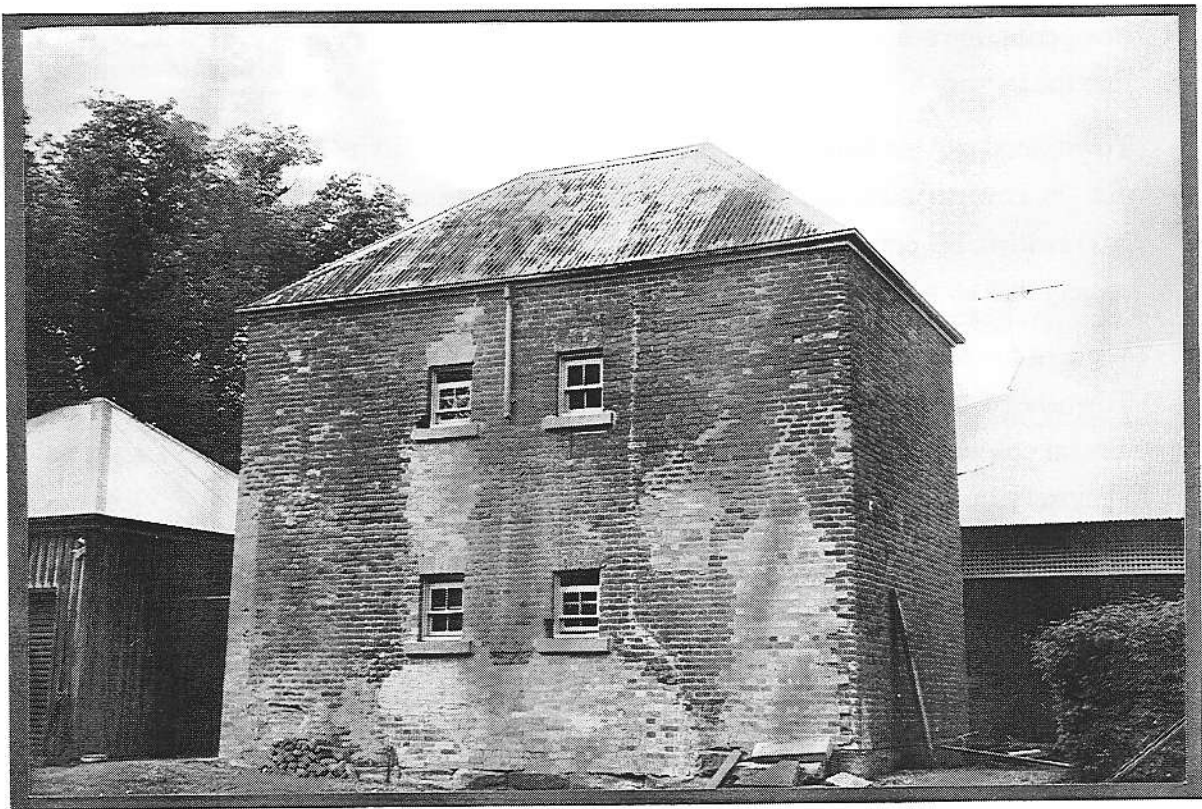
Reviewed by Cynthia Hunter

GEORGE TOWNSHEND BOOK LAUNCH: ANDY BURG

Approximately forty family, friends and colleagues attended the book launch of Jack Sullivan's "George Townshend 1798-1872 and *Trevallyn Paterson River*" at the Lovett Gallery, Newcastle Region Library at 11am on 8 August 1997. Full credit to Carol Edmonds and the Local History staff for the excellent catering and assistance given to our society prior to and on the day. President Cameron Archer launched this fine publication and on the day 15 books were sold (special thanks to Gail from Local History). Continuing sales of this publication indicates once again that local history, well written and well researched is in demand.



The Society's social outing to Bob and Paula Cameron's historic "Bolwarra House" - 12 April this year. Paula Cameron -Val Anderson-Bill Keppie-Harry Boyle-Bob Cameron-Cynthia Hunter-Boris Sokolf-Shirley Threlfo-Helen Masson-Jack Sullivan-Mabs Keppie-Sue Sokolof.



Former living quarters and possible store (thought to be convict built) at "Bolwarra House" in the process of restoration by Bob and Paula.