



THE JOURNAL OF  
PATERSON HISTORICAL SOCIETY  
INCORPORATED  
**MUSEUM NEWS**



"ANNANDALE" - 1839  
PATERSON - NSW

Val Anderson  
1995

JUNE 1995 - VOLUME 2 #3

ISSN - 1321 - 4438

PATERSON HISTORICAL SOCIETY INC

Affiliated with the ROYAL AUSTRALIAN HISTORICAL SOCIETY

PRESIDENT: Cameron Archer

SECRETARY: Pauline Clements

ASS SECRETARY: Geof Keppie

TREASURER: Shirley Threlfo

VICE PRESIDENT: Maurice Dunlop

JOURNAL: Pauline Clements - Val Anderson

MUSEUM CURATOR: COMMITTEE

PROJECT CO-ORDINATOR: Bill Anderson

RECORDER: Mabs Keppie

SURVEILLANCE OFFICER: Clive Corbett

RESEARCH OFFICERS: P Clements S Threlfo M Keppie V Anderson

PATRONS:

Mr M Morris OA

Mr R Horne

Mr P Blackmore

Mr A Fairhall

Mr L Kidd

Mr G semkin

PATERSON COURT HOUSE MUSEUM is open Sundays from 1pm

MEETINGS: PATERSON HISTORICAL SOCIETY INC meets the first Thursday of the month - 7.30pm at the Paterson Court House Museum (except December and January)

JOURNAL: "MUSEUM NEWS" is published five times a year - February April June August October

MEMBERSHIP FEES:

ANNUAL SUBSCRIPTION DUE - FEBRUARY each year

Family: \$5.00 Single: \$3.00 Student: \$1.00

LOCAL HISTORY PUBLICATIONS: List available from Secretary

ALL CORRESPONDENCE SHOULD BE ADDRESSED TO: The Secretary  
PATERSON POST OFFICE  
PATERSON NSW 2421

COMING EVENTS:

JULY 6 - MEETING-GUEST SPEAKER - VAL ANDERSON  
THE PATERSON COURT HOUSE

15 - OUTING - "MERTON", DENMAN - "StHELIER", MUSWELLBROOK

PLEASE NOTE - CHANGE OF DATE FOR OUTING

AUGUST 3 - MEETING - GENERAL BUSINESS

5 - WORKING BEE AT MUSEUM - All Welcome!

"THE LIBRARY"

Full marks to member, Clive Corbett for his endeavours to retain the Paterson Branch of the Dungog Shire Library which is situated in the former Magistrate's Chamber at the Paterson Court House Museum. Much as we would like to have the room for use as a Reading Room, we wish Clive and his new recruit, Lyn Kidd (wife of our Patron, Lindsay) every success.



L to R - BORIS SOKOLOFF  
PHIL LEAK  
CLIVE CORBETT  
BILL KEPPIE  
VAL ANDERSON  
JUNE MAYNE  
JOAN LATTER  
JACK SULLIVAN  
CYNTHIA HUNTER  
MABS KEPPIE  
SHIRLEY THRELFO  
CEC MASSON  
HARRY BOYLE  
MAC MAYNE  
SUE SOKOLOFF

PARTY LOOKING ON TO  
PATERSON RIVER.  
"OLDBANKS" (PADDOCK  
AT REAR.)

SOCIETY MEMBERS at "OLD BANKS" - 13 5 1995

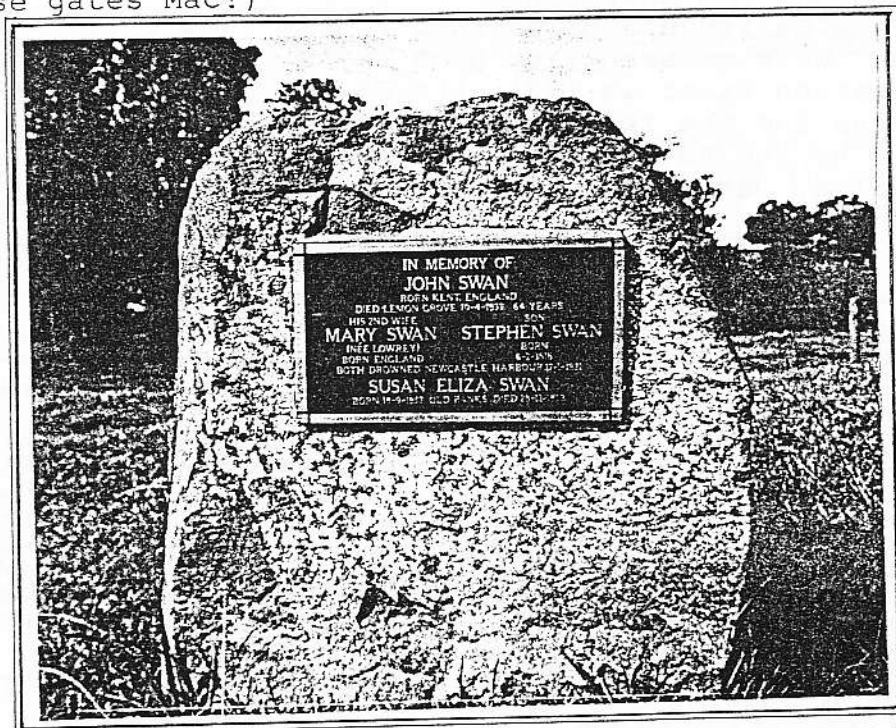
"LEMON GROVE" - "TOCAL" SOCIETY OUTING - 13 5 1995; VAL ANDERSON

Our long-overdue visit to "Lemon Grove" in the morning and on to "Tocal" after lunch was both most enjoyable and particularly interesting historically. John Swan, who settled on "Lemon Grove" has been overlooked as a pioneer of Paterson Plains. Our special thanks to present owner Joan Latter for her charm and generosity in allowing us to view and appreciate the restoration work she and her late husband, Lloyd had done at the homestead on "Lemon Grove" built in 1890. We then walked to the "Old Banks" Settlement site next to "Lemon Grove". Officially converted to a Government Reserve in 1826 the area had previously been the camp for the convict cedar cutters.

(John Swan was sent to the colony as a convict in 1804. He was permitted by Gov Macquarie to settle on the Paterson River in late 1811 adjacent to "Old Banks". The August edition of "Museum News" will feature a summary of research on the Swan Family done by Shirley Coote of Gunnedah NSW).

On to "Tocal" where our first call was the convict quarry - it was at this quarry that the stone for "Tocal" Homestead and its out-buildings was quarried by convicts. Stone from this quarry was also used in the 1858 Paterson Court House. We then went on to Line Paddock, a short distance from the quarry - this was the Tocal vineyard during the 1820's and driving across the paddock the vineyard ridges could be felt. How fortunate we are at Paterson Historical Society to have Cameron Archer as our President and how fortunate is Tocal to have Cameron as Principal - his understanding and appreciation of the district's history and heritage is such an asset. We then moved onto view the foundations of the old bridge on the Paterson Road which crossed Webbers Creek behind "Tocal" and other sites new to us. Thank you Joan and Cameron.

(Could it be said that really the "Tocal" visit 'hinged' on Mac Mayne's participation? - thanks for opening and closing all of those gates Mac!)



MEMORIAL STONE at "LEMON GROVE": IN MEMORY OF - JOHN SWAN - BORN KENT, ENGLAND - DIED LEMON GROVE 10 4 1833 64 YEARS - HIS SECOND WIFE MARY SWAN (NEE LOWREY) BORN ENGLAND - SON STEPHEN SWAN BORN 6 2 1818 - BOTH DROWNED NEWCASTLE HARBOUR 17 1 1821 SUSAN ELIZA SWAN - BORN 18 9 1857 - OLD BANKS - DIED 28 12 1858 (Daughter - RICHARD & MARIUDA SWAN)

SALOME KEPPIE'S DIARY - EXTRACTS - MABS KEPPIE

1867 - Mr Nell died on Thurs Sept 26 1867  
1867 - BOXING DAY - the races were at Tinklers  
1868 - Susan Brooker married T James - Jan 6th  
1868 - George Brooker opened Gresford Public House - 27th Feb  
1868 - John Brooker married Catherine Nell - July 1868  
1869 - Mary King left Brookers for Sydney 8th March 1869  
1869 - Mr Brooker had races in his paddock Wed 10th March 1869

MAITLAND MERCURY EXTRACT - CYNTHIA HUNTER  
MAITLAND MERCURY 1 AUGUST 1849 - PATERSON NEWS  
TOTAL BRIDGE:

The bridge across Tocal Creek, on the road leading from Paterson to Maitland, is now nearly completed, the planking being nearly half done. The frame work is composed of substantial squared ironbark timber, and is put together in a most durable and workmanlike manner. The structure reflects great credit upon the spirited contractor, Mr C D Haylock, who has spared no expense to fulfil his contract in every particular. Considering the many difficulties and delays Mr Haylock has had to contend with, such as obtaining proper timber and workmen, the bridge has been brought to its present forward state in a short time, and I am only sorry to state that Mr Haylock will be rather out of pocket by the contract. (Our correspondent's report of the excellent and workmanlike manner in which the bridge has been erected is fully borne out by the opinions we have heard expressed by many parties who have inspected it - Ed MM)

Tenders Called re Bridge over Tocal Creek - 8 12 1847 - CH  
Official Opening - MM - 19 9 1849 - CH

CURATOR'S CORNER: VAL ANDERSON

Following Jack Sullivan's MM extract in the last edition of "Museum News" with reference to Stan Fry's rescue of a young man from the Paterson River in 1921, the Society has been given the bronze medal, letters and the framed Certificate of Merit presented to Stan in 1921 by the Royal Shipwreck Relief and Humane Society of New South Wales. Our appreciation to Stan's daughter Barbara Fraser.

MAITLAND MERCURY EXTRACTS: HARRY BOYLE

MM Tues. 16 1 1866

**SCOTCH CHURCH.**—On Wednesday a meeting of the committee of management of our Presbyterian church was held at the church, the Rev. Mr. Stirton in the chair. The first business transacted was the opening the leaders for the erection of a vestry to the church, and the tender of Mr. Samuel Patfield was accepted, the amount being £47 10s. The committee then considered a proposal for the purchase of Annaudale cottage as a manse for the Presbyterian minister. After considerable discussion it was unanimously decided to purchase those premises, sufficient funds being in hand for that purpose, having been realized at a bazaar held here some three or four years ago for the purpose of building a manse. The amount was then not considered sufficient, and it has since been lying and accumulating at interest in the Bank of New South Wales. Arrangements were then made as to the transfer of the conveyance of the premises, other business of a trivial nature transacted, and the committee adjourned.

MM 20 3 1866

**TO LET,** in the town of Paterson, a HOUSE, together with cottage, coach-house, stable, garden, and vineyard, the residence of the late Major Johnstone. The house contains nine rooms and cellar, the cottage two rooms, the garden seventy orange trees and other choice fruit trees, and small vineyard, all in full bearing. The above would be a suitable residence for a gentleman or an industrious gardener, the fruit having realized a considerable sum annually. For particulars, apply to the Rev. T. STIRTON, Mr. H. CARR, or W. CORNER.  
Paterson, 21st March, 1866. 1851



1995 - and the months of May to August - in particular, mark Special Anniversaries, and many Memorial Services have already been held to mark the 50th Year since Peace was declared, ending the second World War which affected so many Nations....

We remember all who made the supreme sacrifice for their country, and those who still carry the memories of those years of conflict.

\*\* \*\* \*

APOLOGY.. Two mistakes were made in the Article on the "Royal Oak Inn" which appeared in last month's "NEWS", and need to be corrected. Firstly, it was said that Miss Neva McGill was the Grand-daughter of Mr. William John McGill, she was, of course, his daughter. The second error was in attributing the closure of the Butchering business to Mr. Ross McGill. The Butchery Business was sold in early 1970's to Mr. Jack Daniels who continued to operate the shop for some years before he closed the business. My Apologies to Mr. Ross McGill and his family.

\*\* \*\* \*

"ANNANDALE" It is pleasing to be able to report that life is returning again to the well-known house in King Street, Paterson. The house and ground have long been neglected but now that new owners are in the process of taking over, work has begun to clear the grounds of the trees and undergrowth which had screened the house from the road for many years, The house is standing clear and proud again.

The gentleman who built "Annandale" was Major Edward Johnstone who was the Police Magistrate for the Paterson District from 1836 until he died in 1850.

Edward Johnstone was born in 1797 at Annandale, Dumfriesshire, Scotland. At the age of twenty-three he was appointed a lieutenant in the local Militia, and that same year, 1810 he obtained a commission as an ensign in the 48th Regiment of Foot, and shortly afterwards both he and his brother were on active service in the Peninsular War, where Edward was severely wounded on two occasions. In June 1812 Edward was promoted to Lieutenant. He transferred to the 50th Regiment of Foot and by 1825 was promoted to Captain.

On 16th February, 1834 Captain Johnstone's life underwent a change for on that day he sailed from Dublin on the barque "James Liang" in charge of a detachment of the 50th Regiment of Foot as guards for 201 convicts being sent to the Penal Colony of New South Wales. After 133 days at sea the ship arrived in Sydney on 29th June, 1834. In August of 1834, Captain Johnstone commanded a company of the Regiment sent to New Zealand to rescue a woman, two children and nine seamen who had been captured by the natives. By the end of October the group returned after the successful rescue of the group, and the report of the mission was published in the N.S.W. Government Gazette.

In 1827 Edward Johnstone had married Miss Anne Rae in his native Scotland and when he left for the Colony of N.S.W. there had been four children born to the marriage. Mrs. Johnstone and the children arrived in Sydney on board the "Siren" on 11th January, 1836.

In June of 1838 Edward was promoted to Brevet Major and it was shortly afterwards that he retired from the Army.

Whilst still an Officer of the Colony, Edward Johnston had been appointed a Magistrate of the Territory, and later as Police Magistrate for the District of Paterson, where he commenced duties on 1st February, 1836 at the Salary of 250 pounds per annum. He was to hold this position for the next fourteen years, and become a well-respected member of the community. Upon his death on 29th January, 1850 the "Maitland Mercury" reported that all business ceased in the town as a mark of respect, and many residents followed his cortege to East Maitland where he was buried in the Presbyterian Cemetery.

A NEW HOME FOR THE JOHNSTON FAMILY.. In 1839 Major Johnston built a new home for his wife and family and they enjoyed many years of gracious living in the spacious house overlooking the river and land gradually being cleared for farming.

In the "Maitland Mercury" of July 29th, 1854, four years after the major's death the house known as "Annandale" was advertised for sale, and described as a "substantial stone house, containing seven rooms, pantry, kitchen, scullery and cellar. Also a two-stall stable and servants room together with a detached stone cottage of two rooms... grounds comprised of about one and half acres of Orchard and vineyard which contain a choice variety of orange, lemon, apple, peach, plum, pear, nectarine apricot and cherry trees, as well as some of the rarest kinds of vines, enclosed with a substantial 6 foot paling fence recently erected."

The house, set on the banks of the Paterson River faces the north and steps from the front verandah lead down to the river where a boat would be the most likely form of transport at that time.

The property has had many owners since those far off days, and it is believed that the second storey was added to the house in the early part of this century. Modern conveniences have been added to the interior of the house, but the outside still presents to the public a house with a gracious air and brings thoughts of days that used to be.

#### ACKNOWLEDGEMENTS....

Details on the life of Major Johnston from Mr. L. O'Neill, Wamberal.. a descendant of Major Johnston.

Details of Sale Notice of "Annandale" 1854, supplied by Mr. Jack J. Sullivan, Merewether, "Maitland Mercury" Advertisement.

P.M. CLEMENTS,  
EDITOR

---

JACK SULLIVAN has come to the rescue again! A request from Christine Bramble, Education Officer at NEWCASTLE REGION MUSEUM for information on nurses from Paterson active in WW1 drew a blank. Jack however was quick to point out, and supply details of Sister Amy CANN of ELMSHALL, VACY who had a distinguished wartime career. Sister CANN'S name heads one of the honor rolls on the Paterson War Memorial in Paterson Park.